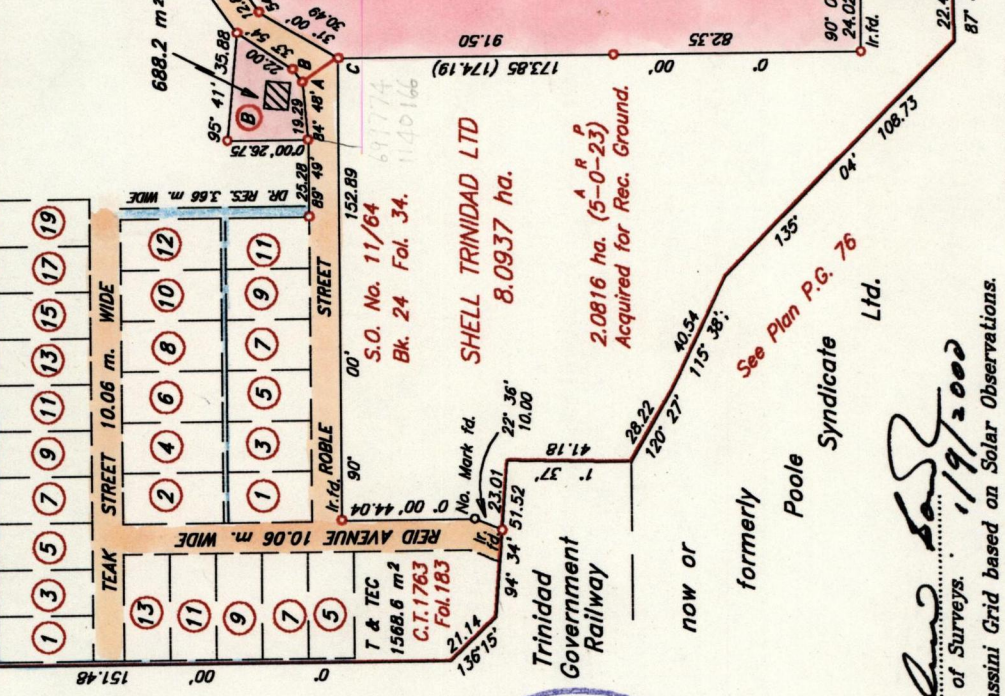


Ward of Charuma
County of Nariva
Cadastral Sheet H.2.C. 55B
3/d & 4/c

R.P.O. Vol. 118
C.T. Vol. 1667
Vol. 4446
Fol. 511
Fol. 205
fol. 217

Process LS# 66161

A - C 145' 32" 14.33
A - B 53' 05" 5.31



Plan : PE 86
: CN 79

NOS.	AREAS	NAMES	CT. Vol.	Fol.
1	483.1 m ²	Edward Reid	1819	289
3	483.1 m ²	Edward Reid	1819	289
5	483.1 m ²	Nathaniel Lincoln	1819	297
7	483.1 m ²	Johnson Hypolite	1819	305
9	483.1 m ²	Joseph Bazzey	1819	313
11	483.1 m ²	George Samuel	1819	321
13	483.1 m ²	Rufus Edwards	1819	329
15	483.1 m ²	Isaac Roberts	1819	337
17	483.1 m ²	Carlton Jackie	1819	345
19	483.1 m ²			
2	557.0 m ²	Roy Bowen	1819	353
4	557.0 m ²	Ernest Hector	1819	361
6	557.0 m ²	Donald Peters	1819	367A
8	557.0 m ²	Stephen Charles	1819	375
10	557.0 m ²	Louise Charles	1819	383
12	557.0 m ²			
13	534.2 m ²	Alexander Gittens	1819	231
11	534.2 m ²	Joseph George	1819	223
9	534.2 m ²	Wilby Quashie	1819	215
7	534.2 m ²	Ernest Lewis	1819	207
5	534.2 m ²	Nathaniel Small	1819	199
1	465.0 m ²	James Warrell	1819	239
3	465.0 m ²	William Forrester	1819	247
5	465.0 m ²	Alexander Challenger	1819	255
7	465.0 m ²	Augustus Rodriguez	1819	279
9	465.0 m ²	Emmanuel Benjamin	1819	271
11	465.0 m ²	Raymond Hernandez	1819	263

SCALE 1:2500

Distances are in metres
o Denotes Iron put, except otherwise stated.



Approved
Director of Surveys
1/19/2002

Bearings are Cassini Grid based on Solar Observations.
PLAN of 2 Parcels of land coloured pink in the Ward of Charuma
Containing together two point nine three three two nine hectares.
Surveyed by me, with due authority, in February 1998.
In accordance with rule 25(1) of the Land Surveyors' Regulations 1998,
I certify that this plan is correct.

Checked by: 01/02/01-05
Entered: 55B/10 Land Surveyor, Printed and Tabaga 26th July 1998.
10/02

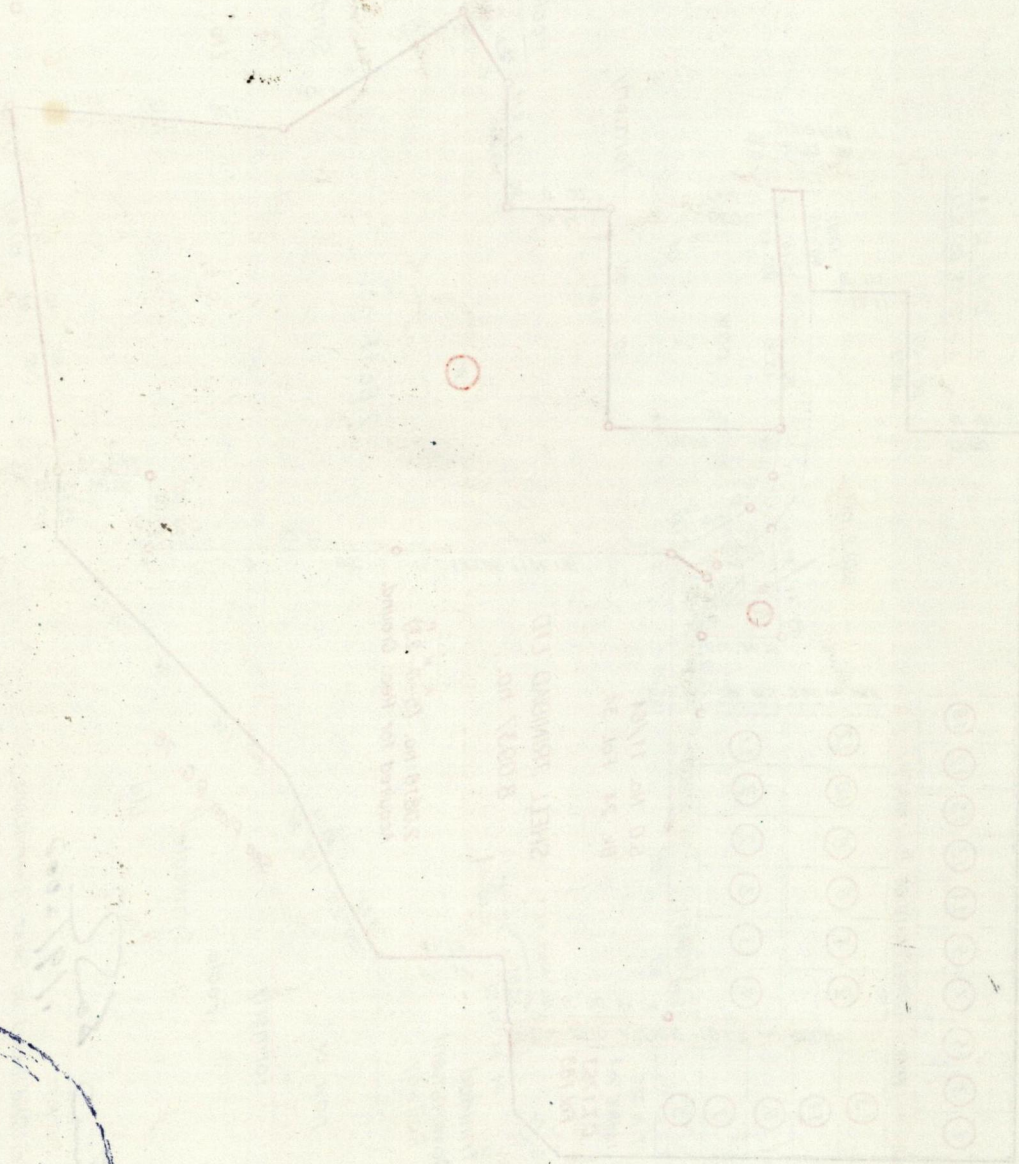
G N

Cassini

Original plan P.E.86

lot A

lot B Vol. 4481 Fol. 389 Rajkumar & Debra Balkisson



28 JUN 2000
Lands and
Surveys
Division

1249/194