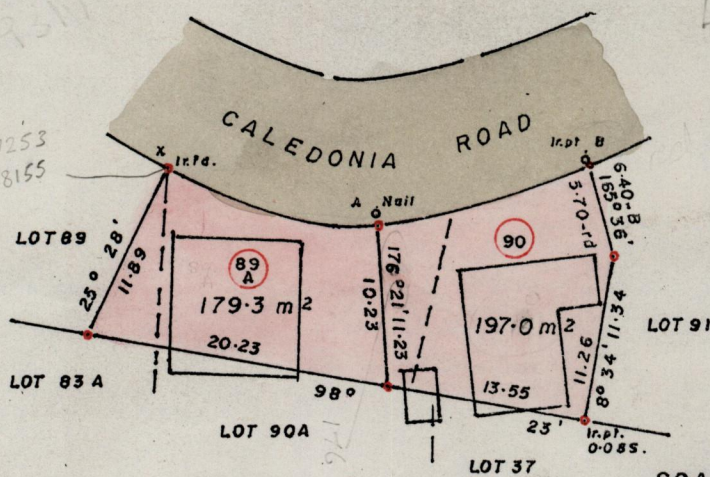
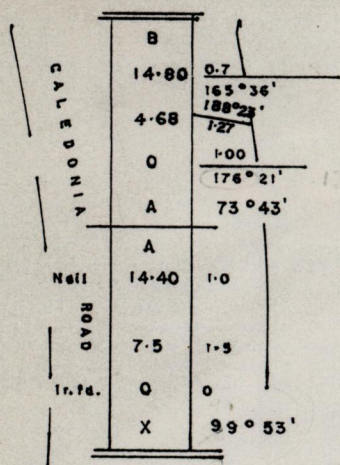


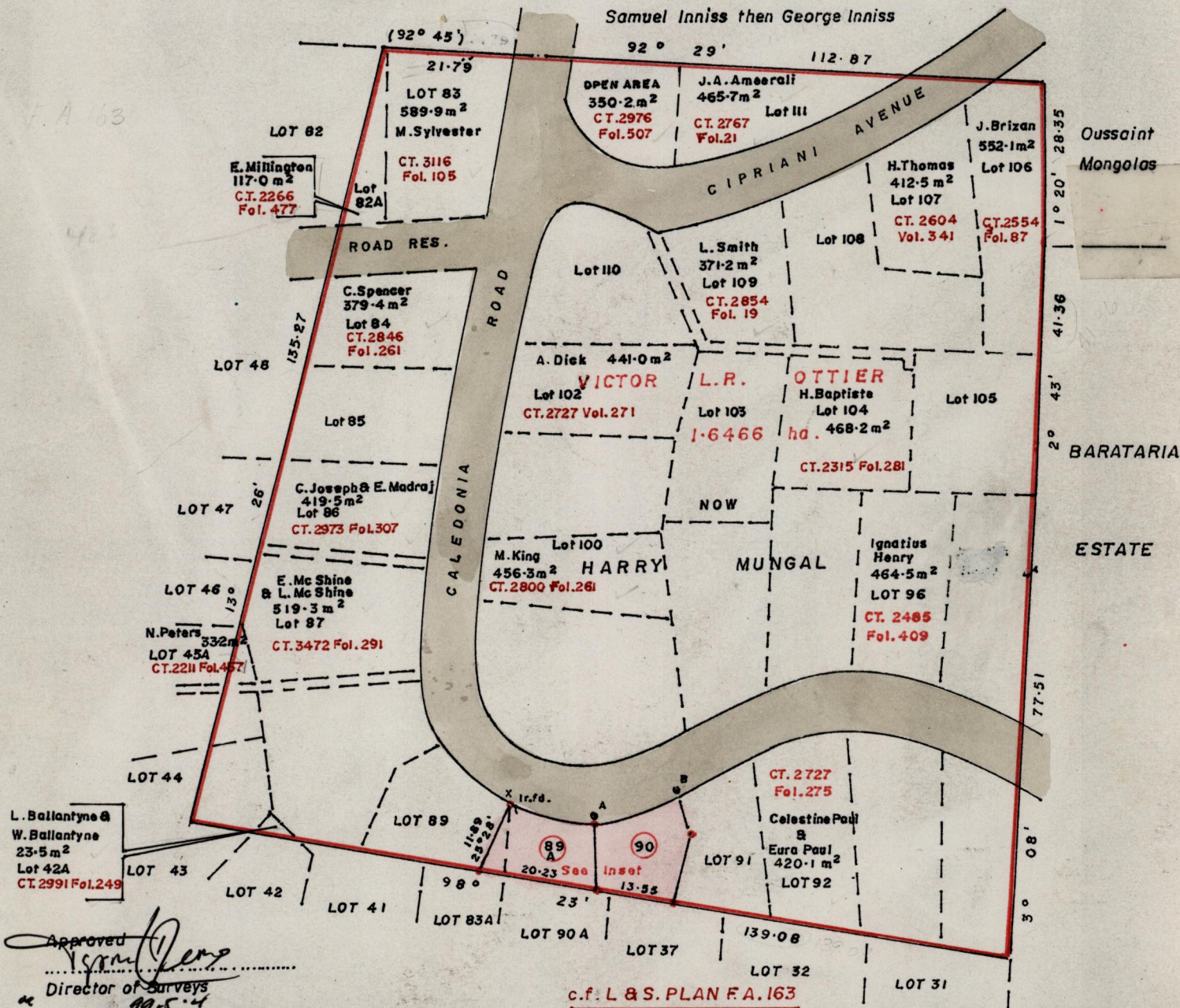
Process Lot# 65911



SCALE: 1/500
Distances are in metres

Edward Inniss

Samuel Inniss then George Inniss



SCALE: 1/1000
Distances are in metres

Approved
Director of Surveys
19.5.92

Iron put at each corner except otherwise indicated
To obtain compass bearings subtract 1 minute

Plan of 2 parcels of land coloured pink in the Ward of St. Anns
Containing together three hundred and seventy six point three square metres
Surveyed by me, with due authority in July 1992

I certify that I have complied with Rule 76, under Section 14(2)(d) of the Land Surveyors' Ordinance 1952, and that this plan is correct.

Checked by [Signature]

Entered... 238... 8/03...
LAND SURVEY CONSULTANTS LTD
DERE STREET
PORT-OF-SPAIN
62-53280

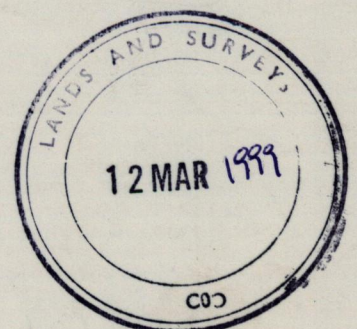
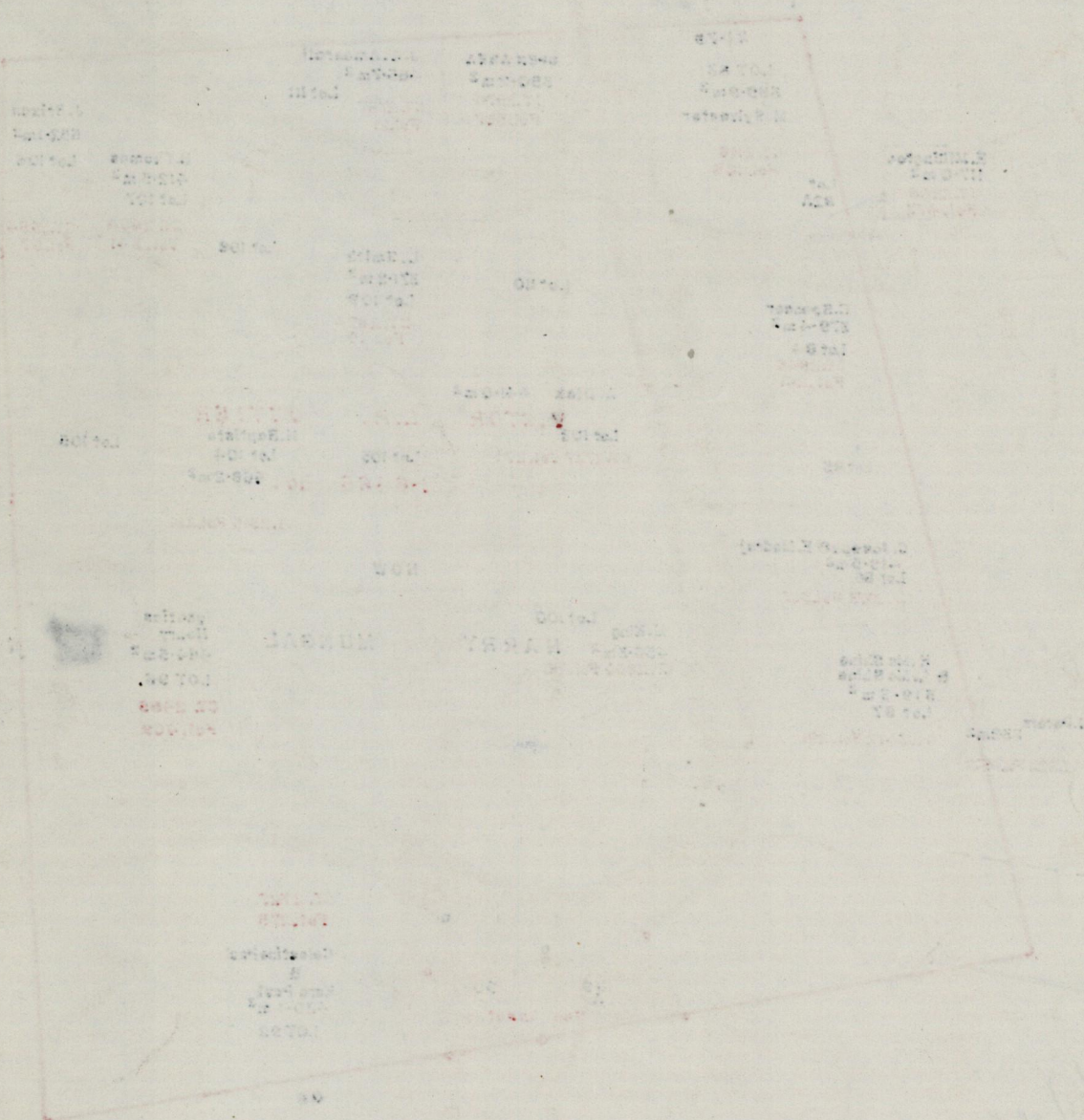
[Signature]

Land Surveyor, Trinidad & Tobago 3rd December 1992

Original Plan F.A. 163

Lot 89A

Lot 90 Vol. 4247 Fol. 295 Uirana Perrel



1249/92