

REMAINING PORTION

101

R.P.O. Vol fol

Cadastral Sheet 23 B, A 20 P 1/b

C. of T. Vol 1774 fol 225

Ward of St. Anns

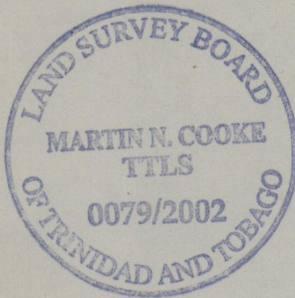
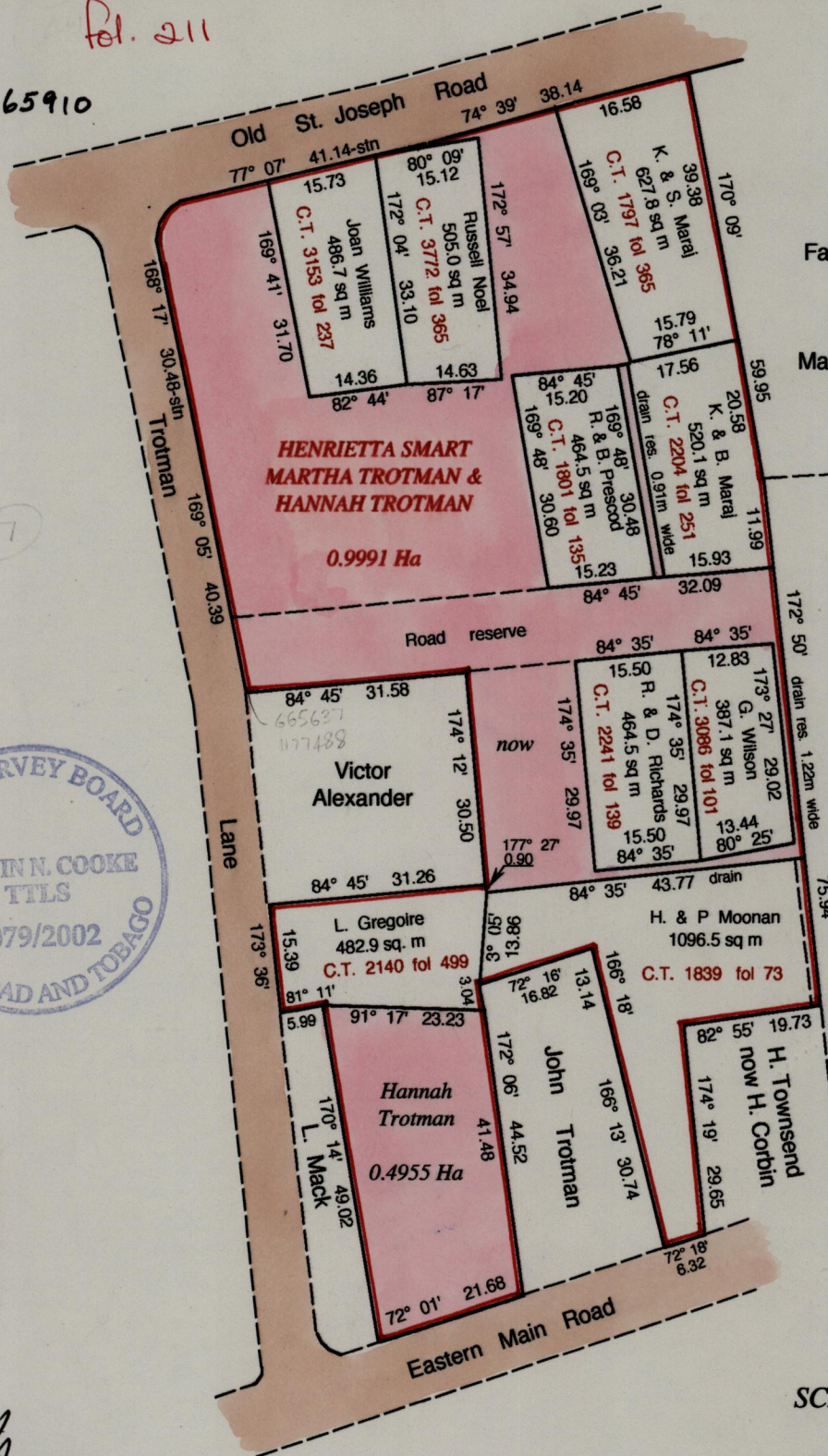
Remaining Portion Plan filed in R.P.O. Vol. 2070 fol. 153 A

County of St. George

Vol. 438 1 fol. 211

Process ID# 65910

G.N.



- Vide
- Bk 1003 : 209, 210
 - Bk 991 : 183
 - Bk 1005 : 85, 209
 - Bk 1157 : 146
 - Bk 1227 : 183

Approved

[Signature]
Director of Surveys
2002.05.06

SCALE 1 : 1,000

Distances are in metres

Rose Maraj

This is a true copy of a diagram of **zero point nine nine nine one hectares** originally granted to **Henrietta Smart, Martha Trotman & Hannah Trotman**, shewing a portion coloured pink and containing **zero point four nine five five hectares** being the remainder after **nine (9) previous transfers** of other portions of land

I hereby certify, that in accordance with Rule 25 (1) of the Lands Surveyors Regulations of 1998, this plan is correct.

Checked by *CP* 8/04/02

[Signature]

Entered on 23B @ 8/03
Belmonte

T. T. L. S. 5th March 2002