

1282

REMAINING PORTION

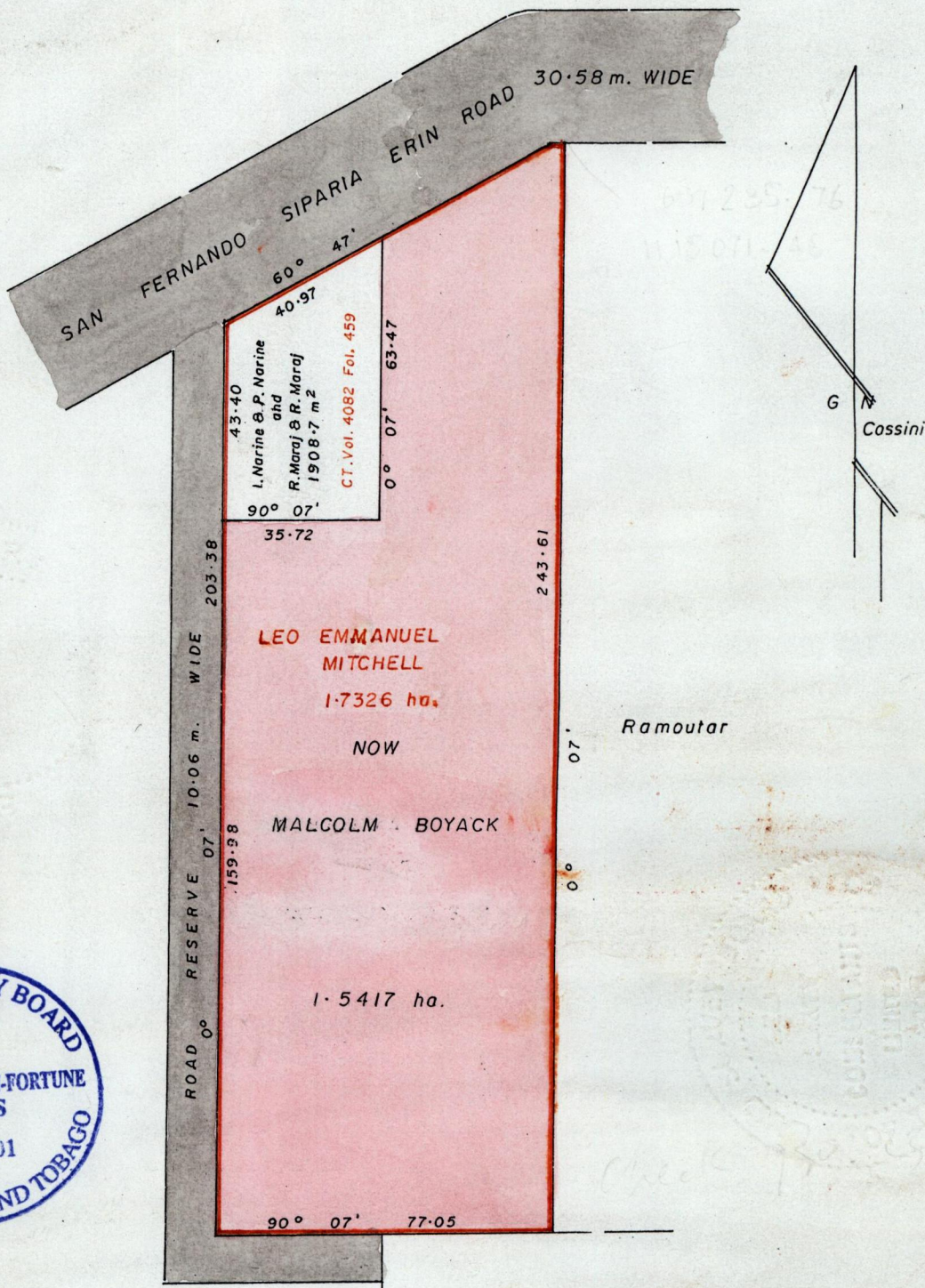
1

Process ~~LD~~ 65862
R.P.O. Vol. 220 Fol. 565
C.T. Vol. 685 Fol. 473
U.P.R.N. No.

1282

Ward of Siparia
County of St. Patrick
Cadastral Sheet G.16.K.72C
4/b

Vol. 4429 fol 363



Approved by

[Signature]

Director of Surveys
1572-07-03

Henry Lobin

c.f. L & S. Bk. 484 Fol. 93
Bk. 1247 Fol. 176

M. Boyack

SCALE:- 1/1500

Distances are in metres

Note: To obtain compass bearings ~~add~~ subtract 7 minutes

This is a true copy of a diagram of one point seven three two six hectares originally granted to Leo Emmanuel Mitchell shewing a portion coloured pink and containing one point five four one seven hectares being the remainder after one (1) previous transfer of another portion of land

In accordance with Regulation 25 (1) of the Land Surveyors' Regulations 1998, I certify that this plan is correct.

Checked by... 21-02-06-06
Entered on... 22-02-07-03

[Signature]
21-05-03

Arnold Ramon Fortune TTLS
29th Nov. 2001
Trinidad & Tobago Land Surveyor