

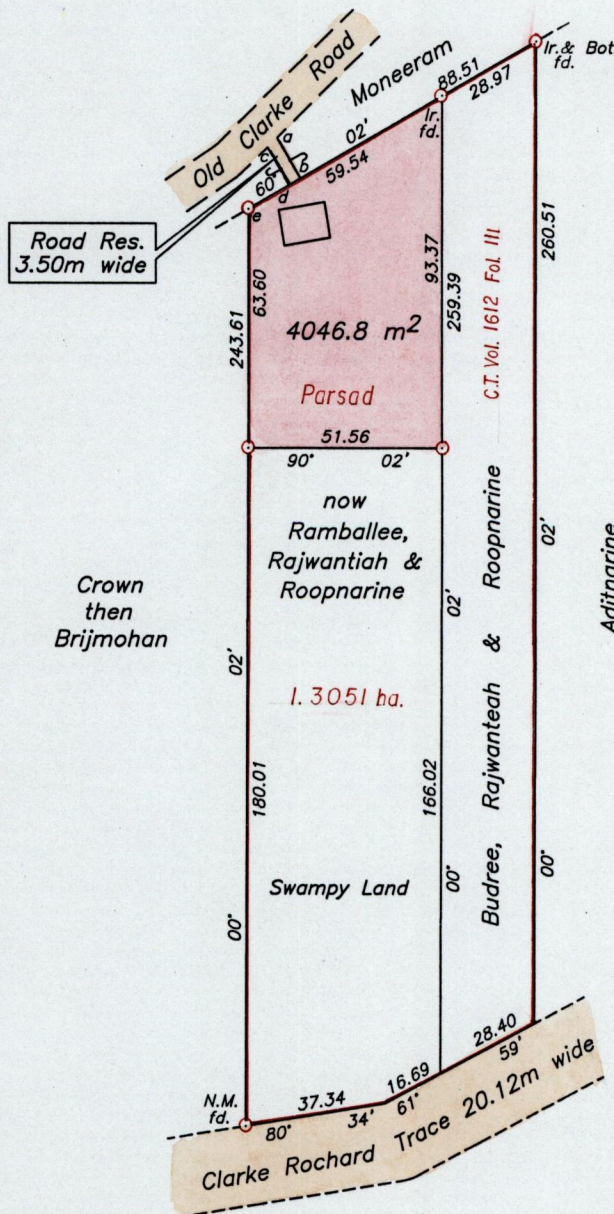
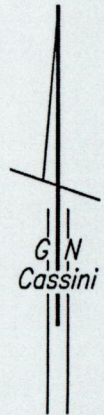
1279

34

R.P.O. Vol. 557
C.T. Vol.

Fol. 303
Fol.

Cadastral Sheet G.14.I. $\frac{64 D}{3/a}$
Ward of Siparia
County of St. Patrick
Vide : Bk. 964 Fol. 113
Bk. 960 Fol. 141



Road Res.
3.50m wide

Legend		
Line	Bearing	Dist.
a-b	150° 02'	12.35
c-d	150° 02'	11.47
e-d	60° 02'	12.44

Approved. *[Signature]*
Director of Surveys
2003-7-31

SCALE 1/2000
Distances are in Metres

○ Denotes Iron put except otherwise stated
Bearings are based on solar observations

Plan of a Parcel of Land coloured pink in the Ward of Siparia
Containing four thousand and forty six point eight square metres
Surveyed by me, with due authority, in August 18th. 1998

In accordance with Regulation 25 (1) of the Land Surveyors' Regulations 1998,
I certify that this plan is correct.

Checked by *[Signature]* *[Signature]* *[Signature]*
Trinidad & Tobago Land Surveyor

Entered. 4/03/2003
Trinidad & Tobago Land Surveyor

