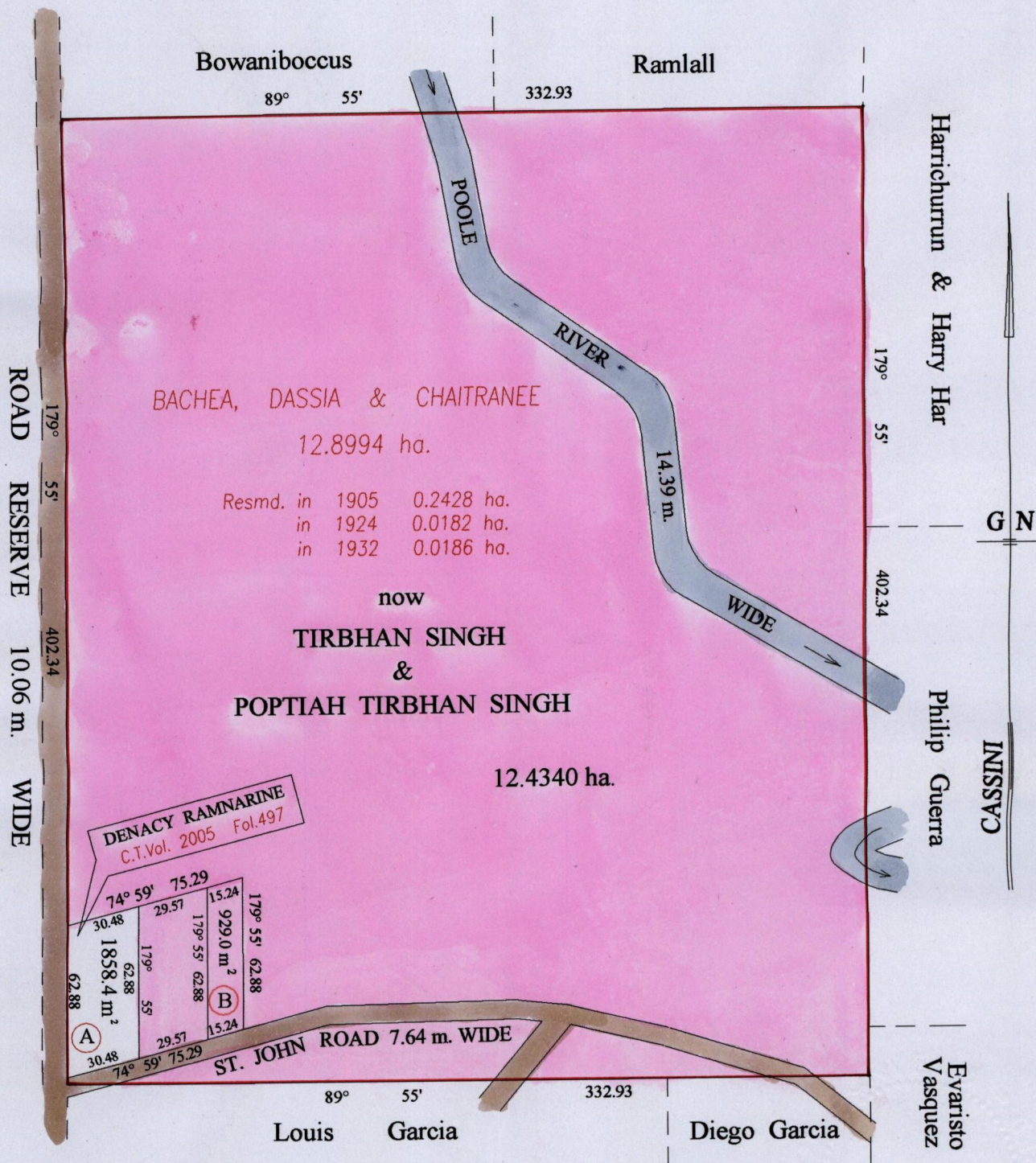


REMAINING PORTION

R.P.O. Vol. 43
C.T. Vol. 1186

Fol. 249
Fol. 361

Wardsof Savana Grande & Charuma
Countysof Victoria & Nariva
Cadastral Sheet (D.24.G.) 54.C.
1/a



Approved *[Signature]*
Director of Surveys
2003-7-31

Vide Bk.985 fol.198

SCALE : 1:2500

Note: Bearings are cassini grid based on solar observations

Distances are in metres

This is a true copy of a diagram of twelve point eight nine nine four hectares, originally transferred to Bachea, Dassia & Chaitranee, shewing a portion coloured pink and containing twelve point four three four zero hectares being the remainder after one (1) previous transfer and three (3) resumptions of other portion of the land. In accordance with Regulation 25 (1) of the Land Surveyors' Regulations 1998 I certify that this plan is correct.

Checked by *[Signature]* 07/07/03

Entered on Trinidad & Tobago Land Surveyor 2-07 2003

