

Ward of Charuma

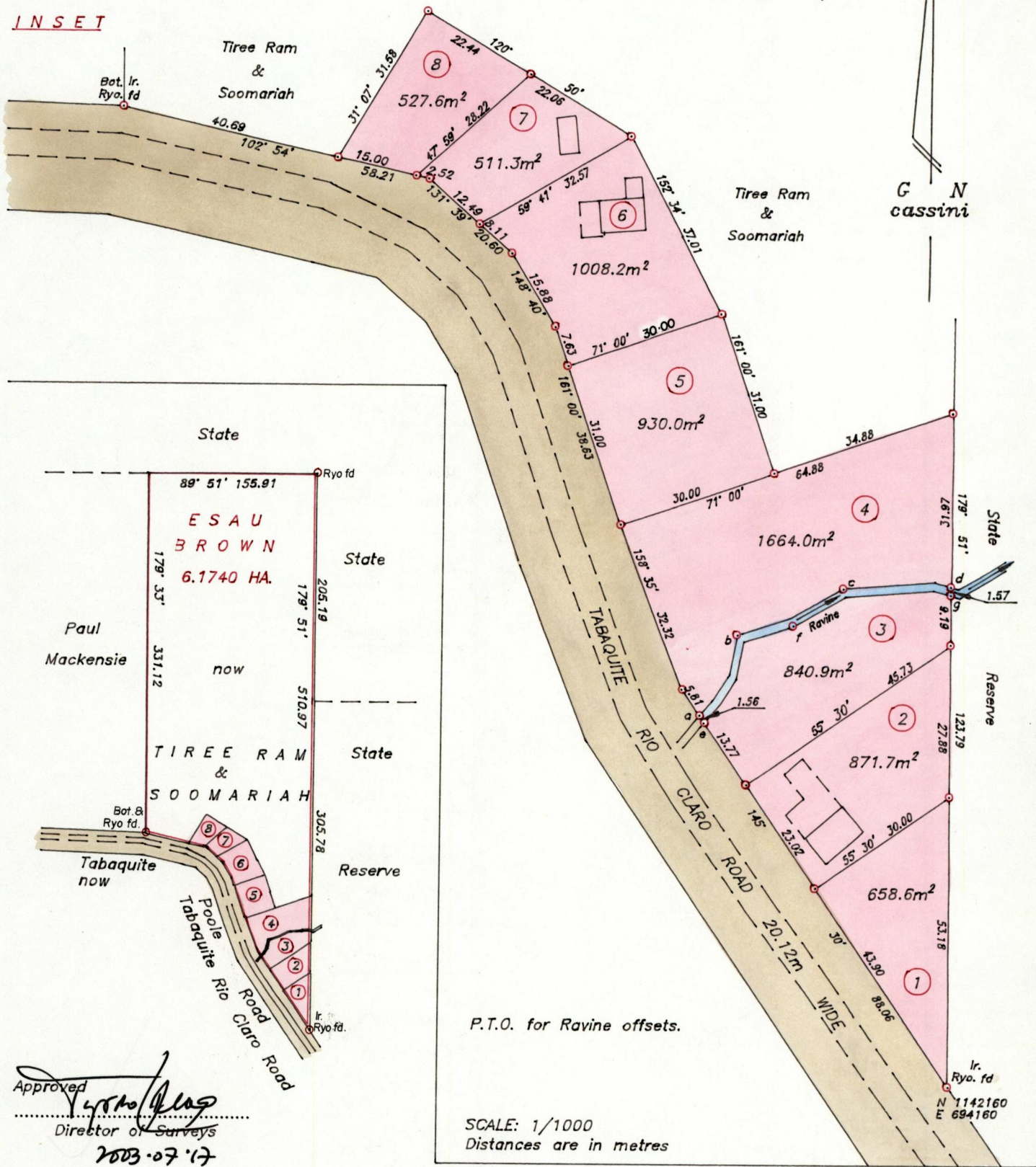
County of Nariva

Cadastral Sheet D.25.L. $\frac{55A}{2/c}$

R.P.O. Vol. 220 Fol. 537

C.T. Vol. Fol.

INSET



P.T.O. for Ravine offsets.

SCALE: 1/1000
Distances are in metres

Approved *[Signature]*
 Director of Surveys
 2003-07-17

Coordinates are scaled from 1/10,000 sheet.
 o Denotes Iron put except otherwise indicated.
 Note: To obtain compass bearings add 9 minutes.
 Bearings are cassini grid based on the magnetic needle

See Bk.275 Fol.125
 SCALE 1/5000
 Distances are in metres

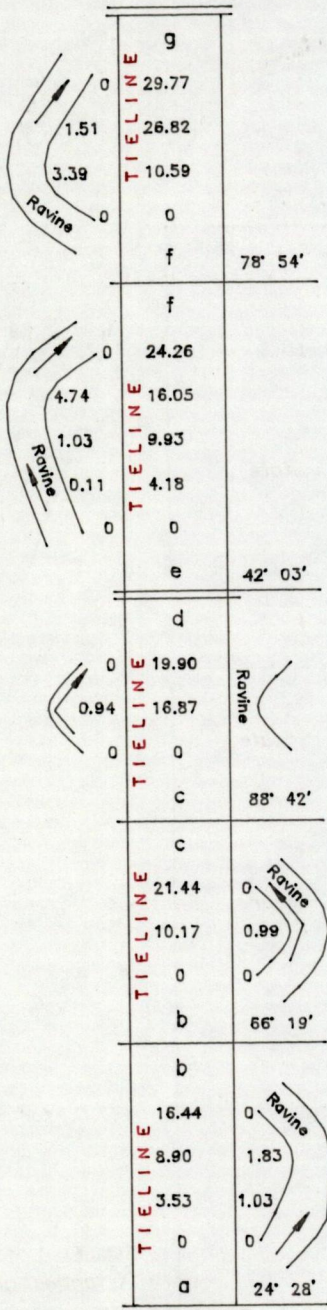


PLAN of 8 Parcels of land coloured pink in the Ward of Charuma
 Containing together seven thousand and twelve point three square metres
 Surveyed by me, with due authority, in September 1998

In accordance with regulation 25 (1) of the Land Surveyors' Regulation 1998,
 I certify that this plan is correct.

Checked by *[Signature]* 21/10/03

Entered..... Trinidad & Tobago Land Surveyor *[Signature]* 21st October 2003



28 AUG 2002
 Lands and
 Surveys
 Division

1229/23