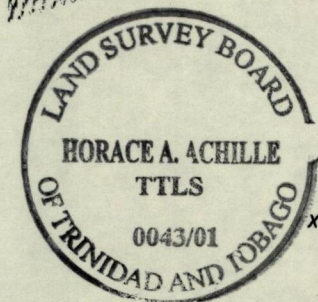
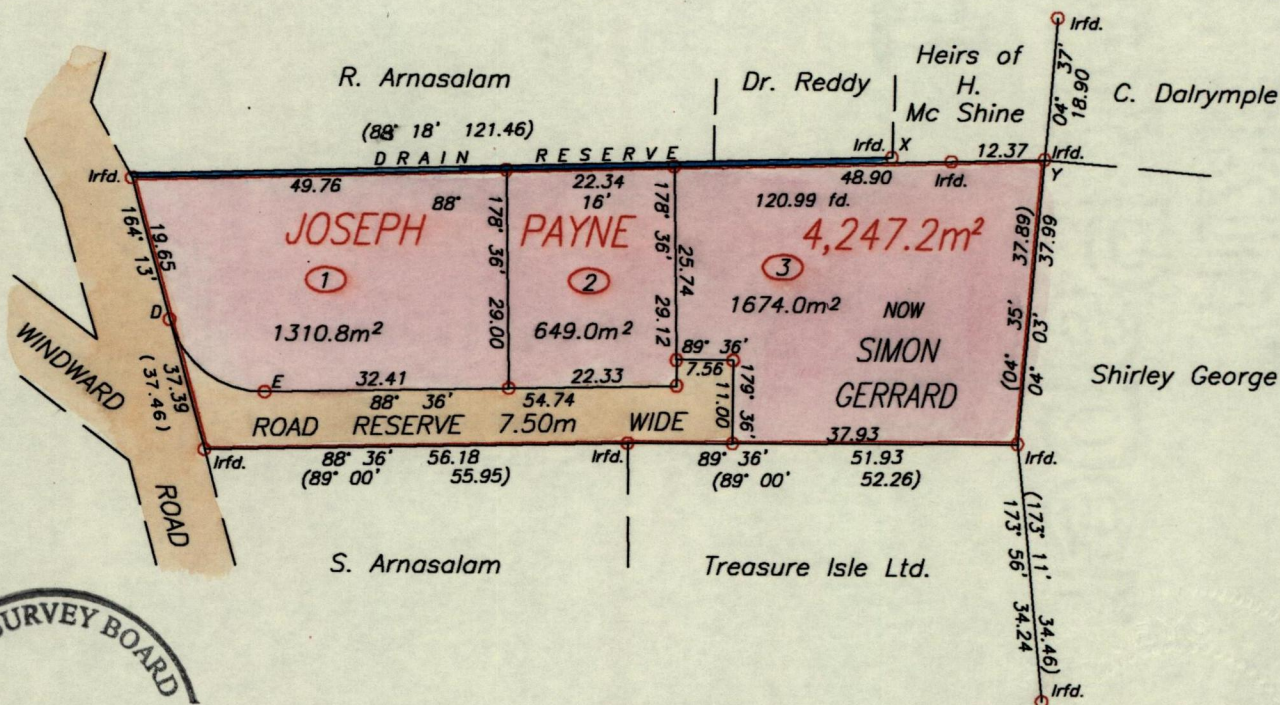
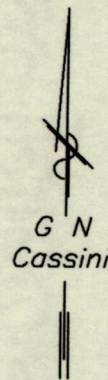


R.P.O. Vol. Fol.

C.T. Vol. 3134 Fol. 187

VIDE: L.&S. Bk.1149 Fol.142

Cadastral Sheet <sup>2G</sup> 6/a/2 (I.17.P.)  
Ward of Tobago  
Parish of St. Andrew



X - Y 90° 18' 20.24

CURVE DATA

BEARING	CHORD	RADIUS
126° 25'	15.80	12.88

Approved *[Signature]*  
a (Director of Surveys) 2003.5.8

SCALE 1:1000  
Distances are in METRES

o Denotes Iron put unless otherwise stated  
Bearings are based on Solar observations

PLAN of 3 Parcels of land coloured pink in the Ward of Tobago  
Containing (1) one thousand three hundred and ten point eight square metres  
(2) six hundred and forty nine point zero square metres  
(3) one thousand six hundred and seventy four point zero square metres

Surveyed by me, with due authority, in June 2000 at the request of Simon Gerrard  
In accordance with Regulation 25 (1) of the Land Surveyors' Regulations 1998,  
I certify that this Plan is correct.

Checked by *[Signature]* 21.03.05.06

*[Signature]* Horace A. Achille T.T.L.S.

Entered on .....

Trinidad & Tobago Land Surveyor *[Signature]* 4<sup>th</sup> July 2001