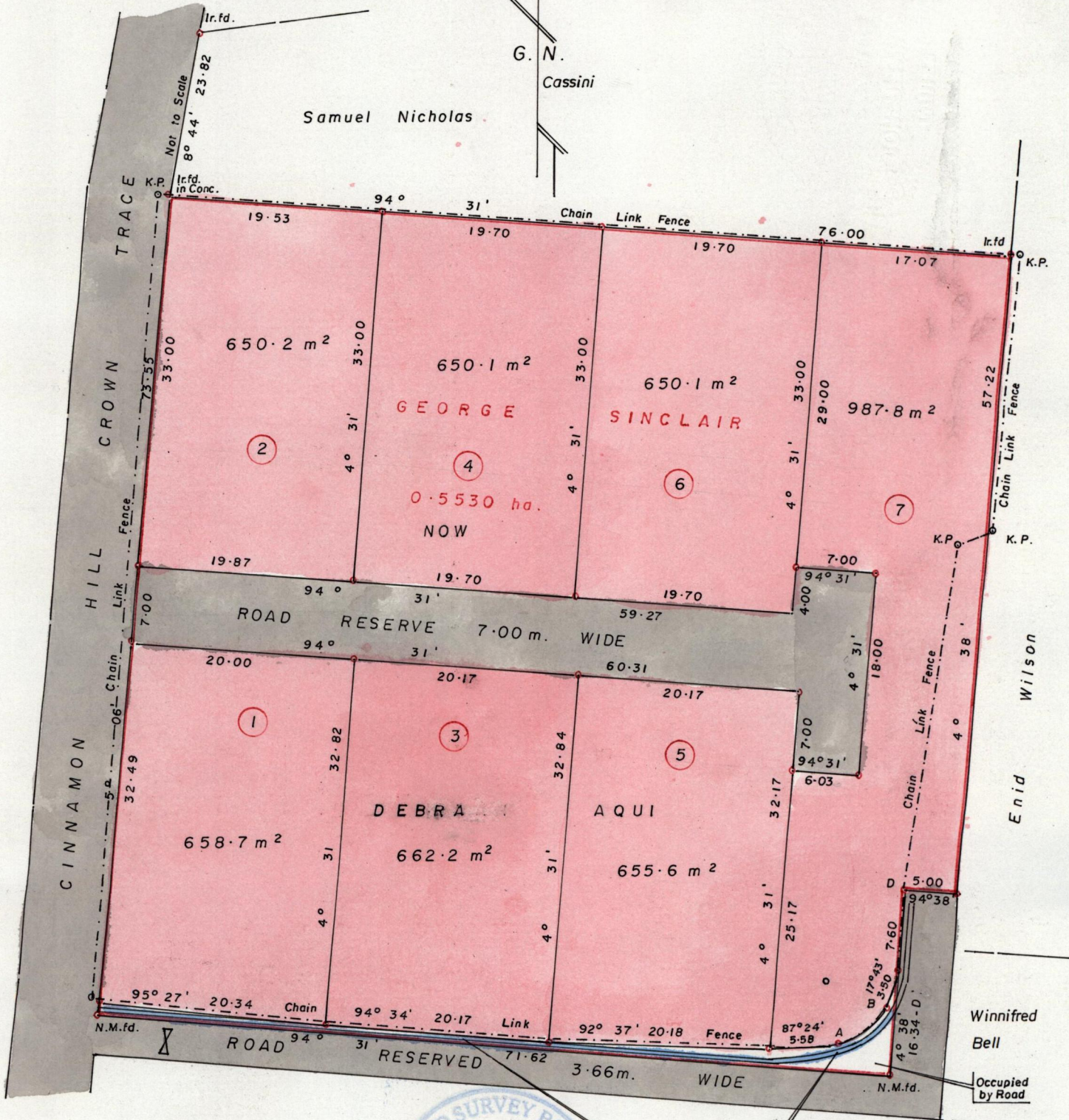
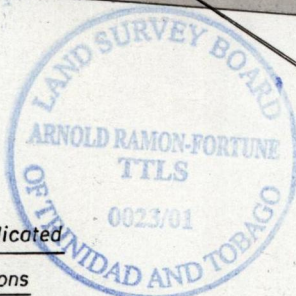


R.P.O. Vol. Fol.
C.T. Vol. 3195 Fol. 13

Ward of Tobago
Parish
~~County~~ of St. Andrew
Cadastral Sheet 1.17. $\frac{2.6}{1/d/4}$



Approved
[Signature]
 Director of Surveys
 2004-1-6



EXISTING INVERT DRAIN

A - B = $59^{\circ}23' 5.67$
 Radius = 5.70
 O = $59^{\circ}42'$

VIDE: L&S. Bk. 1159
 Fol. 86

SCALE : 1 / 500

○ Denotes Iron put except otherwise indicated
 Bearings are based on Solar Observations
 Note: To obtain compass bearings subtract minutes.

Distances are in metres

PLAN of 7 Parcels of land coloured pink in the Ward of Tobago
 Containing together four thousand nine hundred and fourteen point seven square metres.

Surveyed by me with due authority in June 2001
 In accordance with ^{Regulation} ~~Rule~~ 25(1) of the Land Surveyors' Regulations 1998,
 I certify that this plan is correct.

Checked by *[Signature]*

[Signature] T.T.L.S. M.A.I.C.S.
 Trinidad & Tobago Land Surveyor

Entered.....

with July 20.01.