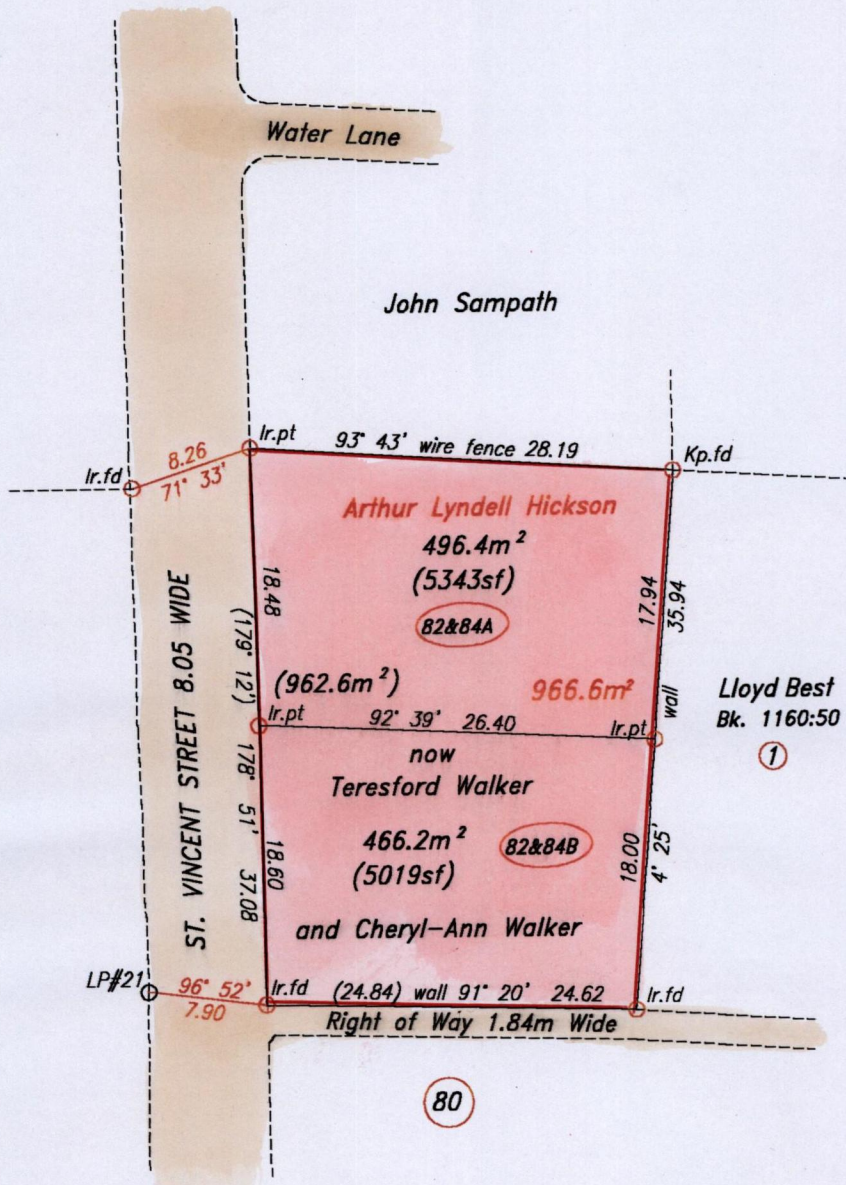


Tunapuna

Plan MA.3

N



Approved *[Signature]*
 Director of Surveys 2003.4.30



SCALE 1/500

Distances are in metres

Bearings are Cassini grid based on solar observations.

Plan of two parcels of land coloured pink in the Ward of Tacarigua Containing nine hundred and sixty two point six square meters.

Surveyed by me, with due authority, in May, 2002.

In accordance with Regulation 25 (1) of the Land Surveyors' Regulations 1998, I certify that this plan is correct.

Checked by *[Signature]*

[Signature]

Entered on

Trinidad and Tobago Land Surveyor 2003.