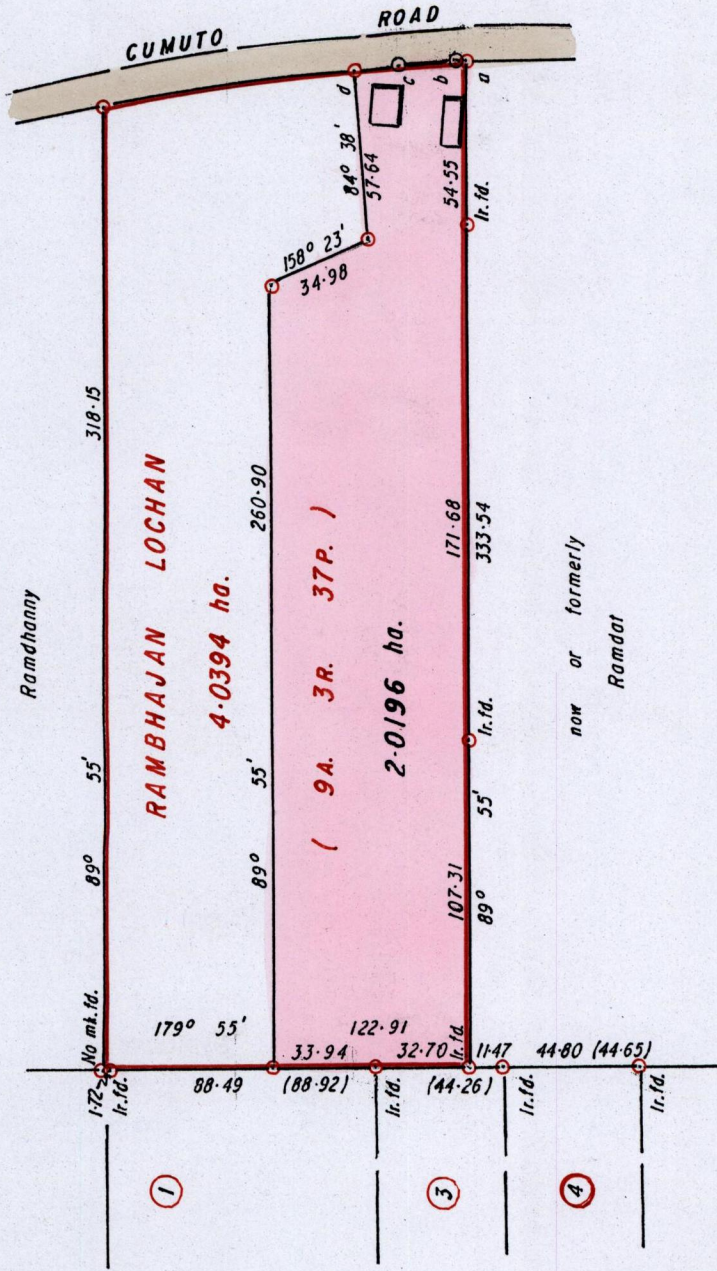


R.P.O. Vol. 164
C.T. Vol. 3254

Fol. 385
Fol. 289

Ward of Savana Grande
County of Victoria
Cadastral Sheet G.9.L., 64B
3/a

Ref. PLAN P.E. 17
Bk. 356 fol. 193



1279

272

a-b	12° 20'	2-21
b-c	354° 27'	20-12
c-d	356° 44'	17-25

SCALE 1 / 2500

○ Denotes Iron put unless otherwise stated

Approved *[Signature]*
Director of Surveys

Note: To Obtain compass bearings add/subtract minutes

Bearings are Cassini Grid based on Solar Obs.

Distances are in METRES

PLAN of a Parcel of land coloured PINK in the Ward of Savana Grande
Containing two point zero one nine six hectares
Surveyed by me, with due authority, in May 2002
In accordance with Regulation 25 (1) of the Land Surveyors' Regulations 1998, I certify that this plan is correct.

Checked by *[Signature]*

Entered Trinidad and Tobago Land Surveyor 200.3