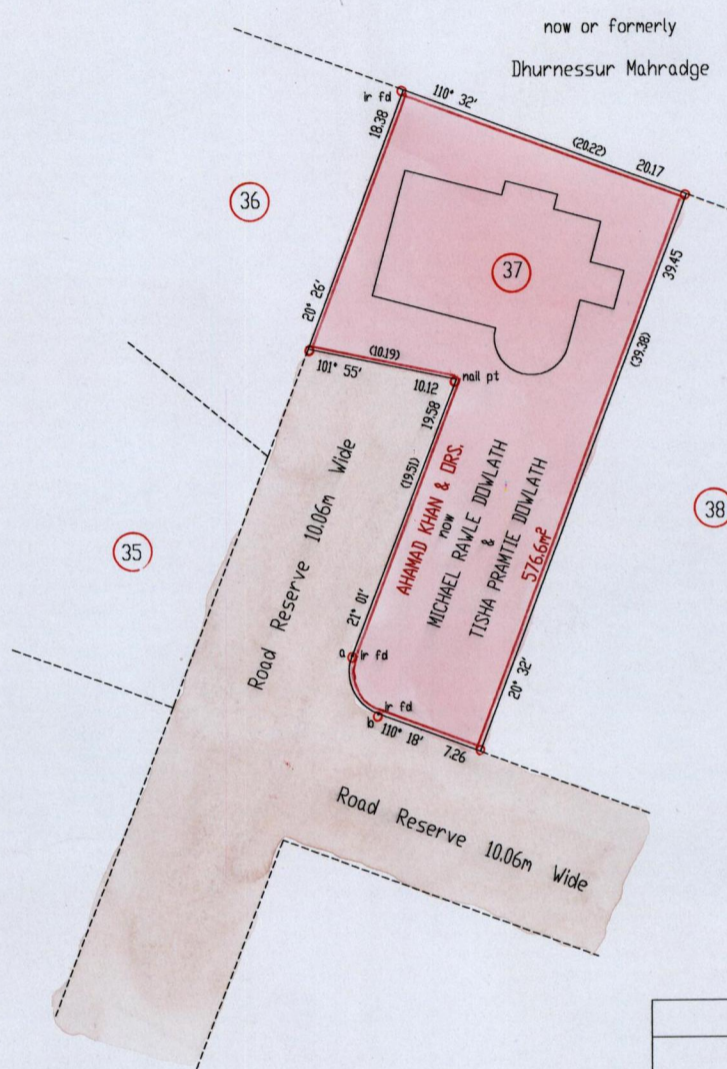


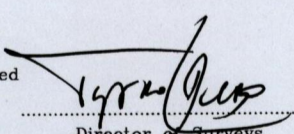
R.P.O. Vol. 28 Fol. 221
C.T. Vol. 3797 Fol. 213
U.P.R.N. No.:

Ward of Naparima
County of Victoria
Cadastral Sheet G.B.N. 63C
3/c

1279/2013



DATA for ARC a - b			
	Chord Bearing	Chord Distance	Radius
a - b	155° 37' (155° 49')	4.29	3.01

Approved 
Director of Surveys
2003/11/14

Reference: Plan J.A. 108

SCALE 1: 500

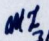
Distances are in metres

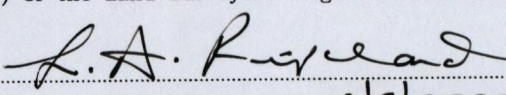
o Denotes iron put except otherwise stated

Bearings are Cassini Grid based on Solar Observations

PLAN of a parcel of land coloured pink in the Ward of Naparima
Containing five hundred and seventy six point six square metres
Surveyed by me, with due authority, in November 2002

In accordance with Regulation 25(1) of the Land Surveyors' Regulations 1998, I certify that this plan is correct.

Checked by  21-10-03
Entered


Trinidad & Tobago Land Surveyor 3/9/2003

