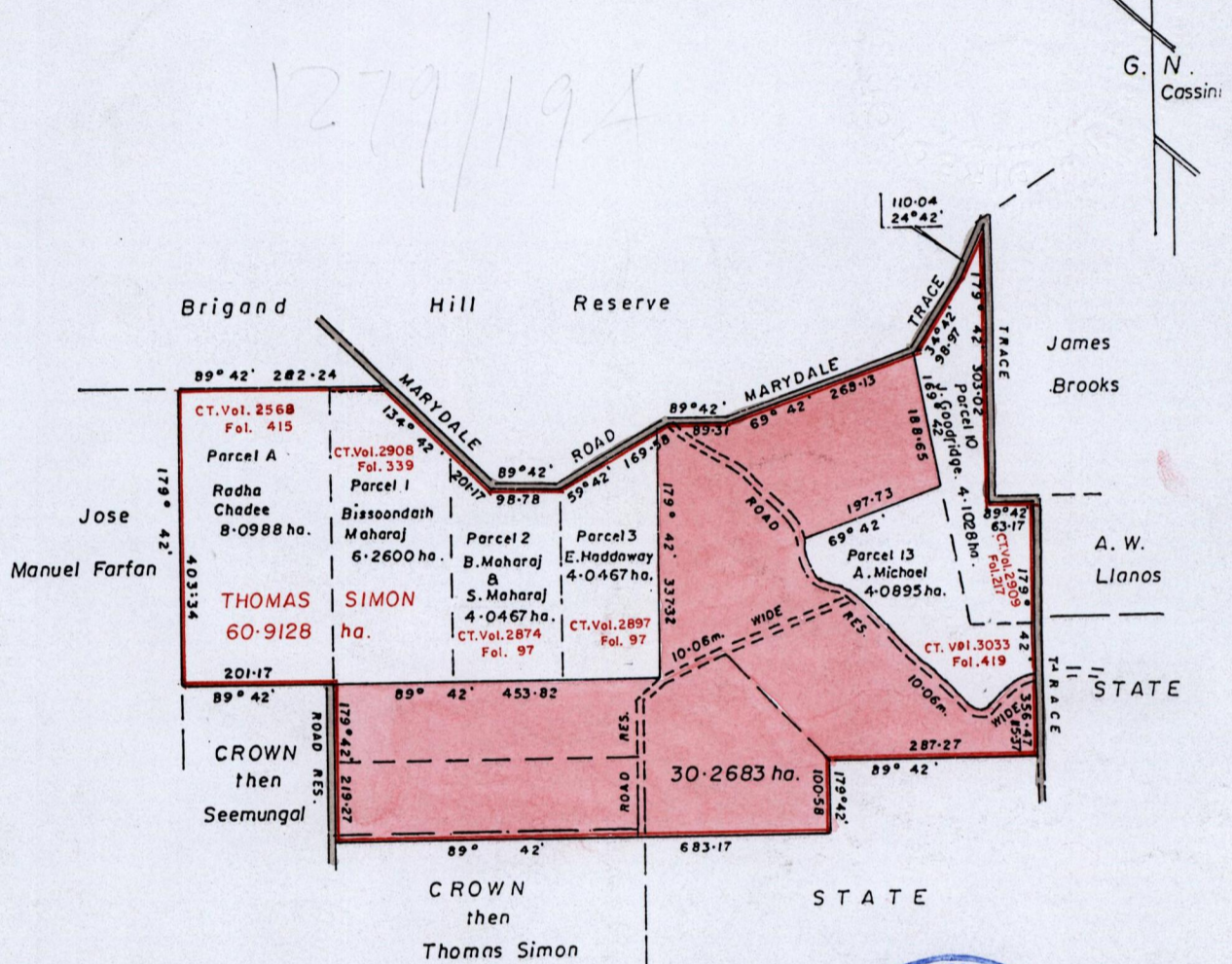


R.P.O. Vol. 65 Fol. 559
C.T. Vol. 2258 Fol. 191
U.P.R.N. No.

Ward of Turure
County of St. Andrew
Cadastral Sheet E.8.M.

360
1/b&d & 2/a&c

MARYDALE ESTATE



Approved by

[Handwritten Signature]

Director of Surveys
1003/11-12

cf: LBS. Plan R.H. 82

SCALE:- 1/10,000
Distances are in metres

Note: To obtain compass bearings add ~~minutes~~ 18 minutes

This is a true copy of a diagram of sixty point nine one two eight hectares originally transferred granted to Thomas Simon shewing a portion coloured pink and containing thirty point two six eight three hectares being the remainder after six (6) previous transfers of ~~an~~ other portions of land

In accordance with Rule 25 (1) of the Land Surveyors' Regulations 1998, I certify that this plan is correct.

Checked by... M.M. 27/10/03

Entered on.....

[Handwritten Signature] TTLS.

Trinidad & Tobago Land Surveyor... 6th May 2003