

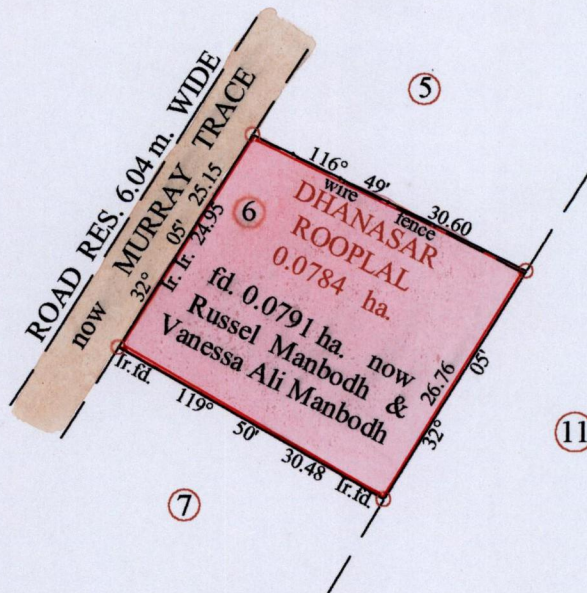
1279

16

R.P.O. Vol. 81 fol. 97
C.T. Vol. 1935 fol. 51

Ward of Siparia
County of St. Patrick
Cadastral Sheet (G. 12. G) $\frac{63 E}{1/c}$

Vide Plan R. F. 22



Approved *[Signature]*
Director of Surveys 2003-4-16

○ Denotes Iron Put Except
Otherwise Stated

SCALE : 1: 750

Bearings are cassini grid based on solar observations Distances are in metres
PLAN of a Parcel of land coloured pink in the Ward of Siparia
Containing point zero seven nine one hectares
Surveyed by me, with due authority, in May 2002
In accordance with Regulation 25 (1) of the Land Surveyors Regulations 1998,
I certify that this plan is correct.

Checked by *[Signature]* Sugjate Reeman

Entered on Trinidad & Tobago Land Surveyor 20th May, 2002