

1279

14

R.P.O. Vol. 64

Fol. 235

Ward of Siparia

C.T. Vol. 3517

Fol. 335

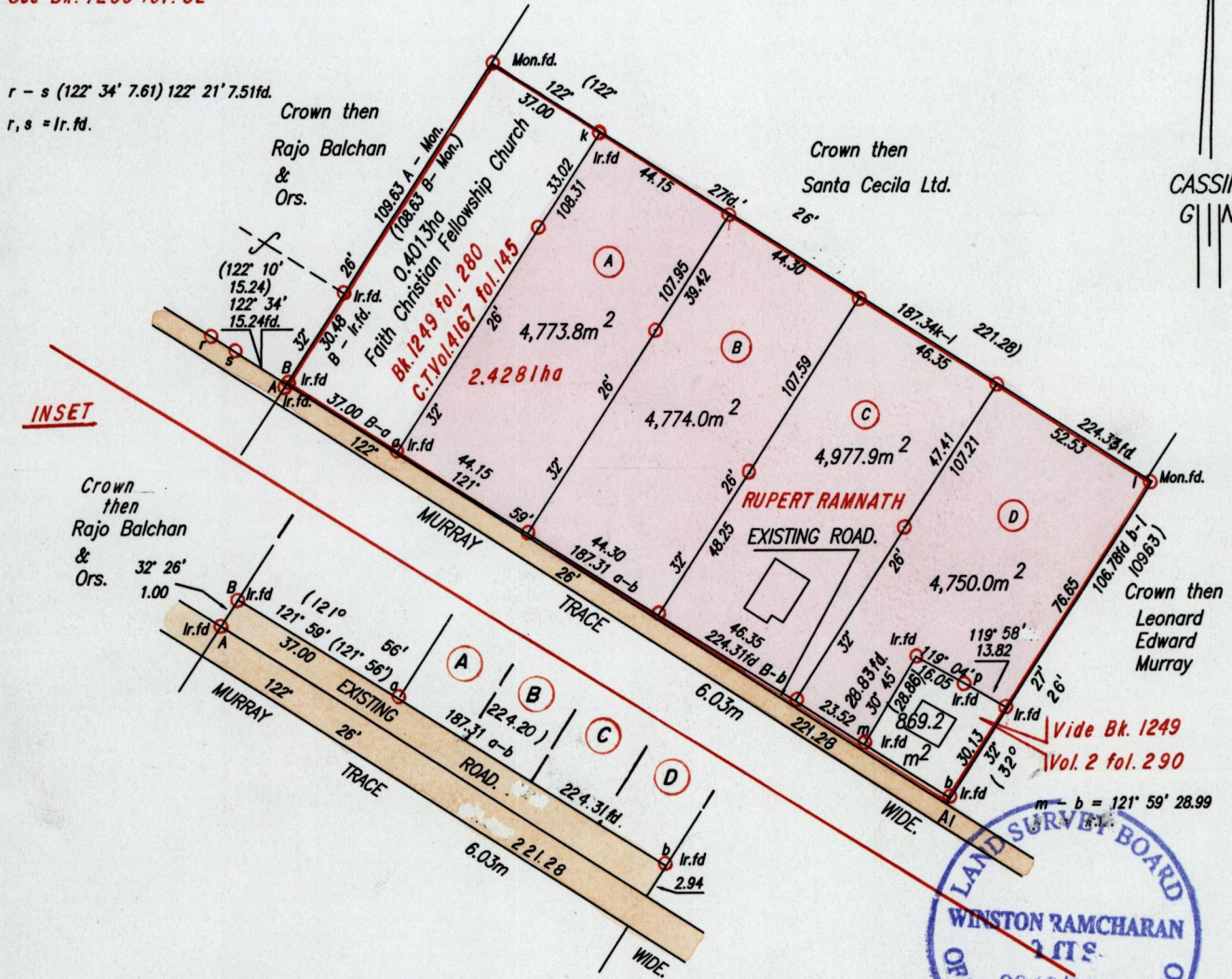
County of St.Patrick.

Cadastral Sheet G.12.K. 63E  
3/a

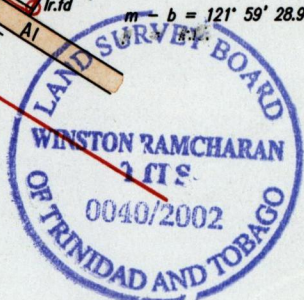
Vol. 3490 fol.397

Vide Bk. 1211 fol.154

See Bk. 1200 fol. 52



CASSINI  
G I W



NOT TO SCALE

Approved  
  
 Director of Surveys 2003.4.16

SCALE 1:2000  
 Distances are in Metres

○ Denotes Iron put except otherwise stated.  
 Bearings are based on Solar Observations  
 PLAN of 4 Parcels of land coloured pink in the Ward of Siparia.  
 Containing together nineteen thousand, two hundred and seventy five point seven square metres.  
 Surveyed by me, with due authority, in November, 2001  
 In accordance with regulation 25(1) of the Land Surveyors' Regulations 1998,  
 I certify that this plan is correct

Checked by: 19/02/03

.....

Entered on. . . . .

Trinidad & Tobago Land Surveyor. 16<sup>th</sup> April 2002