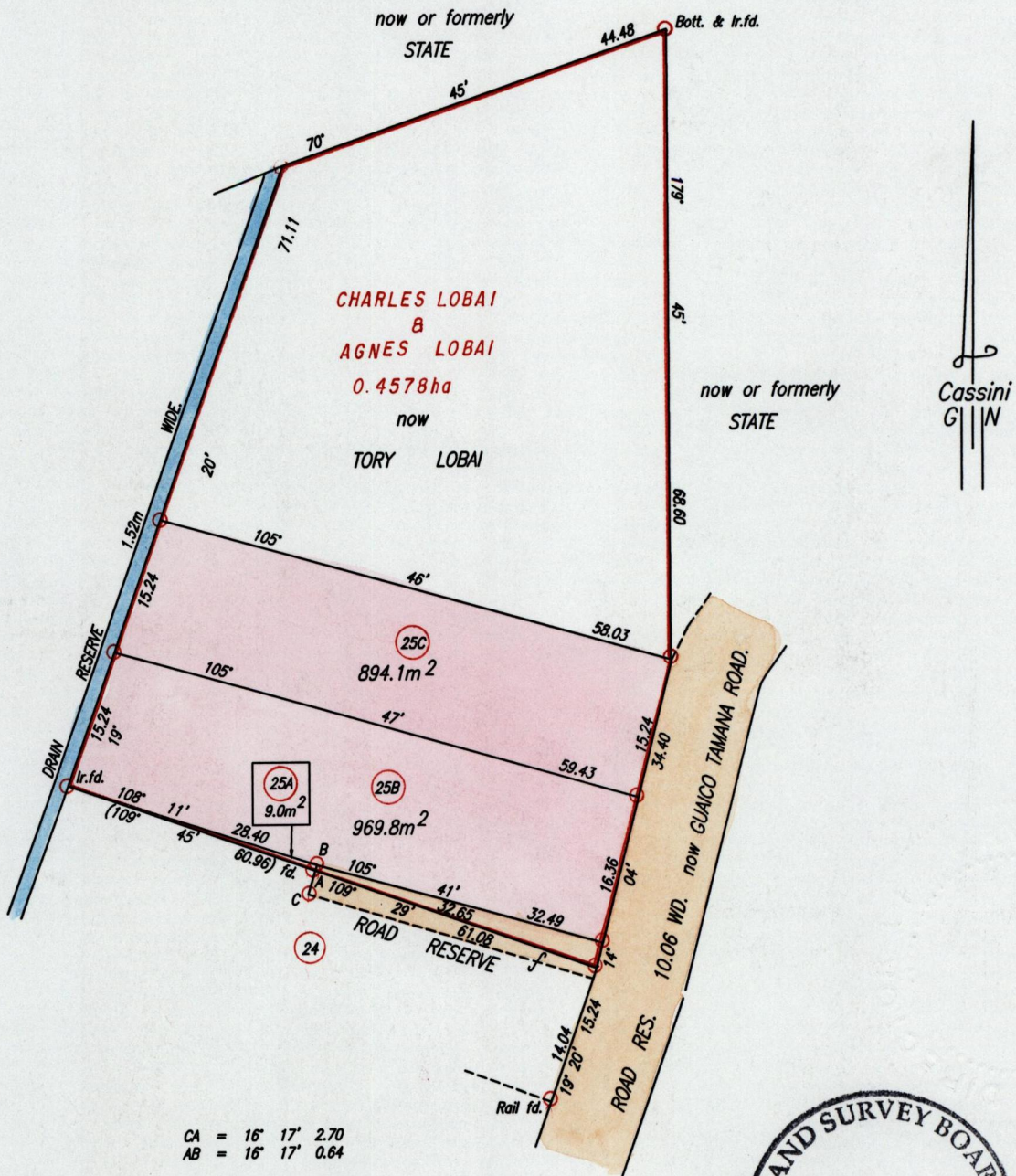


R.P.O. Vol. 106 Fol. 387
C.T. Vol. 1756 Fol. 243
Vide Plan AB63

Cadastral Sheet E.1.D. 25F
Ward of Tamana 2/d
County of St. Andrew



CA = 16° 17' 2.70
AB = 16° 17' 0.64



Approved
[Signature]
Director of Surveys

SCALE 1:750
Distances are in Metres

○ Denotes Iron put except otherwise stated.
Bearings are based on Solar Observations

PLAN of 3 Parcels of land coloured pink in the Ward of Tamana
Containing together one thousand, eight hundred and seventy two point nine square metres.
Surveyed by me, with due authority, in March, 1989
In accordance with Regulation 25(1) of the Land Surveyors' Regulations 1998,
I certify that this plan is correct.

Checked by *[Signature]* 2003/9/18

Entered on Trinidad & Tobago Land Surveyor . 21st March 2003
PATH = EV700 C:\Drawings\ Lobai.dwg.