

1279

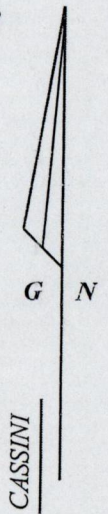
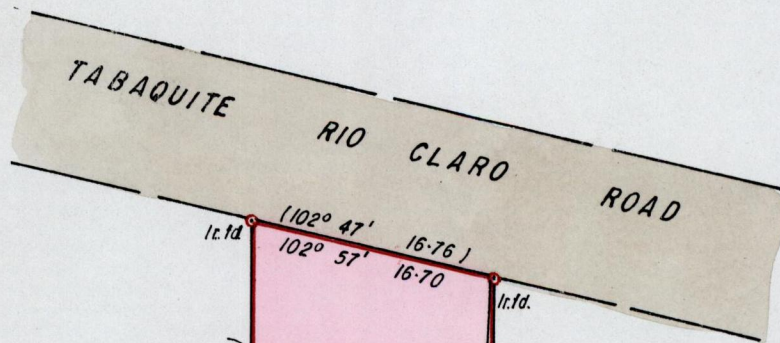
120

R.P.O. Vol. 805
C.T. Vol. 2472

Fol. 435
Fol. 263

Ward of Charuma
County of Nariva
Cadastral Sheet D.25.E., $\frac{54C}{21a}$

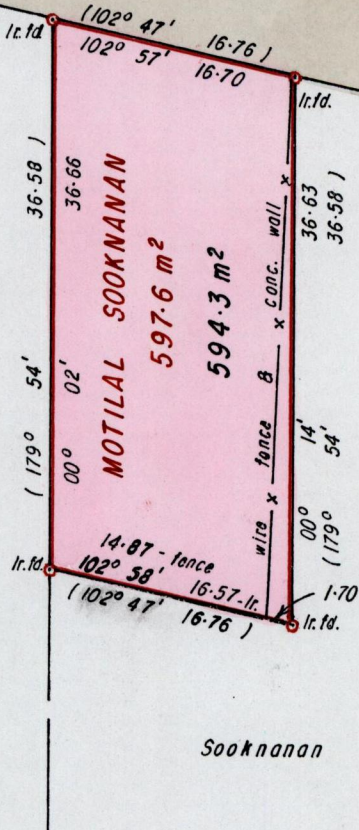
Ref. PLAN B. F. 52
Bk. 1103 fol. 222



Allotment

186A

Nandalal Seegobin



Allotment

187A

Sooknanan Adith



Approved

[Signature]

Director of Surveys

2002-9-11

o Denotes Iron put unless otherwise stated

Bearings are Cassini Grid based on Solar Obs.

SCALE 1 / 500

Distances are in METRES

Note: To Obtain compass bearings add/subtract minutes

PLAN of a Parcel of land coloured PINK in the Ward of Charuma
Containing five hundred and ninety four point three square metres
Surveyed by me, with due authority, in November 2002
In accordance with Regulation 25 (1) of the Land Surveyors' Regulations 1998,
I certify that this plan is correct.

Checked by M.M. 27/08/03

[Signature: Kelvin Ramdass]

Entered

Trinidad and Tobago Land Surveyor..... 10/12/.....2002