

R.P.O. Vol. 51

Fol. 539

Cadastral Sheet D.2.D. 23F

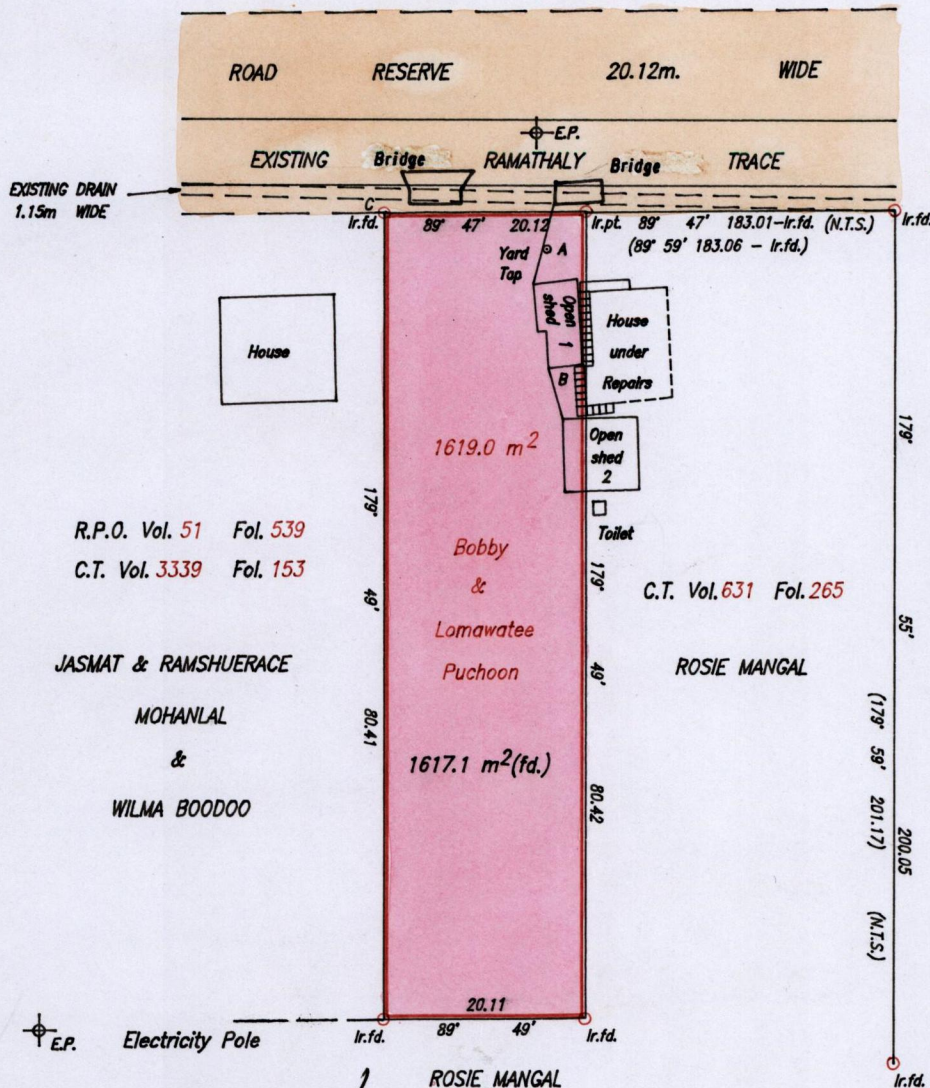
C.T. Vol. 3949

Fol. 491

Ward of Cunupia

4/b

County of Caroni



AREAS OF ENCROACHMENTS	
Open Area A	= 29.3 m ²
Open Area B	= 10.5 m ²
Open Shed 1	= 34.6 m ²
Open Shed 2	= 15.6 m ²
Stairs	= 7.3 m ²
Total	= 97.3 m²
C - E.P.	61' 52' 17.36

R.P.O. Vol. 51 Fol. 539
C.T. Vol. 3339 Fol. 153

C.T. Vol. 631 Fol. 265

JASMAT & RAMSHUERACE
MOHANLAL
&
WILMA BOODOO

ROSIE MANGAL

Vide Bk. 717/65
719/92

SCALE 1:750

Distances are in metres



Approved
Director of Surveys
2002-07-03

Bearings are based on Solar Observations

PLAN of a Parcel of land coloured pink in the Ward of Cunupia
Containing one thousand six hundred and seventeen point one square metres
Redefined by me, with due authority, in February, March & May 2001 for Bobby & Lomawatee Puchoon
In accordance with Regulation 25 (1) of the Land Surveyors' Regulations 1998,
I certify that this plan is correct.

Checked by M.M. 1/15/02

Bhagirathi Maharaj

Entered Trinidad & Tobago Land Surveyor 17th April 2002.

1271



25 APR 2002
Lands and
Surveys
Division