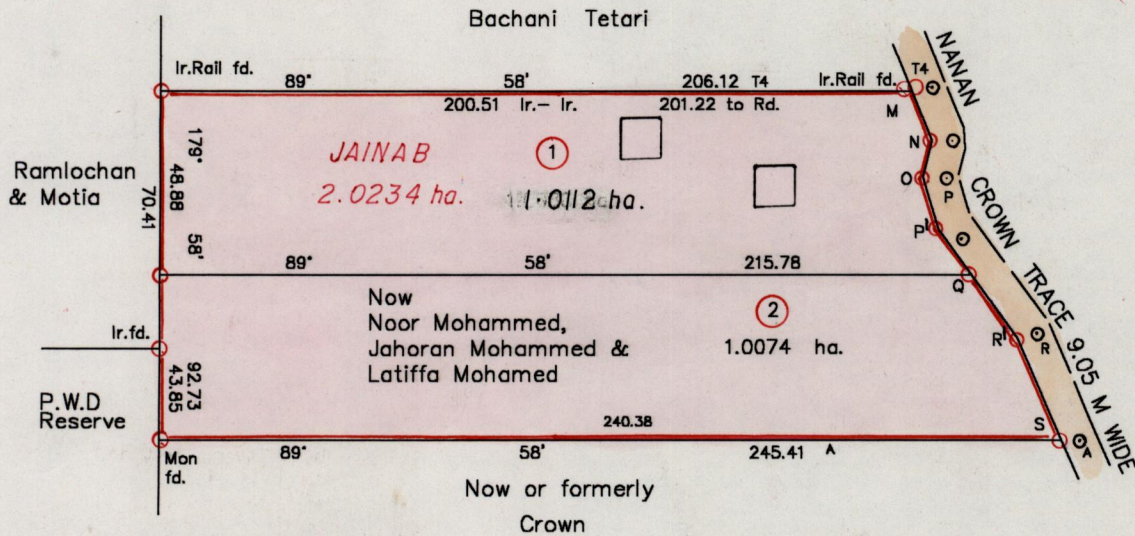
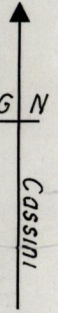


R.P.O. Vol. 712
C.T. Vol

Fol. 369
Fol.

Ward of Moruga
County of Victoria
Cadastral Sheet G 14 G 64 D
2/c

Bk. 673 Fol. 30



ADJUSTED			
NANAN TRACE S/O 431/30			
T - O	157° 34	14.08	
O - P	194° 11	10.04	
P - Q	163° 08'	16.31	
Q - R	143° 43	33.88	
R - A	156° 40	29.45	

STA FROM	STA TO	BG.	DIST.
M	N	157° 34	14.45
N	O	194° 11	9.80
O	P ¹	163° 08'	18.34
P ¹	Q	143° 43	10.50
Q	R ¹	143° 43	23.64
R ¹	S	156° 40	26.99

○ Denotes iron put except otherwise stated
Bearings are Cassini Grid based on solar obs.

Approved *[Signature]*
Director of Surveys

1602.08.01

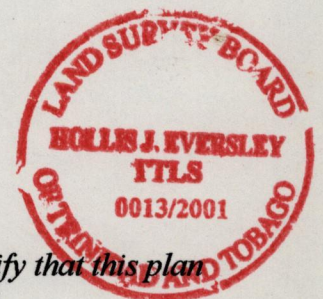
Note: To obtain compass bearings add/subtract minutes
SCALE 1: 2000
Distances are in metres

PLAN of 2 Parcels of land coloured pink in the Ward of Moruga
Containing Two point zero one eight six hectares
Surveyed by me, with due authority, in March 2001

In accordance with Reg. (25) (1) of the Land Surveyors Regulations 1998 I certify that this plan is correct.

Checked by *[Signature]* 02.08.01

Entered on , *[Signature]* Trinidad and Tobago Land Surveyor 2001



77

1271



[Faint handwritten signature]

30 JUL 2001
Lands and
Surveys
Division

1271/74