

1271

70

R.P.O. Vol. 709 Fol. 357

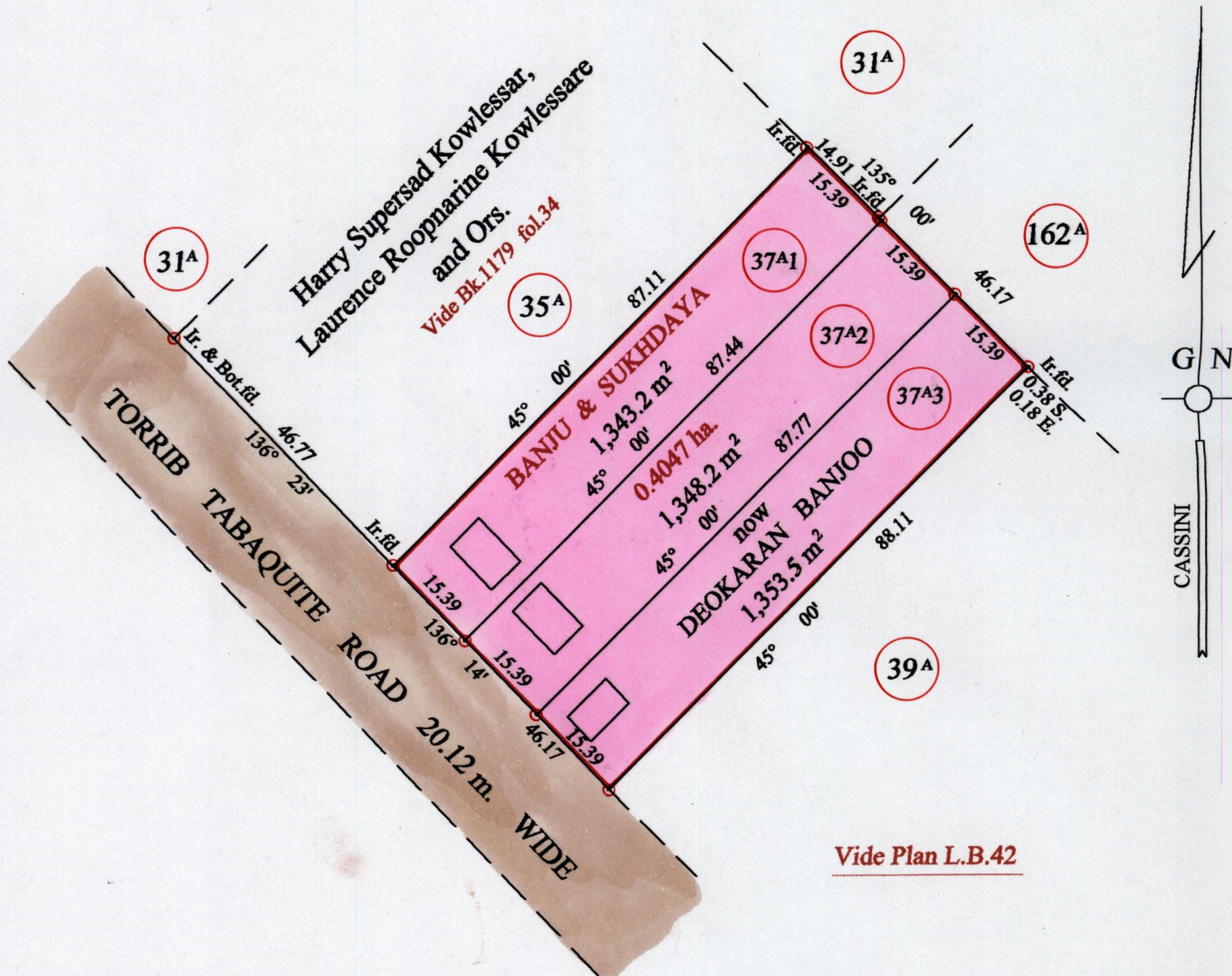
C.T. Vol. Fol.

Ward of Charuma

County of Nariva

Cadastral Sheet (D.25.E.) 54.C.

2/a & 2/c



Approved *[Signature]*  
 Director of Surveys  
 2002.08.14

○ Denotes Iron put except stated otherwise.

SCALE : 1:1000

Note: Bearings are cassini grid based on solar observations

Distances are in metres

PLAN of 3 Parcels of land coloured pink in the Ward of Charuma  
 Containing together four thousand and forty four point nine square metres  
 Surveyed by me, with due authority, on the 12th October 1999  
 In accordance with regulation 25 (1) of the Land Surveyors' Regulations 1998,  
 I certify that this plan is correct.

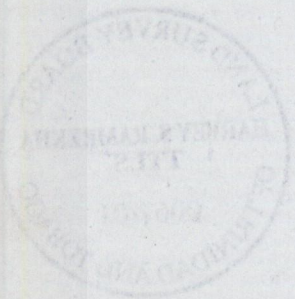
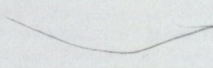
Checked by *[Signature]* *[Signature]*



Entered on ..... Trinidad & Tobago Land Surveyor ..... 19 . 11 . . . . . 2001

76

1271



21 NOV 2001  
Lands and  
Surveys  
Division