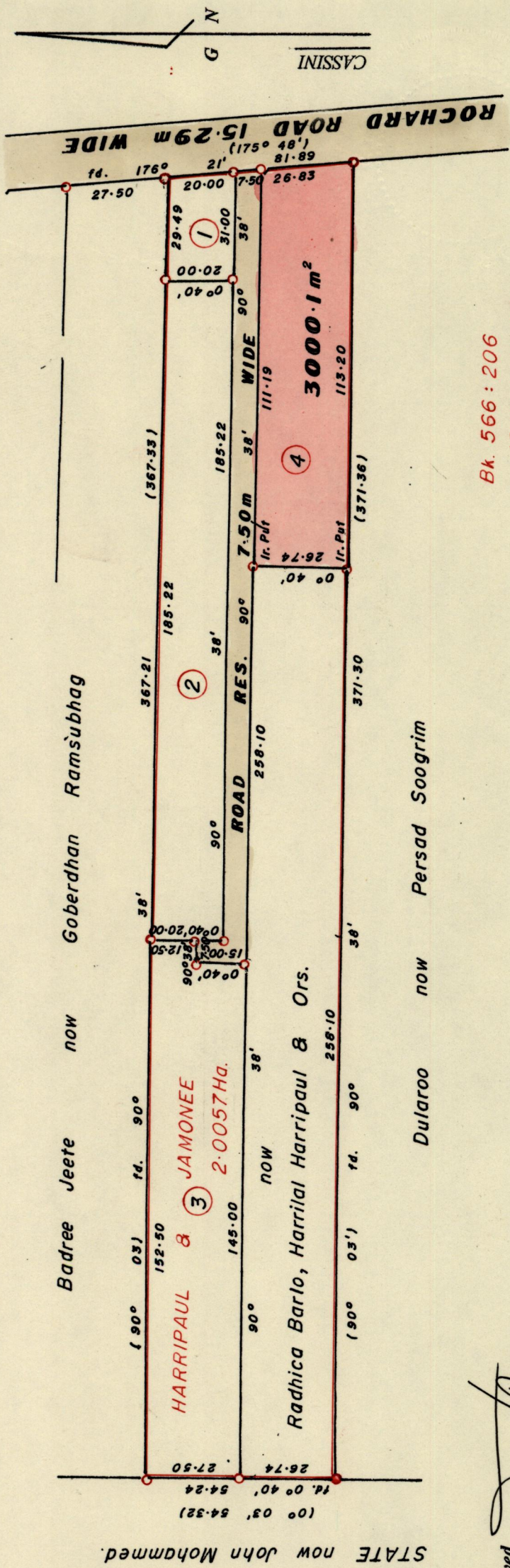


R.P.O. Vol. 586
C.T. Vol. 1255

Fol. 515
Fol. 327

Ward of Siparia.
County of St. Patrick.
Cadastral Sheet G.14.I 64D
3/a.



Approved *[Signature]*
Director of Surveys
17.08.04

Bk. 566 : 206
1249 Vol. 2 : 246

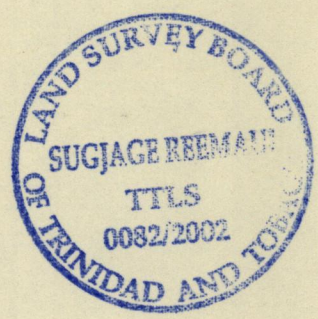
SCALE 1:1500.

o Denotes Iron ~~pin~~ unless otherwise stated

Bearings are Cassini Grid based on Solar Obs.
Distances are in METRES

PLAN of a Parcel of land coloured PINK in the Ward of Siparia.
Containing three thousand point one square metres.
Surveyed by me, with due authority, in January 2001.
In accordance with Reg. 25 (1), of the Land Surveyors Regulations 1998. I certify that this plan is correct.

Checked by *[Signature]*
Entered Trinidad and Tobago Land Surveyor 13th March 2001.



1271

63

03

1571

15 AUG 2002
Lands and
Surveys
Division