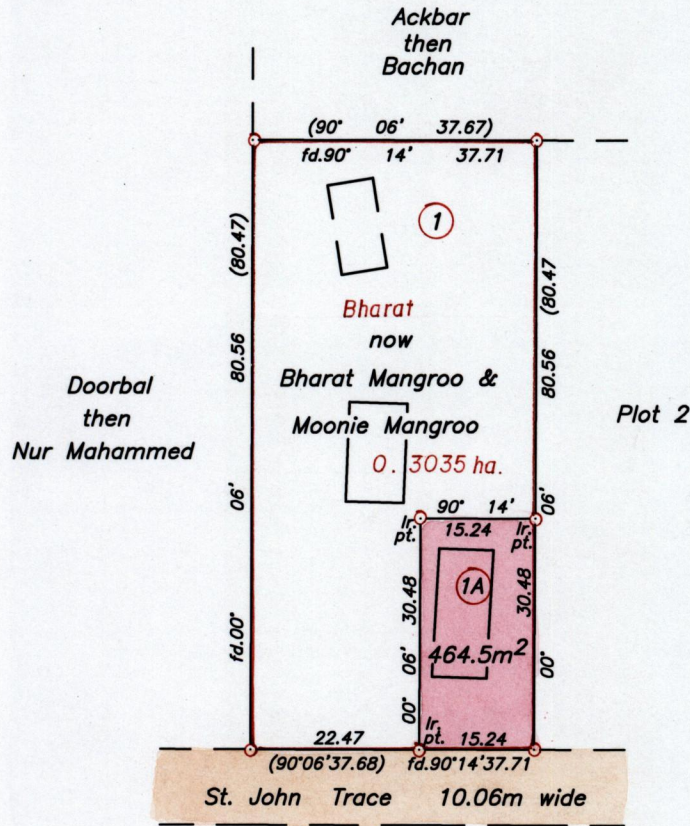


R.P.O. Vol. 28
C.T. Vol. 2191

Fol. 595
Fol. 453

Cadastral Sheet G.12.B. ^{63 D}/_{2/b}
Ward of Siparia
County of St. Patrick
Vide : Bk. 991 Fol. 81



Approved. *[Signature]*
 Director of Surveys
 2007-05

SCALE 1:1000
 Distances are in Metres

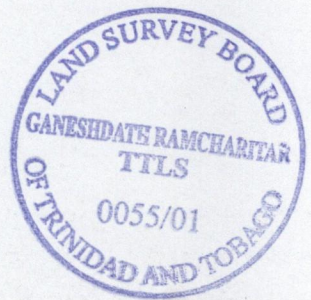
○ Denotes Iron found except otherwise stated.
 Bearings are based on solar observations

Plan of a Parcel of Land coloured pink in the Ward of Siparia
 Containing four hundred and sixty four point five square metres
 Surveyed by me, with due authority in July 11th. 2000

I certify that this plan is correct, in accordance with Rule 25 (1) of the
 Land Surveyors' Regulations 1998.

Checked by *[Signature]* *[Signature]*
 Trinidad & Tobago Land Surveyor

Entered. 29/10/01
 Trinidad & Tobago Land Surveyor 20.01



31 OCT 2001
Lands and
Surveys
Division