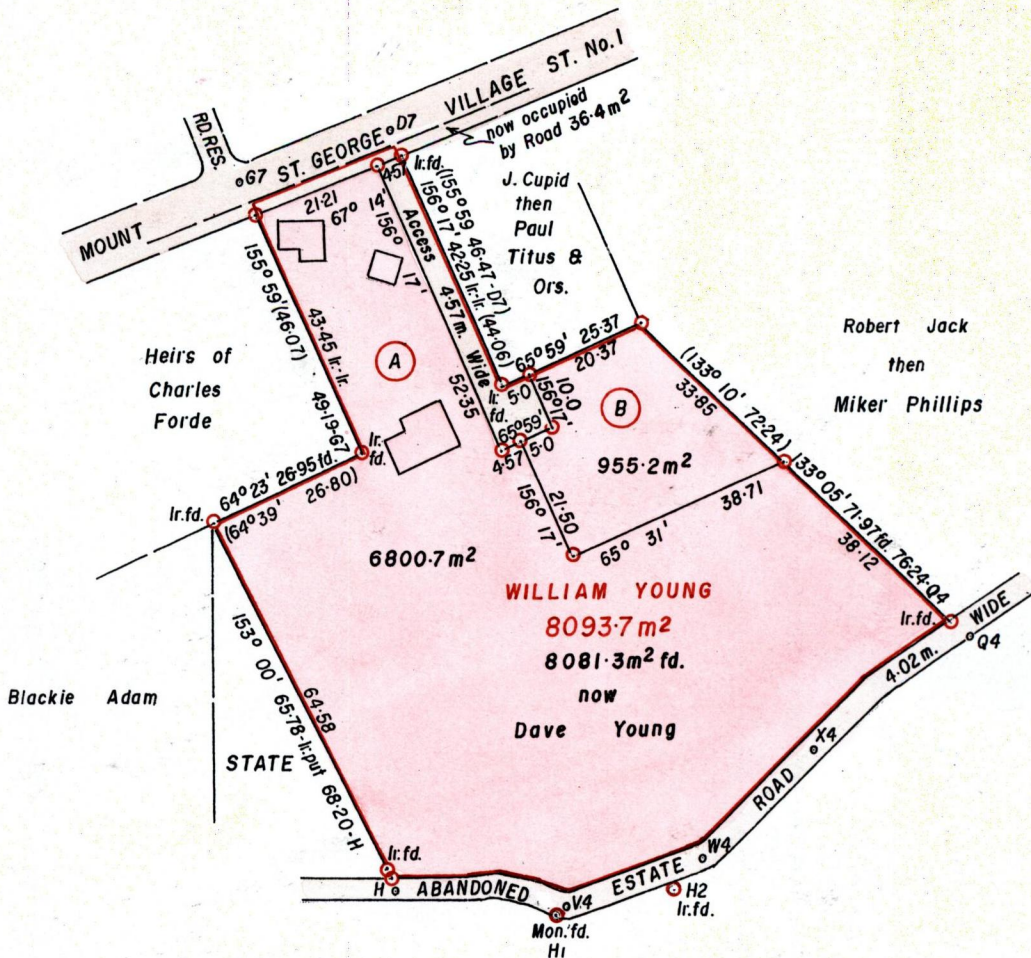


R.P.O. Vol. 756
C.T. Vol.

Fol. 221
Fol.

Ward of Tobago
Parish of St George
Cadastral Sheet I.18.G.



SEE Bk. 694 fol. 283
S.O. 10/33

D7 - G7	250° 35'	25-89
H - V4	96° 28'	28-16
V4 - W4	71° 14'	23-72
W4 - X4	47° 00'	26-25
X4 - Q4	53° 03'	32-08 fd.
H - H1	98° 03'	26-75
H1 - H2	77° 43'	19-83



Approved

[Signature]
Director of Surveys 2003-3-24

○ Denotes Iron put unless otherwise stated

Bearings are Cassini Grid based on Solar Obs.

SCALE 1/1250

Note: To Obtain compass bearings add/subtract minutes

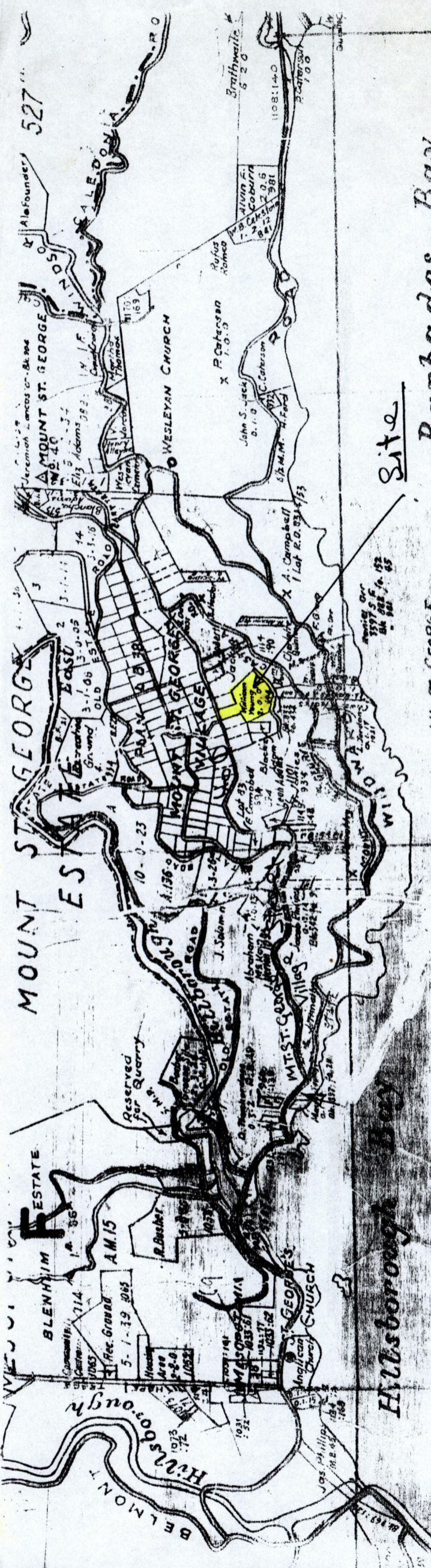
Distances are in metres

PLAN of 2 Parcels of land coloured pink in the Ward of Tobago
Containing together seven thousand seven hundred and fifty-five point nine square metres
Surveyed by me, with due authority, on 15th April 1993
In accordance with Regulation 25 (1), of the Land Surveyors Regulations 1998.
I certify that this plan is correct.

Checked by *[Signature]* 21-3-03

[Signature]
Trinidad and Tobago Land Surveyor

Entered December 2002



Barbados Bay

K

MT. ST. GEORGE

Antigua Tithe 1820' BK 114
Marshall Washington 1814.S.F. 110

UNENTERED PARCELS

W. Chapman Solomon Messrs 1067.
G. A. d'Almeida M. Thomas 9859 & 1119
E. W. A. Campbell
D. Elisha Alexander 0-9-00 852

W. Alexander
2-3-0 852.

J

527

Sheet I.18

K

17

1

5830