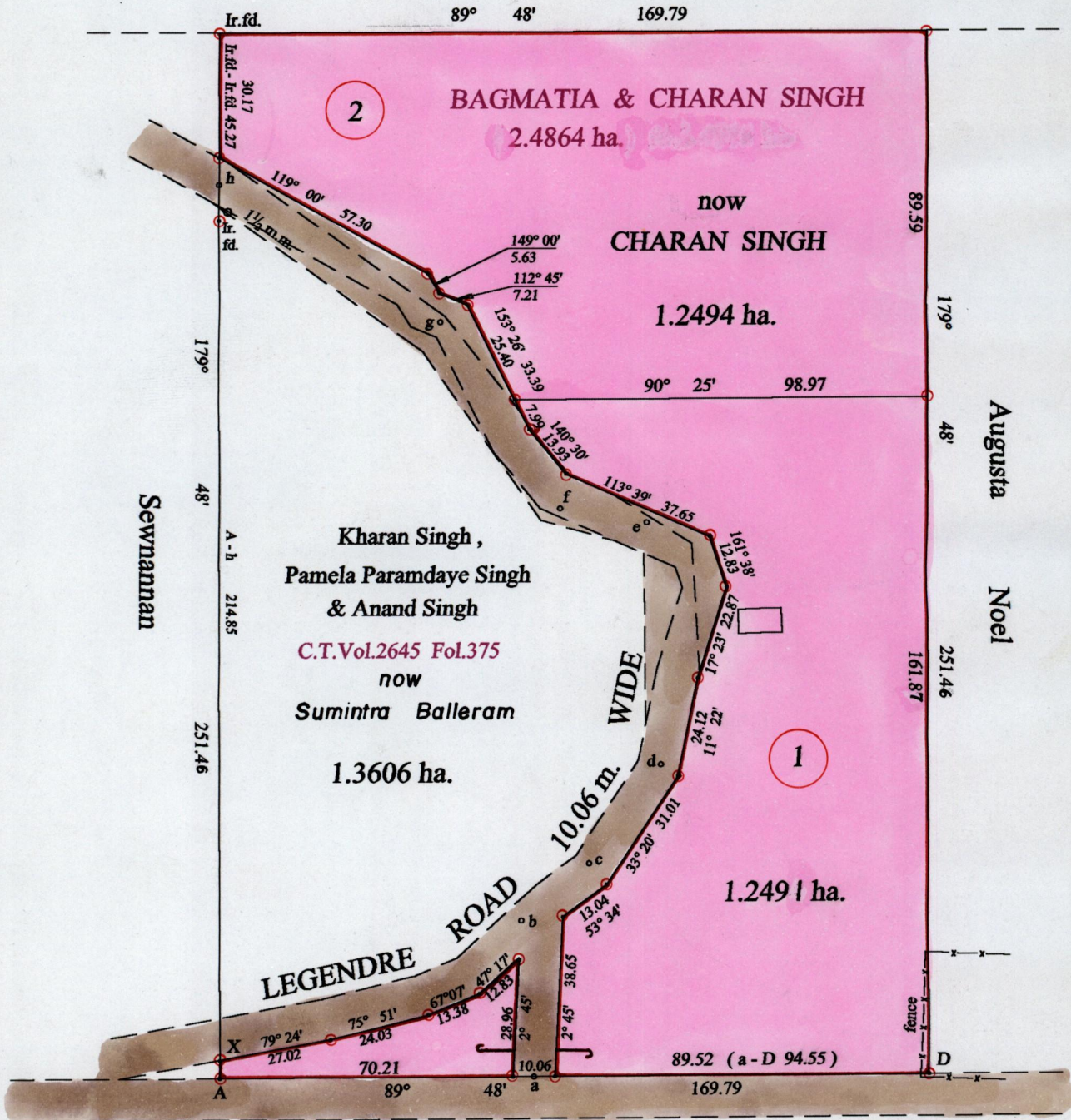


CROWN then Marcelline Roach now Abass



ROAD RESERVE 10.06 m. WIDE now RAJPAUL TRACE

Vide Bk.1117 Fol.218  
 Vide Bk.303 Fol.291  
 Vide S.O.492/08

a - b	355° 15'	37.92	e - f	279° 10'	21.02
b - c	49° 56'	21.22 fd.	f - g	327° 13'	53.31
c - d	35° 57'	29.37	g - h	301° 52'	62.66
d - e	356° 32'	58.24	A - x	359° 48'	4.42

Approved *[Signature]*  
 Director of Surveys 2003.2.24

○ Denotes Iron put except stated otherwise. SCALE : 1:1500  
 Note: Bearings are cassini grid based on solar observations Distances are in metres

PLAN of 2 Parcels of land coloured pink in the Ward of Cocal  
 Containing together two point four nine eight five hectares  
 Surveyed by me, with due authority, in May 1999  
 In accordance with regulation 25 (1) of the Land Surveyors' Regulations 1998,  
 I certify that this plan is correct.

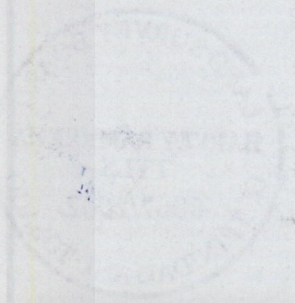
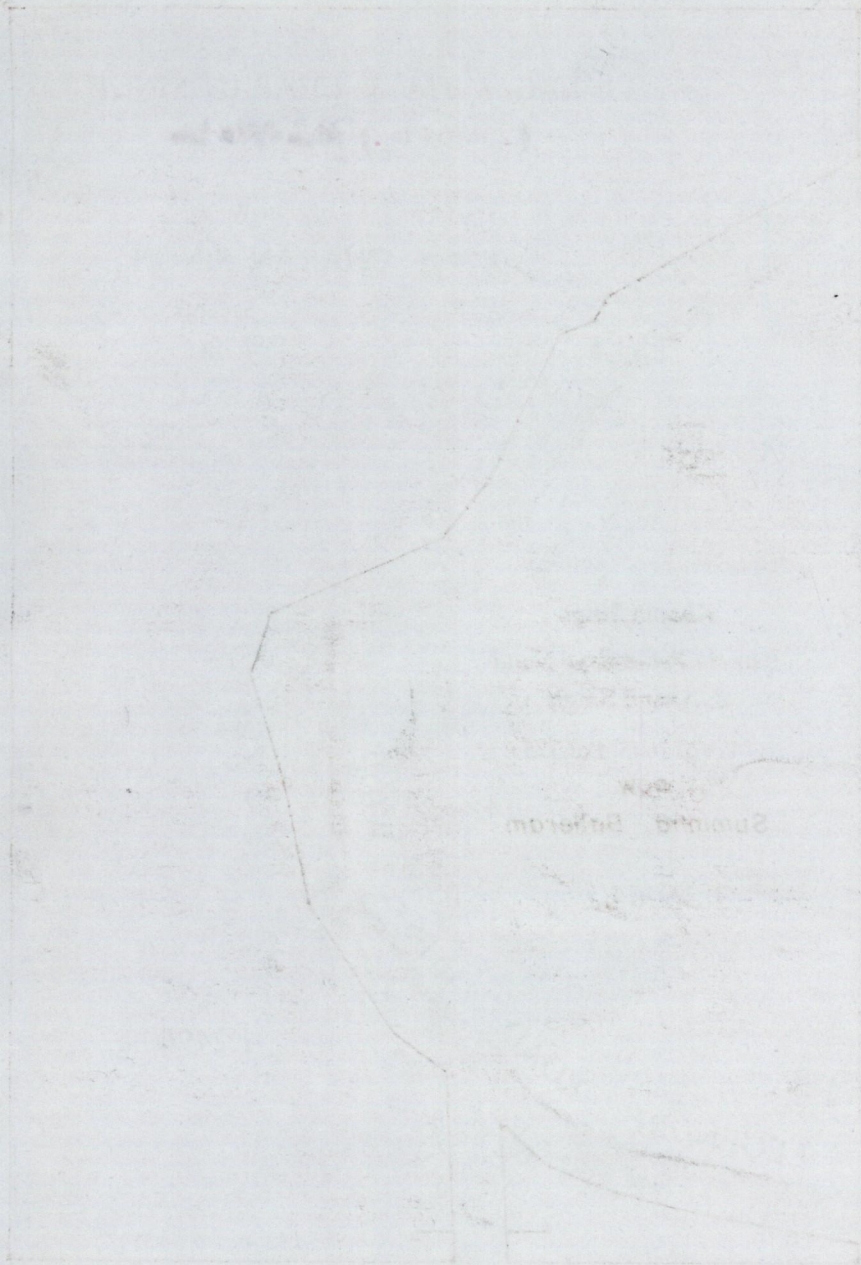
Checked by *[Signature]*

Entered on ..... Trinidad & Tobago Land Surveyor ..... 2002



303

1271



- 1 MAY 2002  
 Lands and  
 Surveys  
 Division