

R.P.O. Vol. 638 Fol. 251

Cadastral Sheet C.16.I. 15E

C.T. Vol. 4336 Fol. 151

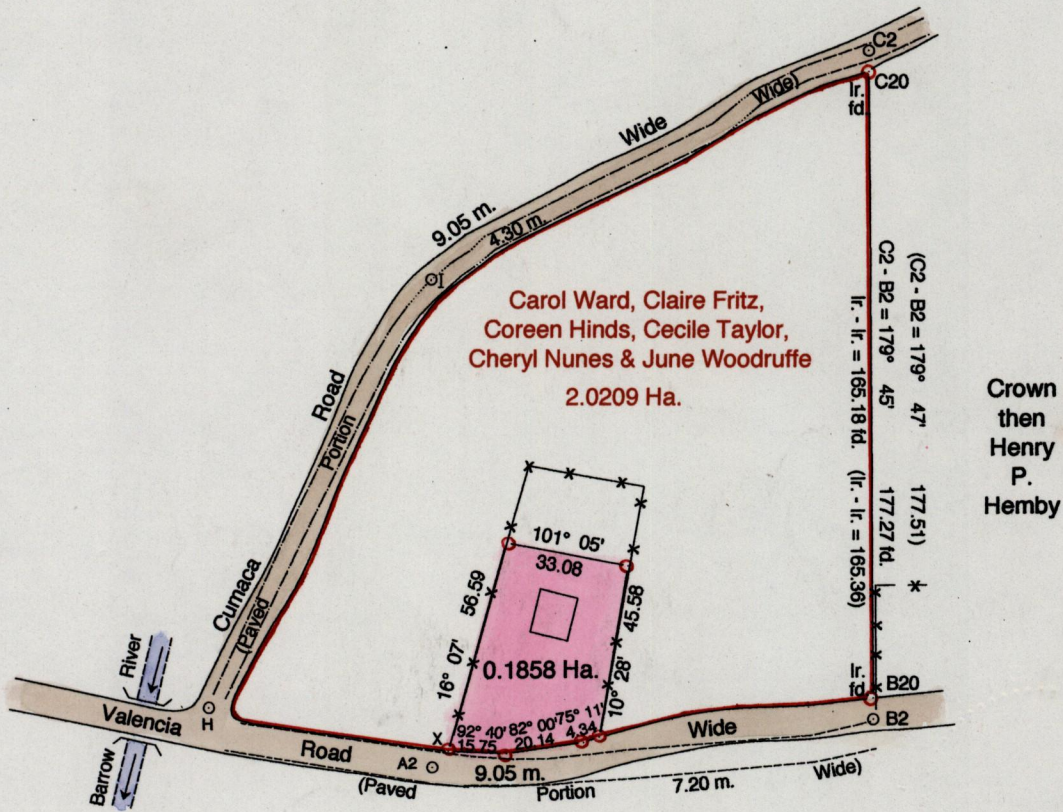
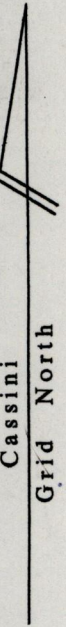
3/d

U.P.R.N. No.

Ward of Valencia

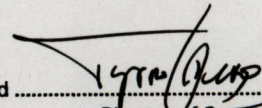
County of St. Andrew

Vide Bk. 584 Fol. 306



Crown then Henry P. Hemby

Line	Brg.	Dist.
H - I	27° 49'	127.84
I - C2	62° 42'	130.62
H - A2	104° 57'	61.90
A2 - B2	84° 17'	117.28
C2 - C20	179° 45'	6.05
B20 - B2	179° 45'	6.04
A2 - X	43° 38'	5.99

Approved   
 Director of Surveys  
 25.12.2005



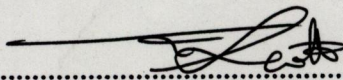
SCALE 1: 2000

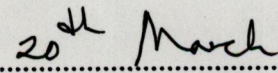
Distances are in metres

○ Denotes Iron Put unless otherwise stated

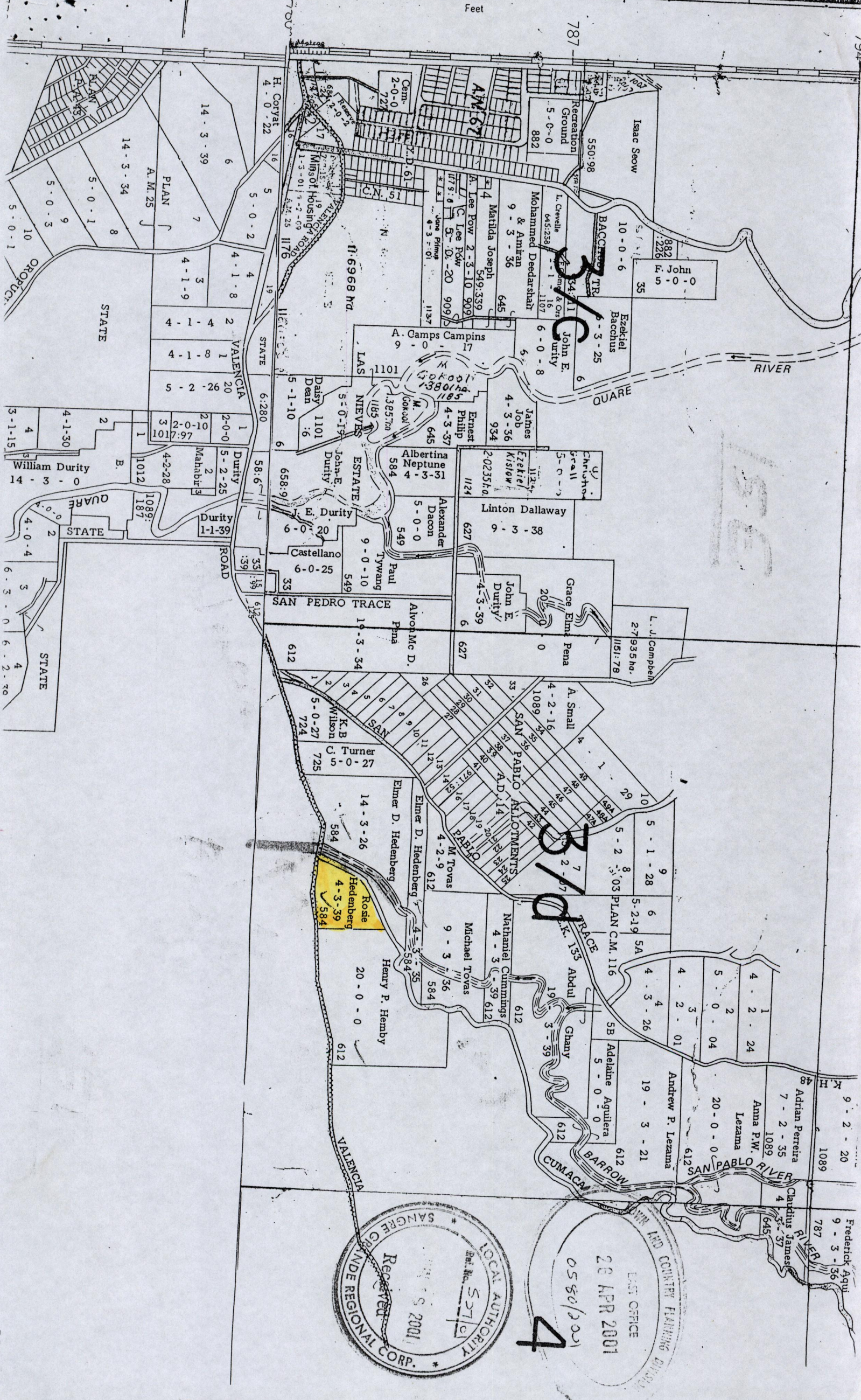
Bearings are Cassini Grid based on Solar Obs.  
To obtain compass bearings add 13 minutes

PLAN of a Parcel of land coloured pink in the Ward of Valencia  
 Containing zero point one eight five eight hectares  
 Surveyed by me, with due authority, in April 2001 at the request of Coreen Hinds and Ors.  
 In accordance with reg. 25 (1) of the Land Surveyors' Regulations 1998  
 I certify that this plan is correct.

Checked by  .....  
 Director of Surveys

Entered on..... Trinidad & Tobago Land Surveyor  20<sup>th</sup> March 2002.....





LOCAL AUTHORITY  
 Received  
 20 APR 2001  
 Ref. No. S27/C1

EAST OFFICE  
 20 APR 2001  
 0550/2001

4

