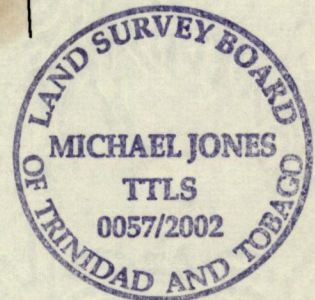
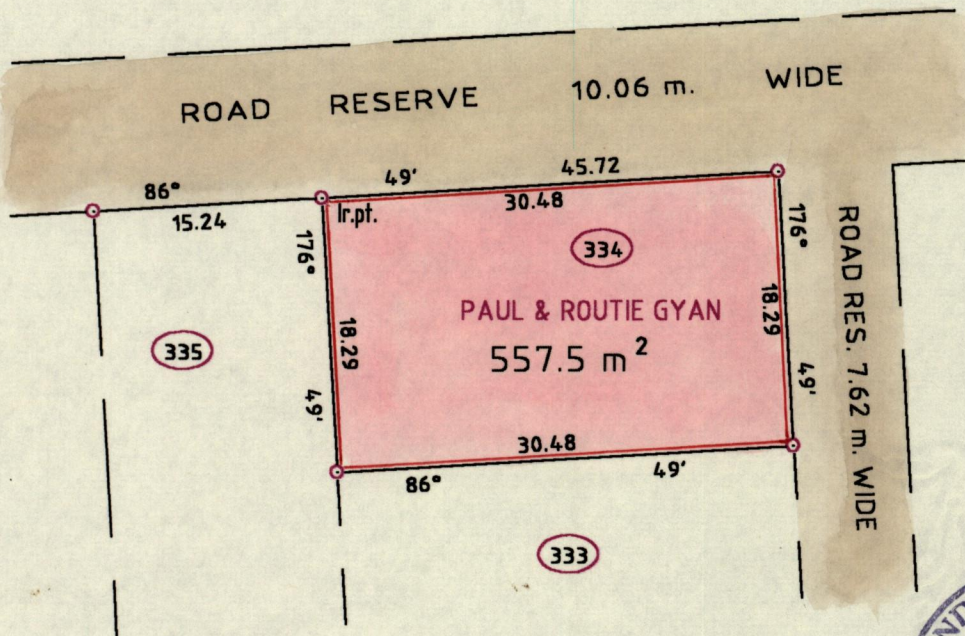
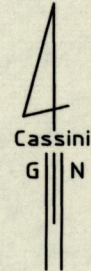


R.P.O. Vol. 30 Fol. 85
C.T. Vol. 3881 Fol. 137

Cadastral Sheet C.21.P. $\frac{25F}{17d}$
Ward of Turure
County of St. Andrew

VIDE: PLAN PE.230



Approved *Lyron Jones*
Director of Surveys
25.10.07.12

SCALE: 1/500
Distances are in Metres

○ Denotes Iron fd. except otherwise stated.
Bearings are based on Solar observations.

PLAN of a parcel of land coloured pink in the Ward of Turure
Containing five hundred and fifty-seven point five square metres.
Surveyed by me with due authority, in October, 2001.

In accordance with Reg. 25(1) of the Land Surveyors' Regulations 1998, I certify that this plan is correct.

Checked by *D. De 2002-7-11*

Michael Jones

Entered on.....

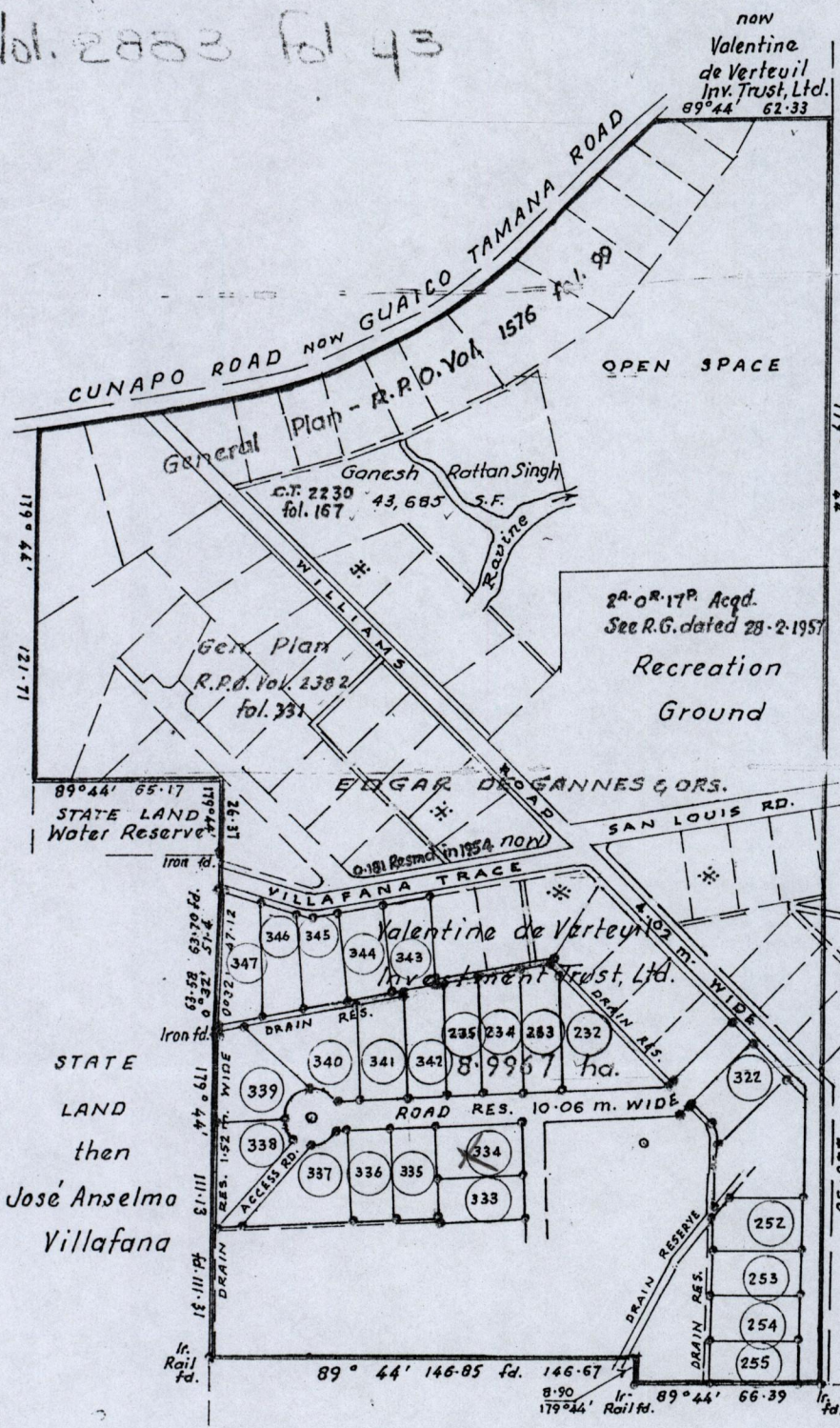
Trinidad & Tobago Land Surveyor.....6-07-2001.....2001

12 JUL 2002
Lands and
Surveys
Division

Vol. 2003 fol 43

G. N. (Casini)

Joseph Masiah Damree



STATE LAND then José Anselma Villafana

F. Thuej now Geo. William

STATE LAND
 Hypolite Cornilliac
 then José Anselmo Villafana

now
 2^a OR 17th Acqd. See R.G. dated 29-2-1957
 Recreation Ground
 Valentine de Verteuil Investment Trust, Ltd.

Approved

H.B. Joubert
 Director of Surveys
 24.3.08

PE 230

SCALE: 1/2500
 Distances are in metres

Note: (1) To obtain Compass bearings add 16 minutes.
 (2) Iron put at each corner except otherwise indicated.

PLAN of 24 Lots of Land coloured pink, in the Ward of Turure

Surveyed by me, with due authority, in January 1983.

I certify that I have complied with Rule 76 under Sec. 14 (2)(d) of the Land Surveyors Ordinance 1952, and that this plan is correct.

Checked by *H.B. Joubert* 8/4/03/08

Entered on _____

Leslie G. Skerratt
 Land Surveyor, Trinidad. 14th April 1983

