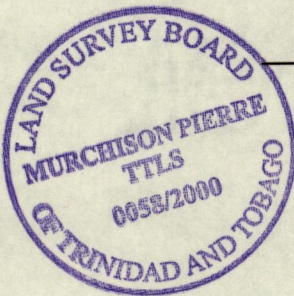
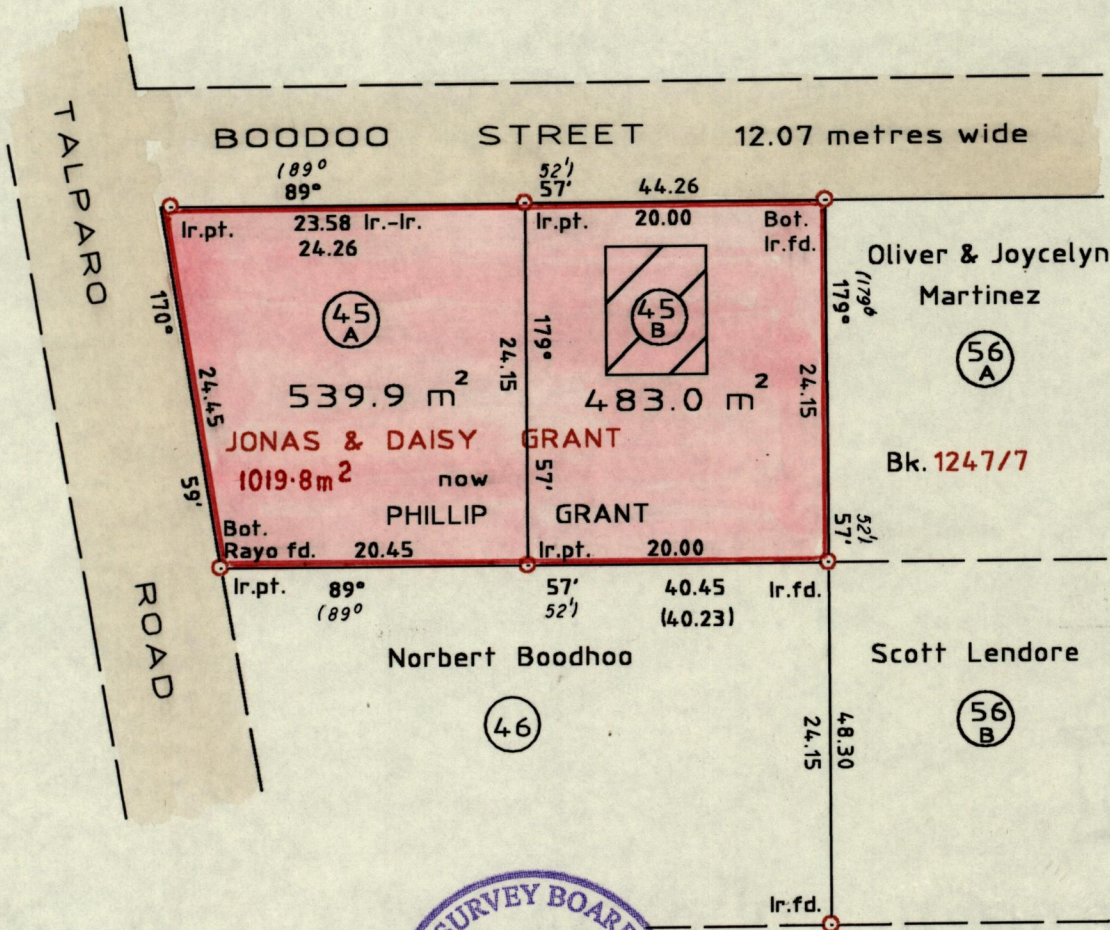
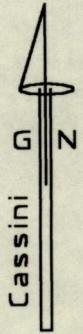


R.P.O. Vol. 21 Fol. 113  
C.T. Vol. 3415 Fol. 55

Ward of San Rafael  
County of St. George  
Cadastral Sheet D5E, 24F/47c



MC-5  
18-11-00

Approved [Signature]  
Director of Surveys.  
2002.12.04

Scale: 1/500  
Distances are in metres

Bearings are based on Solar observations.  
To obtain compass bearings add 8 minutes  
PLAN of two Parcels of land coloured pink in the Ward of San Raphael  
Containing together one thousand and twenty two point nine sq. metres.  
Surveyed by me, with due authority, in November, 2000.  
In accordance with Reg. 25(1) of the Land Surveyors' Regulations 1998, I certify that this plan is correct.

Checked by Att 02.11.13  
Entered on .....

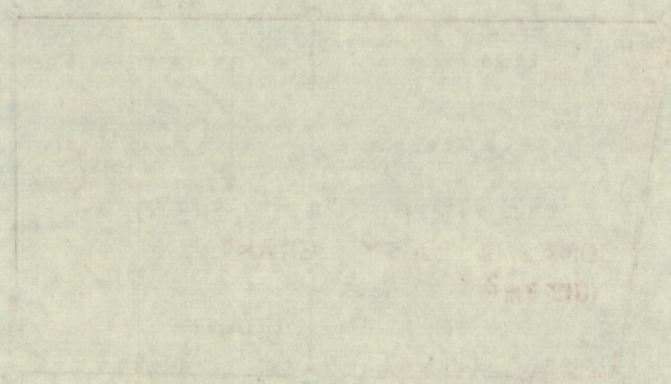
Murchison Pierre  
Trinidad & Tobago Land Surveyor 22<sup>nd</sup> November, 2000



008

17571

EN 100 15  
100 15 100 15



WENT 59061

OS 12 110

5 JUN 2002  
Lands and  
Surveys  
Division

1271/209