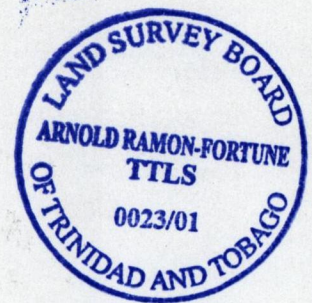
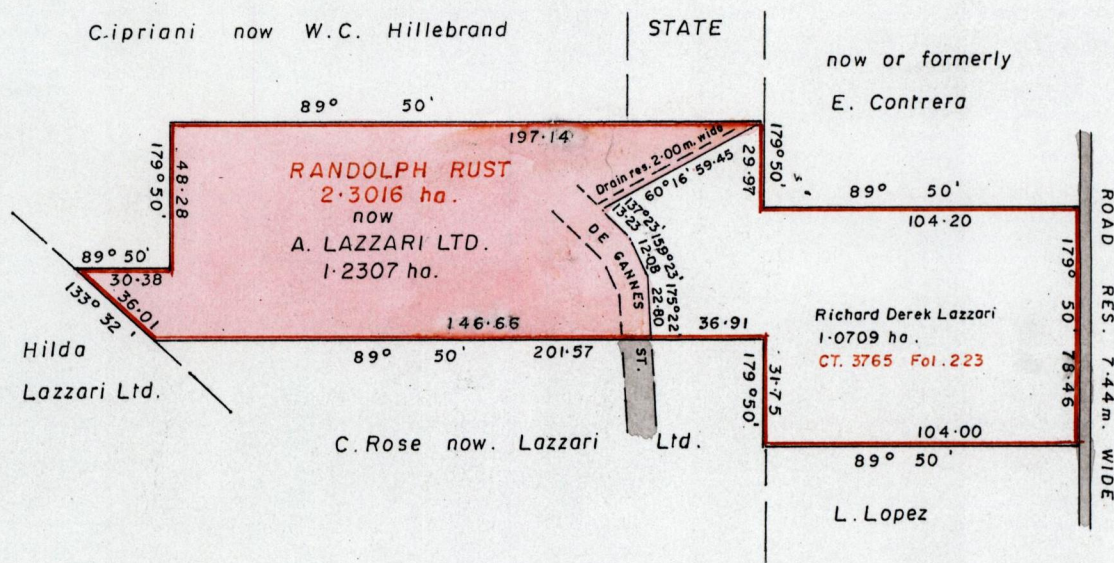
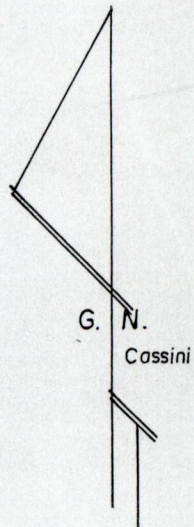


R.P.O. Vol. 498 Fol. 315  
C.T. Vol. Fol.  
U.P.R.N. No.

Borough ~~Word of~~ Arima  
County of St. George  
Cadastral Sheet B.19.P.  $\frac{24c}{1/a8b}$



Approved by  
*[Signature]*  
Director of Surveys  
15/12/07 '03

SCALE:- 1 / 2500  
Distances are in metres

Bearings are based on Solar Observations  
Note: To obtain compass bearings add/ subtract minutes

This is a true copy of a diagram of two point three zero one six hectares originally granted to Randolph Rust shewing a portion coloured pink and containing one point two three zero seven hectares being the remainder after one (1) previous transfer of another portion of land

In accordance with Regulation 25 (1) of the Land Surveyors' Regulations 1998, I certify that this plan is correct.

Checked by *Melis 27 June 02*  
Entered on.....  
*Arnold Ramon Fortune TTLS*  
15th NOVEMBER 2001  
Trinidad & Tobago Land Surveyor.....19





15 NOV 2001  
Lands and  
Surveys  
Division