

1271

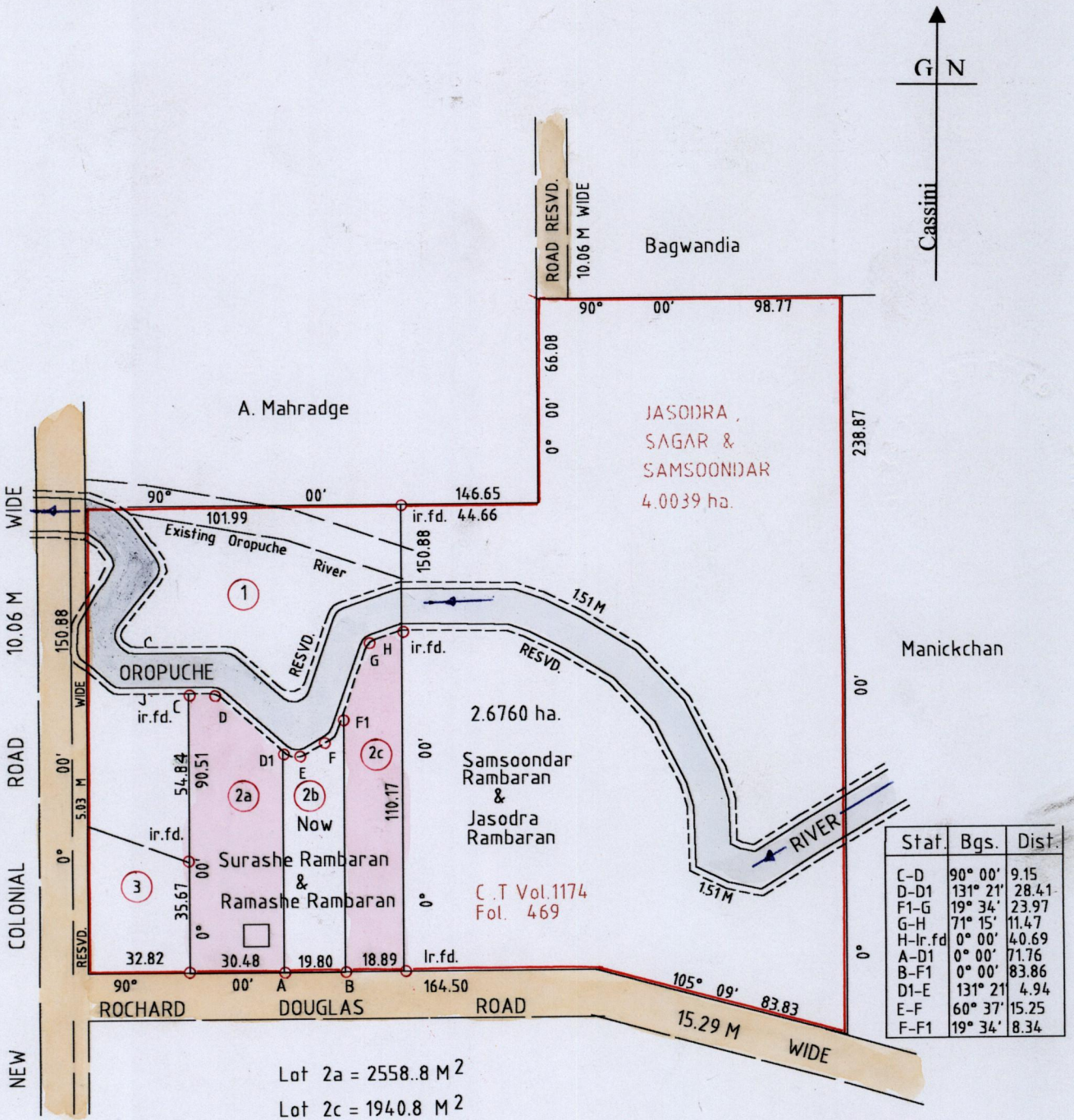
1837

R.P.O Vol. 422 Fol 163

C.T Vol. 1174 Fol. 451

Bk. 1249 Vol. 2 Fol. 71
Bk. 1053 Vol. 2 Fol. 245

Ward of Naparima
County of Victoria
Cadastral Sheet G 14 B 64D
1/b



Lot 2a = 2558.8 M²
Lot 2c = 1940.8 M²



Bearings are CASSINI GRID based on solar obs.

○ Denotes iron put except otherwise stated

Approved

[Signature]
 Director of Surveys
 2002.12.10

Note: To obtain compass bearings add/subtract minutes Distances are in metres

SCALE 1: 2000

PLAN of 2 Parcels of land coloured pink in the Ward of Naparima
Containing Together four thousand four hundred and ninety nine point six square metres

Surveyed by me, with due authority, in April 2000

In accordance with regulation (25) (1) of the Land Surveyors Regulations 1998 I certify that this plan is correct.

Checked by *[Signature]*

Entered *[Signature]* Trinidad and Tobago Land Surveyor *[Signature]* 2002



21 AUG 2002
Lands and
Surveys
Division