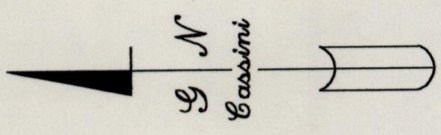


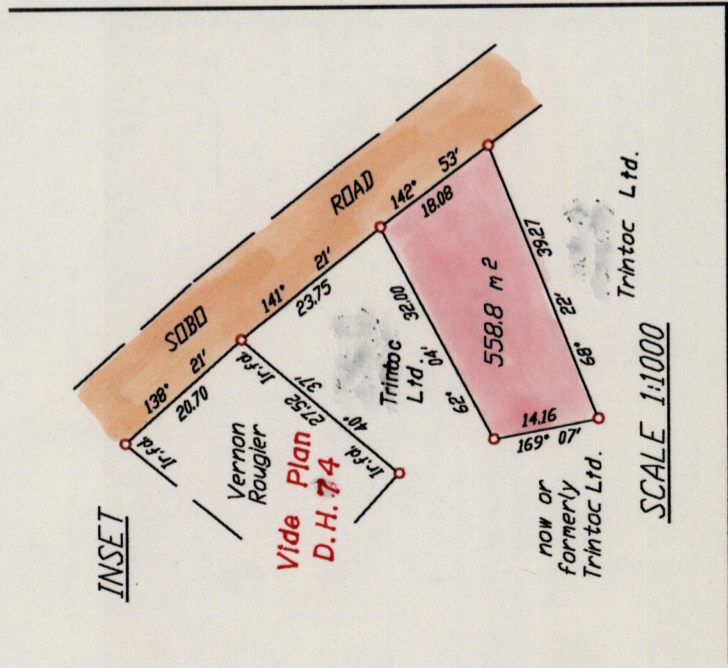
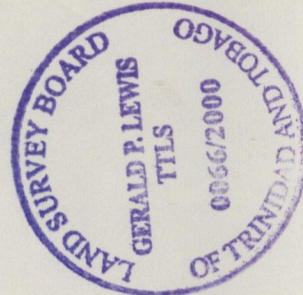
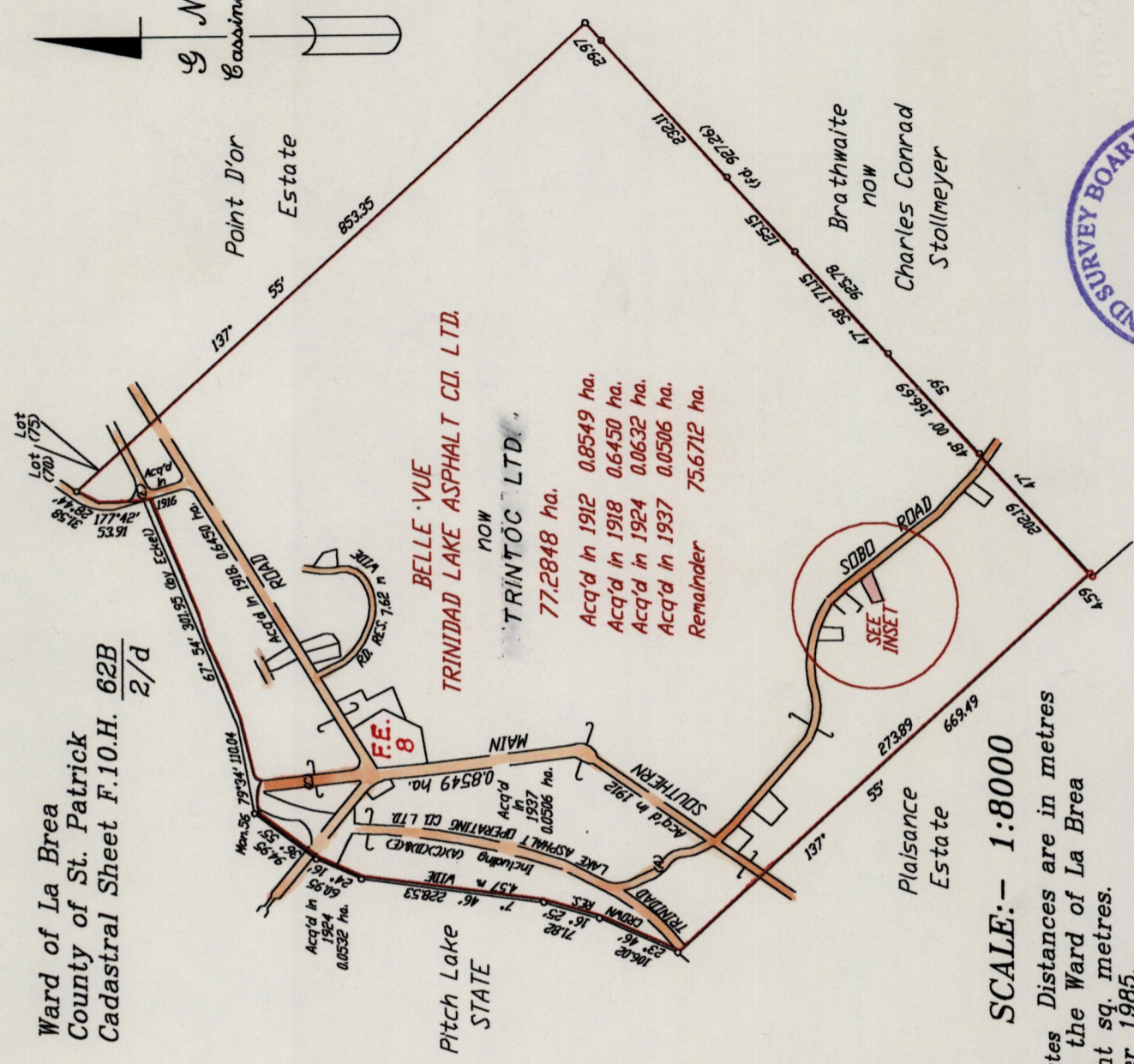
PLAN K.I.13



Ward of La Brea
County of St. Patrick
Cadastral Sheet F.10.H. 62B
2/d

Fol. 65

R.P.O. Vol.
C.T. Vol. 63
U.P.R.N.



SCALE:- 1:8000

Distances are in metres
10 minutes in the Ward of La Brea
pink point eight sq. metres.

Containing five hundred and fifty eight point eight sq. metres.
Surveyed by me, with due authority, in September 1985.
In accordance with Regulation 25 (1) of the Land Surveyors' Regulations 1998,
I certify that this plan is correct.

Approved *[Signature]*
Director of surveys 12.11.00

○ Denotes Iron put, except otherwise stated.
Bearings are based on Solar Observations
Note: To obtain compass bearing subtract 10 minutes

Checked by *[Signature]*
Entered..... Trinidad and Tobago Land Surveyor..... 5th September 1985

