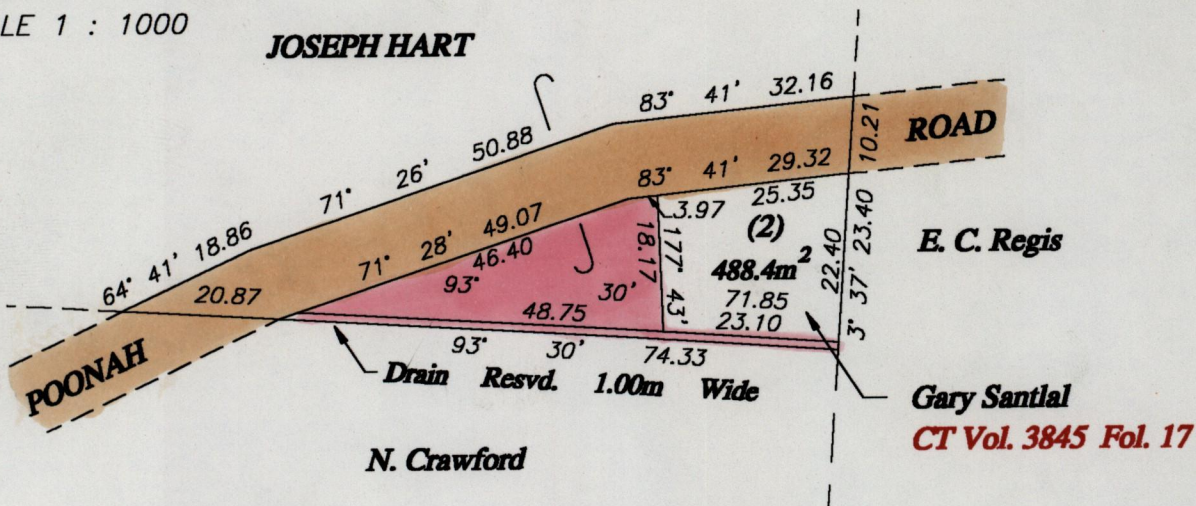


RPO Vol. Fol.
CT. Vol. 3505 Fol. 115

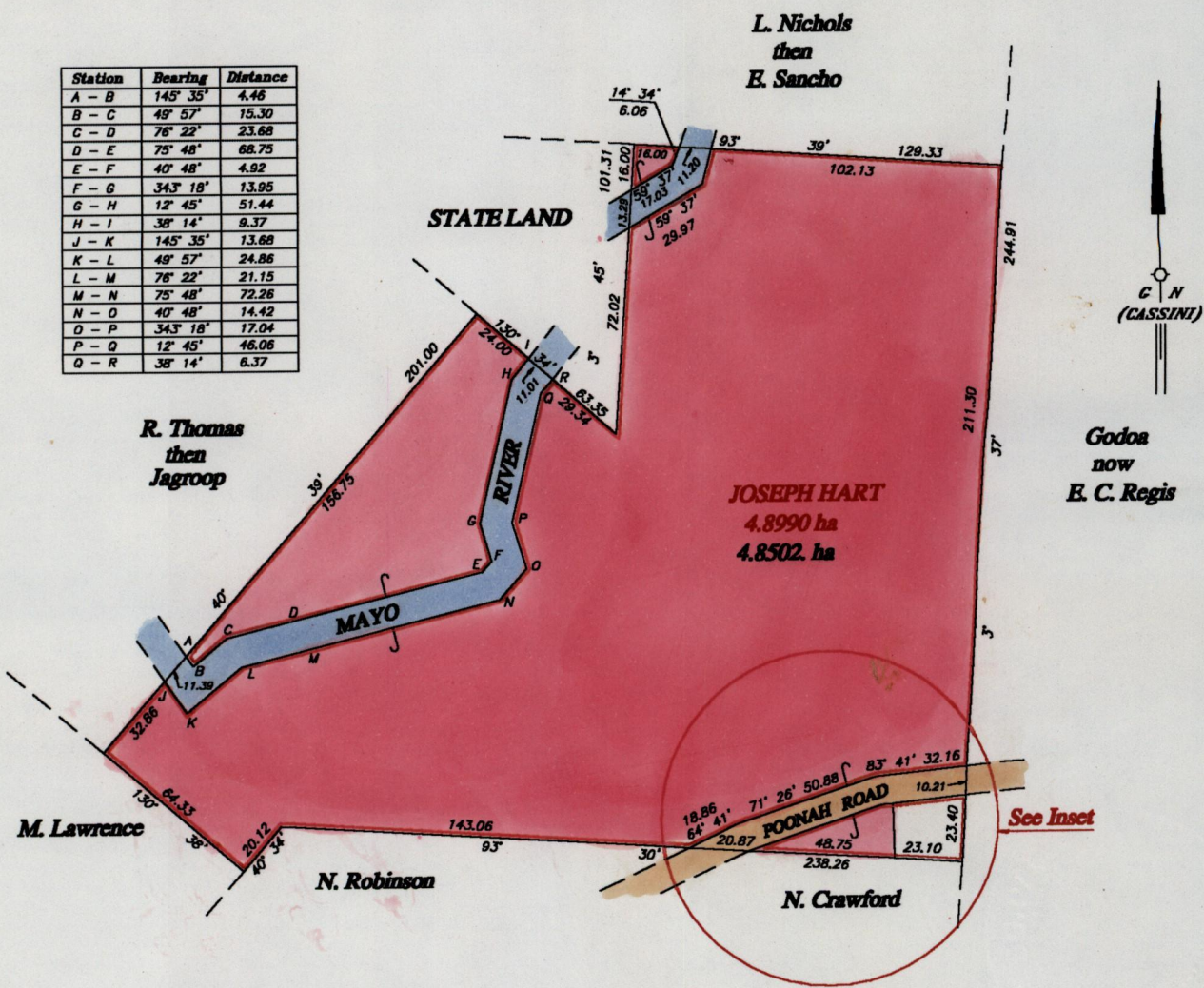
1271

Ward of Pointe A Pierre
County of Victoria
Cadastral Sheet (D.23.F), 54A
1/b

INSET
SCALE 1 : 1000



Station	Bearing	Distance
A - B	145° 35'	4.46
B - C	48° 57'	15.30
C - D	76° 22'	23.68
D - E	75° 48'	68.75
E - F	40° 48'	4.92
F - G	343° 18'	13.95
G - H	12° 45'	51.44
H - I	38° 14'	8.37
J - K	145° 35'	13.68
K - L	49° 57'	24.86
L - M	76° 22'	21.15
M - N	75° 48'	72.26
N - O	40° 48'	14.42
O - P	343° 18'	17.04
P - Q	12° 45'	46.06
Q - R	38° 14'	6.37



Approved

[Signature]
Director of Surveys
2012.12.07

Ref Bk. 1233 : 81

SCALE 1 : 2500

Note : To obtain compass bearing subtract/add 0 minutes.

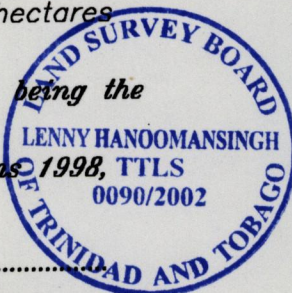
Distances are in metres

This is a true copy of a diagram of four point eight nine nine zero hectares originally transferred to Joseph Hart shewing a portion coloured pink and containing four point eight five zero two hectares being the remainder after one (1) previous transfer of a portion of the land. In accordance with Regulation 25 (1) of the Land Surveyors' Regulations I certify that this plan is correct.

Checked by *M.I.* 28-11-02

[Signature]
Trinidad & Tobago Land Surveyor
14/9/2001

Entered on



134

127

