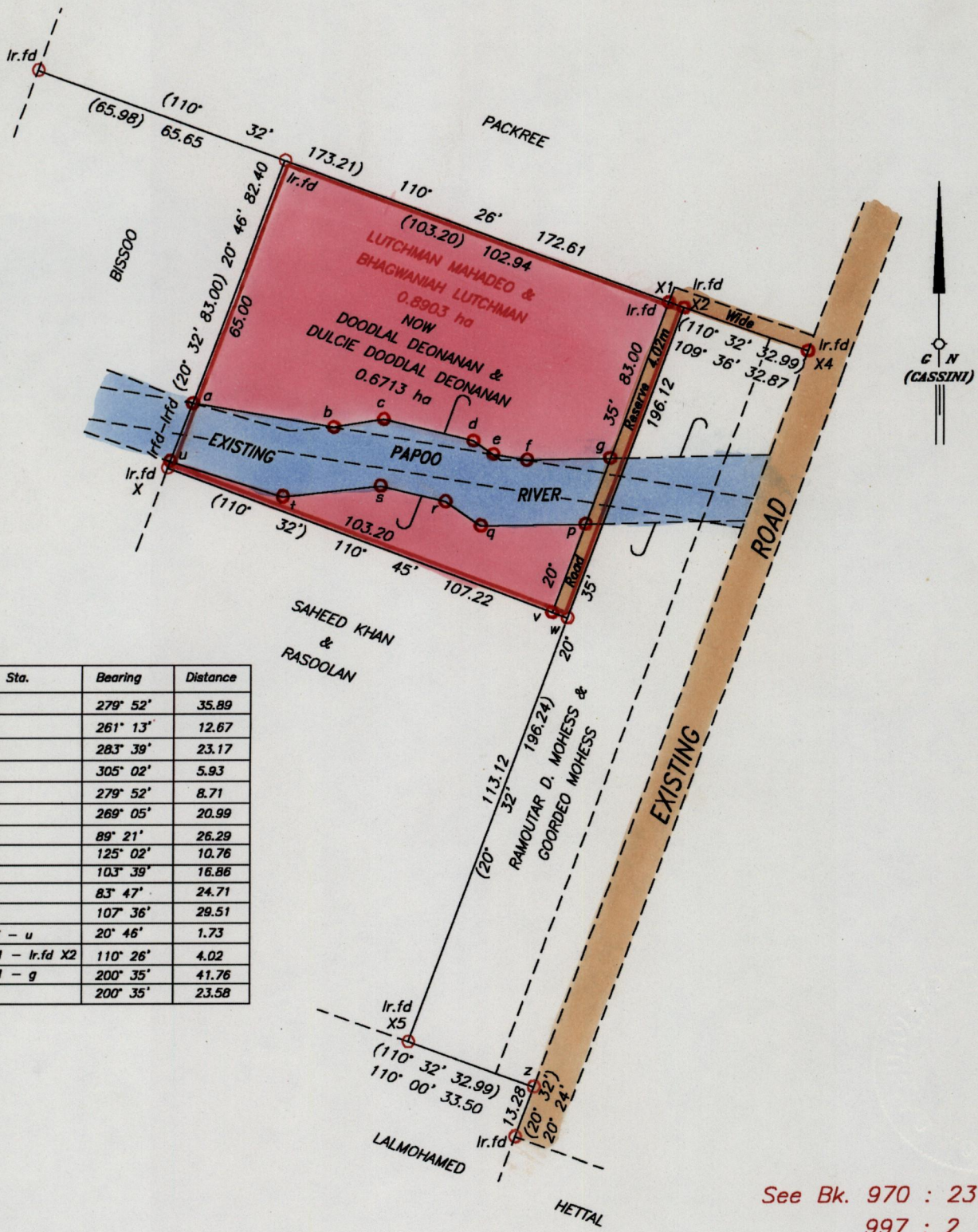


1271

1331

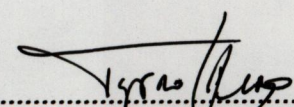
RPO Vol. 43 Fol. 209
CT. Vol. 3191 Fol. 97

Ward of Naparima
County of Victoria
Cadastral Sheet (G.13.C), $\frac{63F}{1/b}$



Sta. - Sta.	Bearing	Distance
b - a	279° 52'	35.89
c - b	261° 13'	12.67
d - c	283° 39'	23.17
e - d	305° 02'	5.93
f - e	279° 52'	8.71
g - f	269° 05'	20.99
q - p	89° 21'	26.29
r - q	125° 02'	10.76
s - r	103° 39'	16.86
t - s	83° 47'	24.71
u - t	107° 36'	29.51
Ir.f.d. X - u	20° 46'	1.73
Ir.f.d. X1 - Ir.f.d. X2	110° 26'	4.02
Ir.f.d. X1 - g	200° 35'	41.76
p - v	200° 35'	23.58

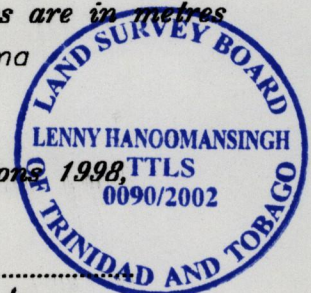
See Bk. 970 : 23
997 : 2
Plan K.T.14

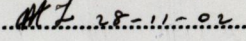
Approved 
Director of Surveys
26/2.12.07

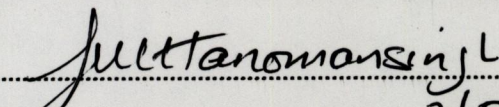
○ Denotes Iron put except stated otherwise.
Bearings are Cassini Grid based on Solar Observations.
Note : To obtain compass bearing subtract 2 minutes
Plan of several Parcels of land coloured pink in the Ward of Naparima
Containing zero point six seven one three hectares
Surveyed by me with due authority, in March 2001
In accordance with Regulation 25 (1) of the Land Surveyors Regulations 1998,
I certify that this plan is correct.

SCALE 1 : 1500

Distances are in metres



Checked by 



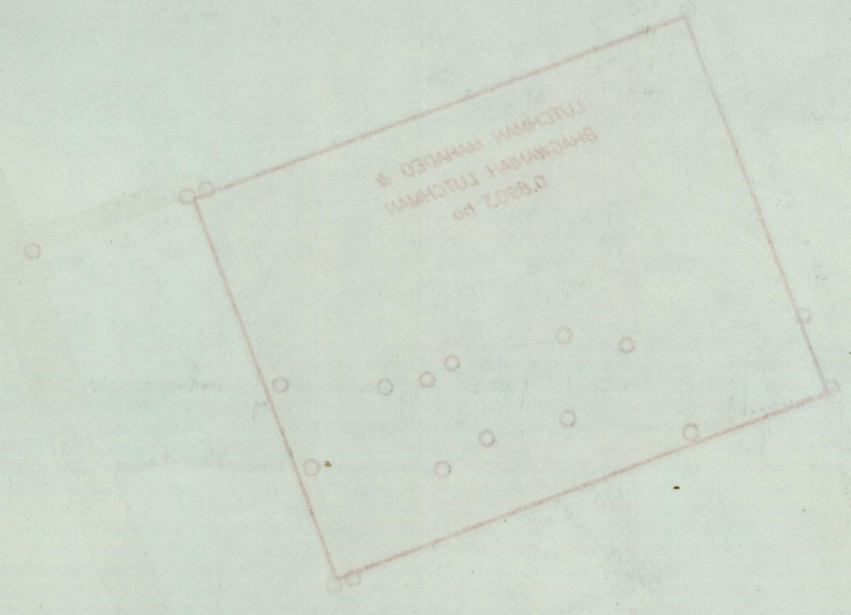
Entered on

Trinidad & Tobago Land Surveyor. 2/8/2001

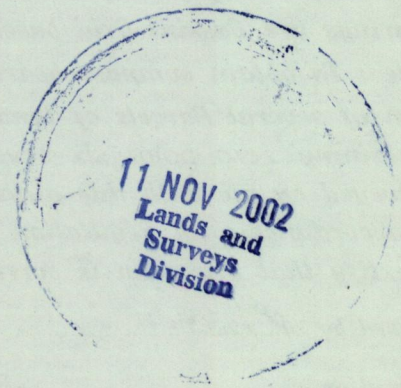
1331
050

1571

NOV 11 2002



See BK 970 - 22
987 2
Plan KAT 14



1810