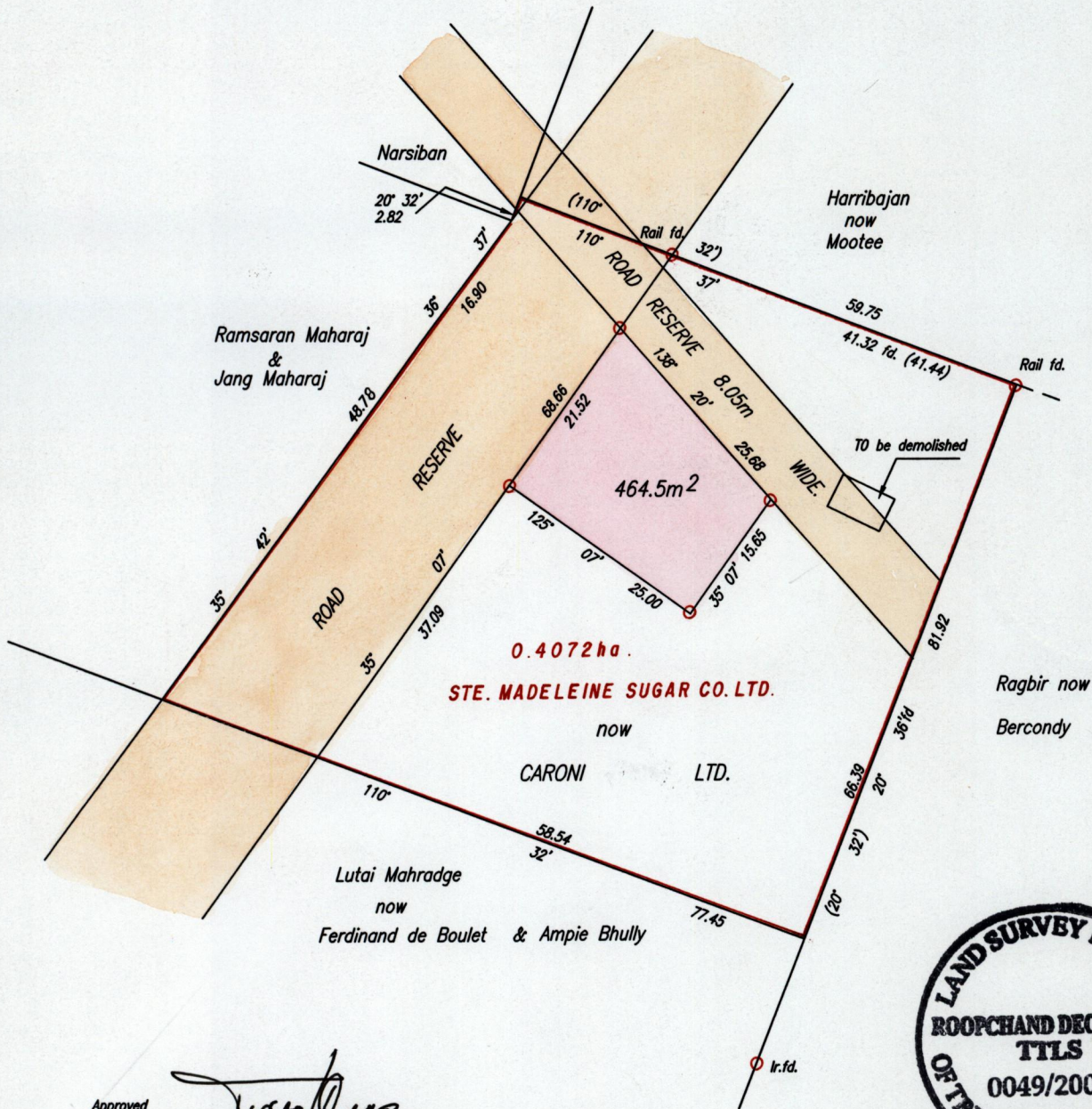


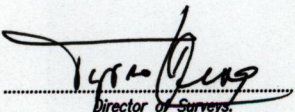
1271

163

R.P.O. Vol. 27 Fol 9  
C.T.Vol. 535 Fol 301  
Vide Bk. 720 fol. 136

Ward of Naparima  
County of Victoria  
Cadastral Sheet G.8.N. 63C  
3/d



Approved   
 Director of Surveys  
 2002.12.04

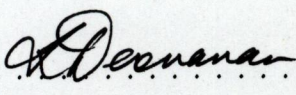


SCALE 1:750  
 Distances are in Metres

○ Denotes Iron put except otherwise stated.  
 Bearings are based on Solar Observations  
 Plan of a Parcel of land coloured pink in the Ward of Naparima  
 Containing four hundred and sixty four point five square metres.  
 Surveyed by me, with due authority, in April, 2001.  
 In accordance with Reg. 25(1) of the Land Surveyors' Regulations 1998,  
 I certify that this plan is correct.

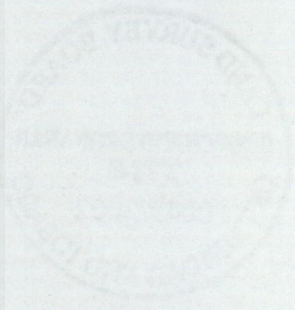
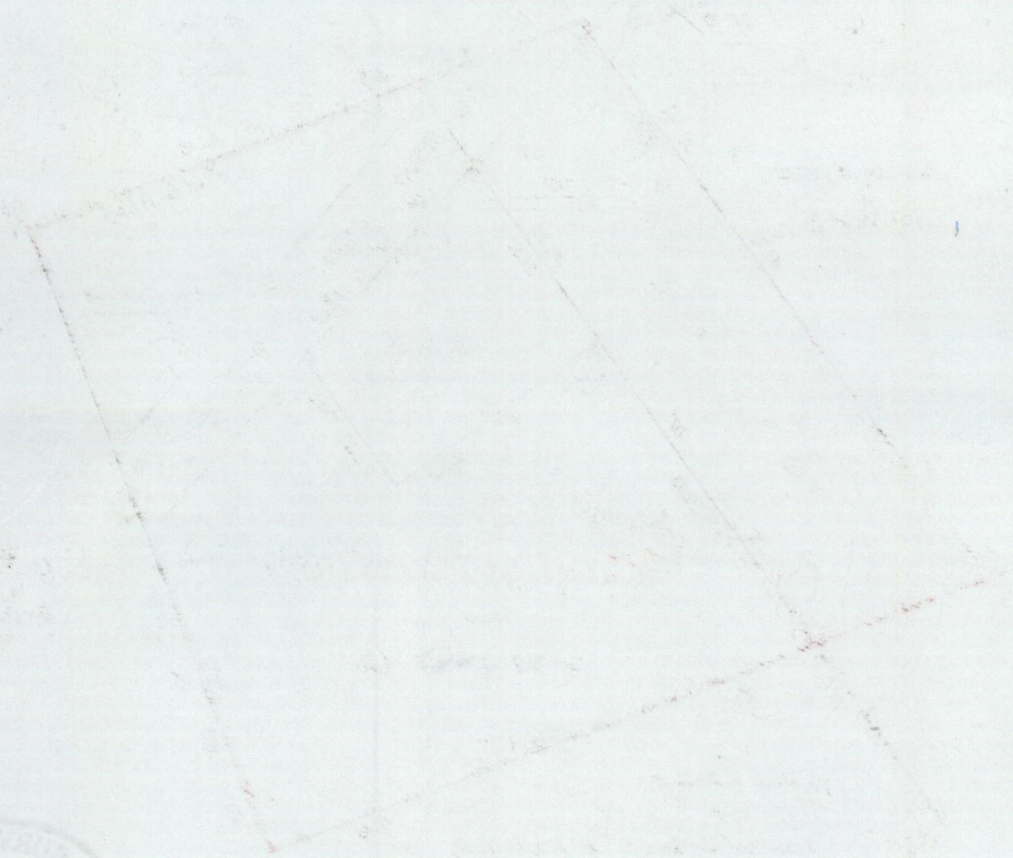
Checked by 02/14/02 M.M.

Entered on.....

  
 Trinidad & Tobago Land Surveyor 22<sup>nd</sup> January 2002  
 PATH = EV700 C:\Drawings\DBSingh.dwg.

103

1271



22 FEB 2002  
Lands and  
Surveys  
Division