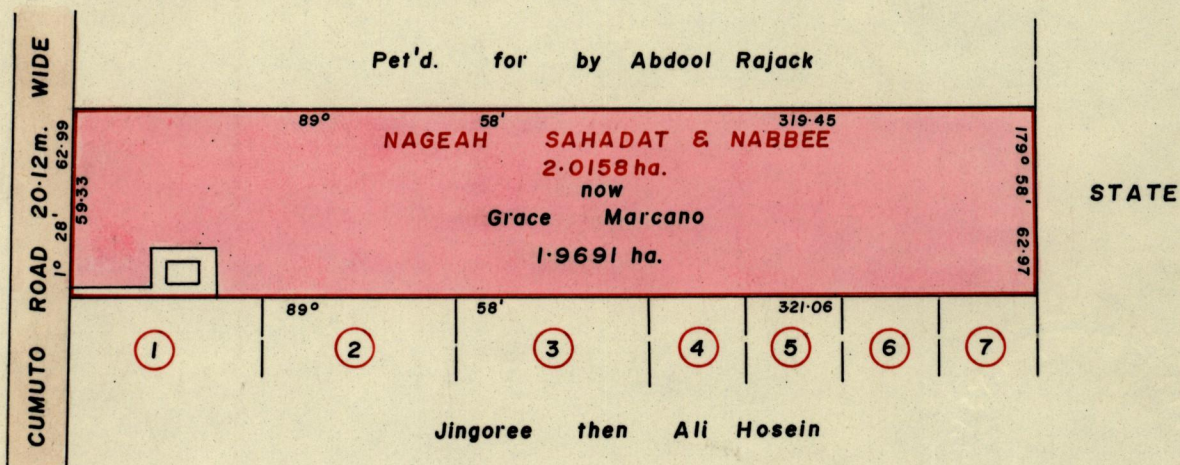
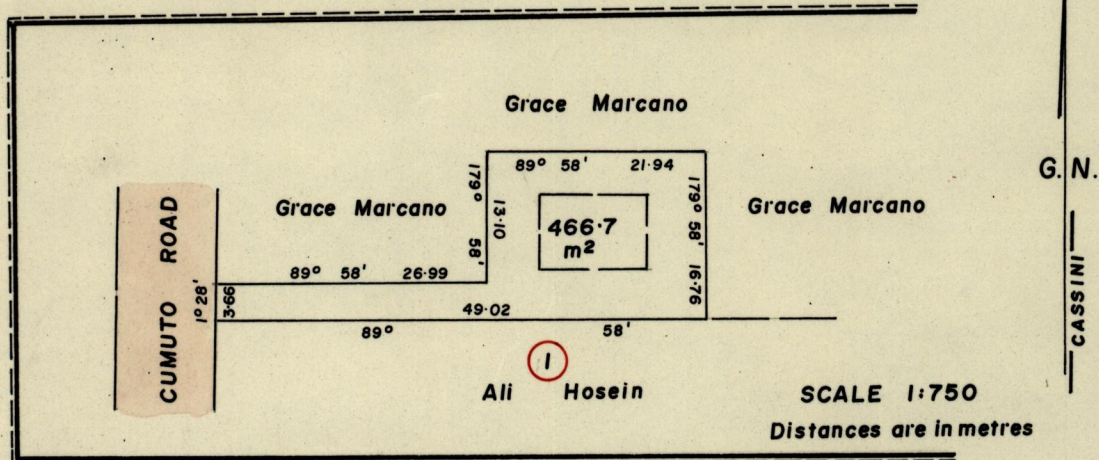


R.P.O. Vol. 424 Fol. 567  
C.T. Vol. 3523 Fol. 289  
U.P.R.N. No.

Ward of Savana Grande  
County of Victoria  
Cadastral Sheet G.14. D.  $\frac{64E}{1/a}$



See Bk. 383 : 16  
See Bk. 1117 : 143  
See Bk. 1196 Vol.2 : 78

Hardath Persad & Kamla Persad  
466.7 m<sup>2</sup> C.T. Vol. 4051 Fol. 387



Approved by

*[Signature]*  
Director of Surveys  
2002.12.07

SCALE:- 1:2500  
Distances are in metres

Note: To obtain compass bearings add/ subtract minutes

This is a true copy of a diagram of Two Point Zero One Five Eight Hectares originally transferred granted to NAGEAH SAHADAT AND NABBEE shewing a portion coloured pink and containing One Point Nine Six Nine One Hectares being the remainder after one previous transfer of another portion of land

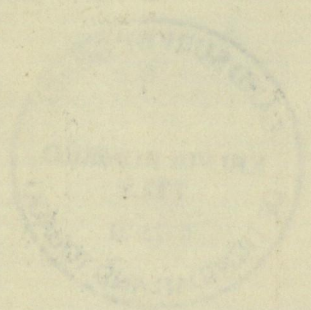
In accordance with Reg. 25 (1) of the Land Surveyors' Regulations 1998, I certify that this plan is correct.

Checked by M.M. 3/12/02

Entered on.....

*[Signature]*  
Trinidad & Tobago Land Surveyor 30<sup>th</sup> August 2001





04 SEP 2001  
Lands and  
Surveys  
Division



64E/1/a

807

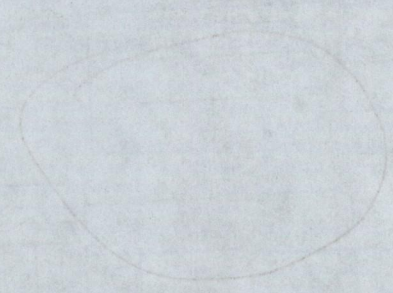
814







Handwritten scribbles or faint markings at the top of the page, possibly including the number '11' and some illegible characters.



A small, faint red mark or scribble near the bottom center of the page.

