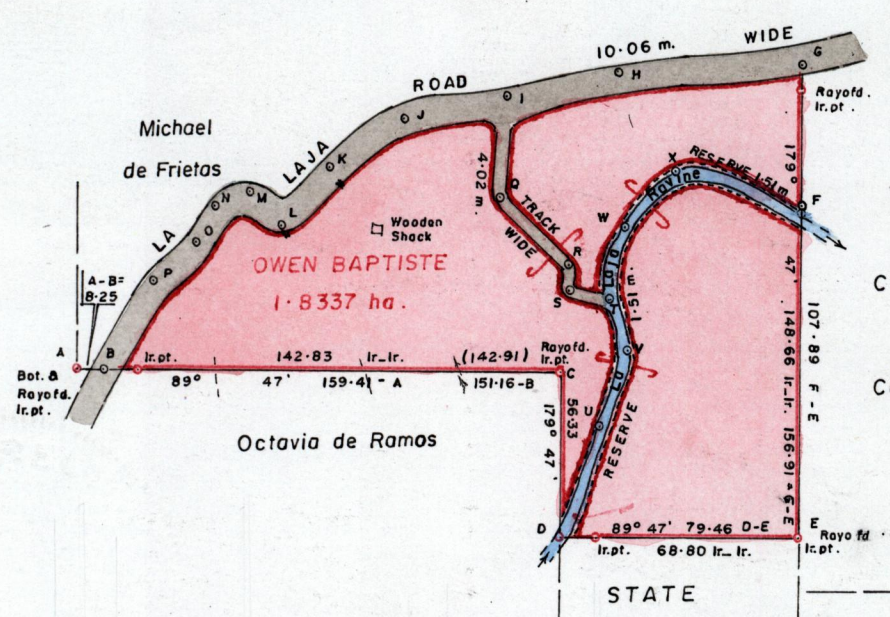


R.P.O. Vol. 487 Fol. 263
C.T. Vol. 4020 Fol. 407

Ward of Blanchisseuse
County of St. George
Cadastral Sheet B.15.A. 14C
2/a



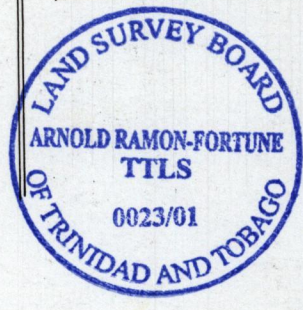
CROWN
then
Celestine Charles
G N
Cassini

3-82	72-30	6-24
3-42	64-37	6-64
5-03	60-35	5-03
5-03	46-27	5-03
	37-46 = I	
6-64	24-14	3-42
5-03	11-47	5-03
	H	257° 47'
6-04	59-22	4-03
6-04	20-12	4-03
	G	266° 57'
	E	79-46
	8-45	
	4-63	
	2-01	
	D	89° 47'
	D	56-33
	47-27	
	C	179° 47'

5-03	B	34-70	5-03
	P	210° 57'	
5-03	P	19-51	5-03
	O	227° 47'	
5-03	O	13-12	5-03
5-83		9-05	4-22
	N	209° 38'	
6-04	N	10-46	4-02
5-03		8-45	5-03
4-22		6-44	5-83
	M	240° 47'	
6-24	M	16-15	3-82
4-22		13-08	5-83
	L	316° 27'	
track	L		
5-03		23-80	5-03
track		6-24	
	K	216° 47'	
5-83	K	31-92	4-22
5-03		20-12	5-03
	J	238° 54'	

	F	43-65	
	O	40-23	6-04
1-01		30-17	5-03
3-02		10-06	3-02
	X	106° 15'	
2-01	X	25-03	4-02
3-02		20-12	3-02
5-03		10-06	1-01
	W	40° 47'	
4-02	W	24-00	2-01
6-04		10-06	D
5-03		8-05	1-01
	T	9° 54'	
	T		
3-02		19-31	3-02
2-01		4-02	4-02
2-01		2-01	5-03
	V	335° 47'	
	V		
3-02		26-15	3-02
	U	20° 02'	
	U		
3-62		39-03	2-41
	D	23° 47'	

Sta	Bear	Dist	Along Centre of Track
I - Q	187° 58'	34-32	
Q - R	131° 47'	33-80	
R - S	186° 14'	9-21	
S - T	100° 17'	14-36	



Approved
[Signature]
Director of Surveys
2002-07-03

NOTES FOR LA LAJA ROAD & RAVINE

cf. L & S. Bk. 110 Fol. 148
S.O. No. 61/20

SCALE : 1 / 2500

Note: To obtain compass bearings ~~subtract~~ add 13 minutes.

Distances are in metres

PLAN of a Parcel of land coloured pink in the Ward of Blanchisseuse

Containing one point eight three three seven hectares

Redefined
Surveyed by me with due authority in June 2001

In accordance with ~~Rule~~ Regulation 25(1) of the Land Surveyors' Regulations 1998,

I certify that this plan is correct.

Checked by M.M. 01/07/02

Arnold A. J. Ramon-Fortune TTLS, MICE,
23 SEPTEMBER 2001
Trinidad & Tobago Land Surveyor.....2001

Entered.....

07 SEP 2001
Lands and
Surveys
Division