

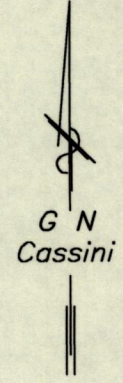
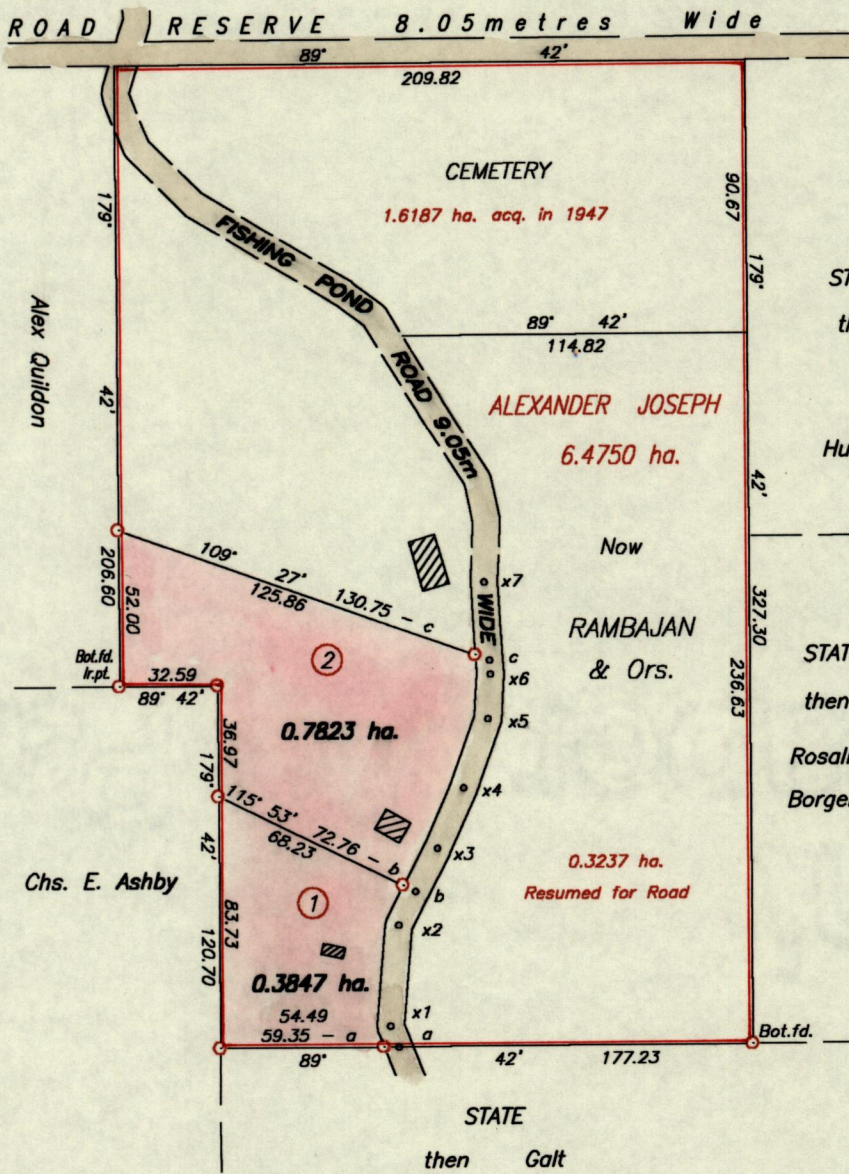
R.P.O. Vol. 108 Fol. 483

C.T. Vol. 483 Fol. 325

Cadastral Sheet $\frac{26D}{2/d}$ (C.23.N.)

Ward of Manzanilla

County of St. Andrews



REFERENCES
 S.O. 186/1908
 PLAN M.A.38

Stns. denote centre of Road

Station	Bearing	Distance	Station
a	338° 32'	7.54	x1
x1	04° 42'	33.60	x2
x2	26° 59'	12.51	b
b	26° 59'	16.16	x3
x3	23° 37'	21.93	x4
x4	19° 32'	24.34	x5
x5	03° 12'	14.89	x6
x6	356° 12'	4.65	c
c	356° 12'	25.93	x7

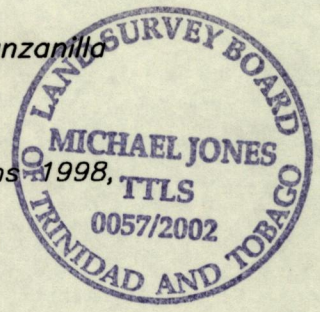
Approved *[Signature]*
 Director of Surveys
 2002.10.25

- Denotes Iron put unless otherwise stated
- To obtain compass bearing add 18 minutes
- Bearings are based on Solar observations

SCALE 1:2500
 Distances are in METRES

PLAN of 2 Parcels of land coloured pink in the Ward of Manzanilla
 Containing together one point one six seven zero hectares.
 Surveyed by me with due authority in February, 1998.
 In accordance with Reg. 25 (1) of the Land Surveyors' Regulations 1998,
 I certify that this Plan is correct.

Checked by *[Signature]* 2002.10.10 *[Signature]* T.T.L.S.
 Entered on Trinidad & Tobago 20th Sept., 2002.
 Land Surveyor



BS↑

1271

THE ...
...

UNIVERSITY OF ...
...



-8 OCT 2002
Lands and
Surveys
Division