

REMAINING PORTION

R.P.O. Vol 97 fol 193

1271

Cadastral Sheet 63 F, G 13 G 1/d

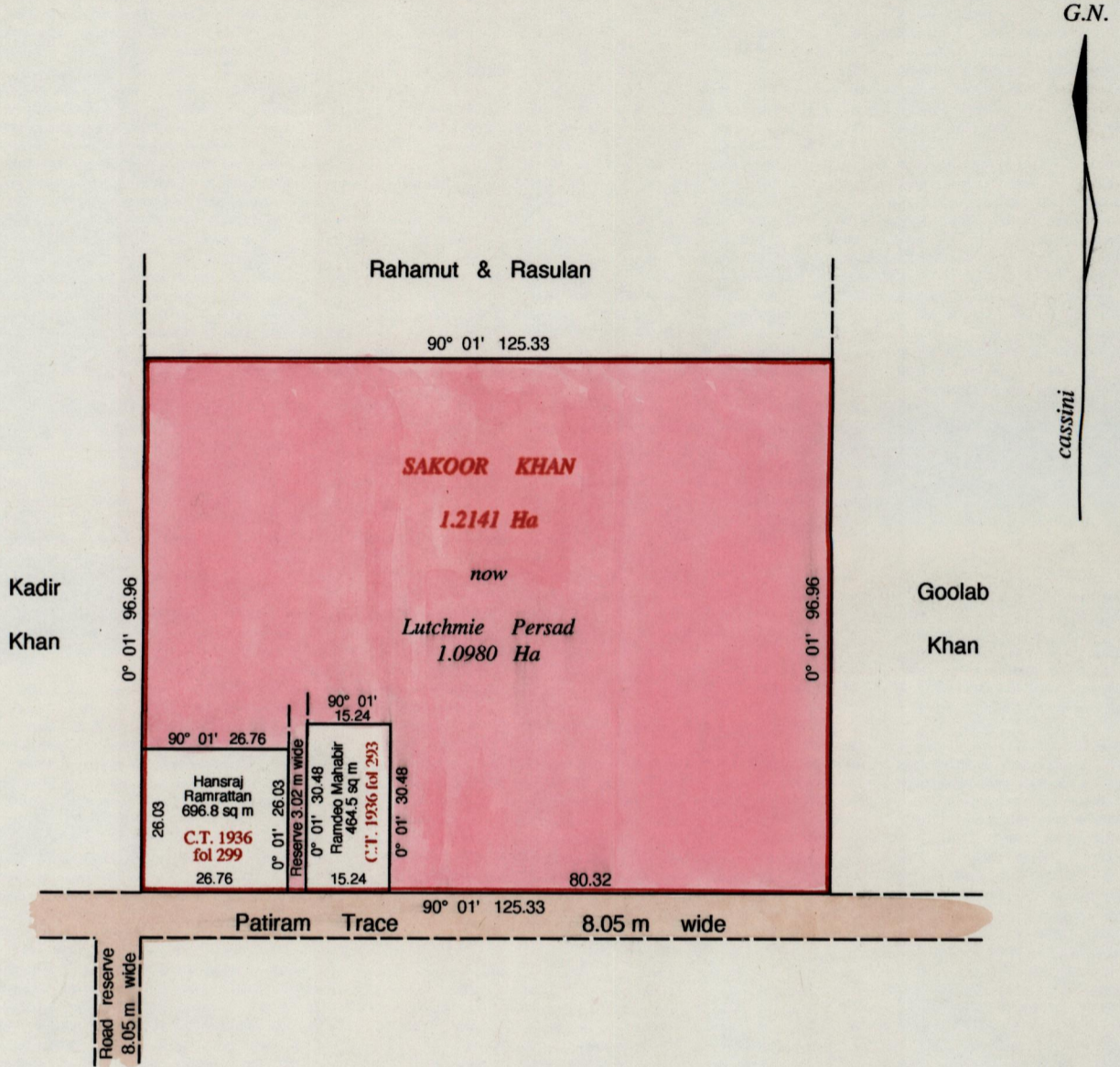
12

C. of T. Vol fol

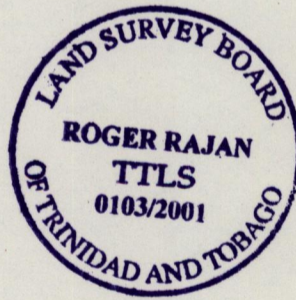
Ward of Siparia

Remaining Portion Pan filed in R.P.O. Vol. 1936 fol. 285

County of St. Patrick



Vide
Bk 391 : 59
Bk 985 : 24, 26
Bk 1145 : 5



Approved

[Signature]
Director of Surveys
25.11.01

SCALE 1 : 1250

Distances are in metres

This is a true copy of a diagram of one point two one four one hectares originally granted to SAKOOR KHAN, shewing a portion coloured pink and containing one point zero nine eight zero hectares being the remainder after two (2) previous transfers of other portions of land

I hereby certify, that in accordance with Rule 25 (1) of the Lands Surveyors Regulations of 1998, this plan is correct.

Checked by *[Signature]* 15 June 01

[Signature]

Entered on

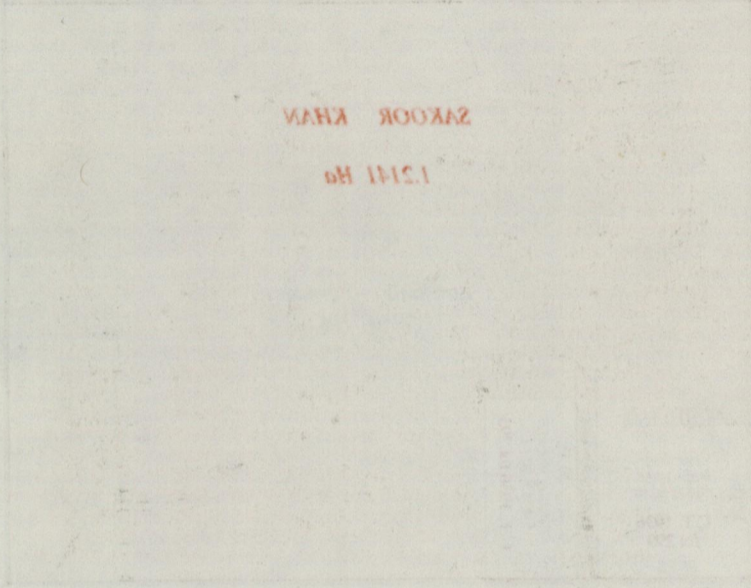
T. T. L. S. 07th November 2001.

12

127

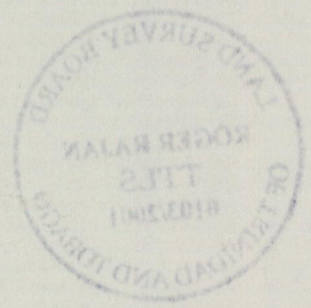
193

Remaining portion has been filed in R.O. Vol. 1936 fol. 282

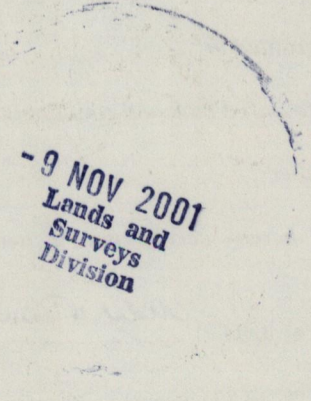


ZAKOOR KHAN

1241 Ha



[Handwritten signature]



- 9 NOV 2001
Lands and
Surveys
Division

[Faint handwritten notes and signatures at the bottom of the page]