

R.P.O. Vol: 592

Fol: 173

1271

Cadastral Sheet G.14.M.

64D  
3/c 10

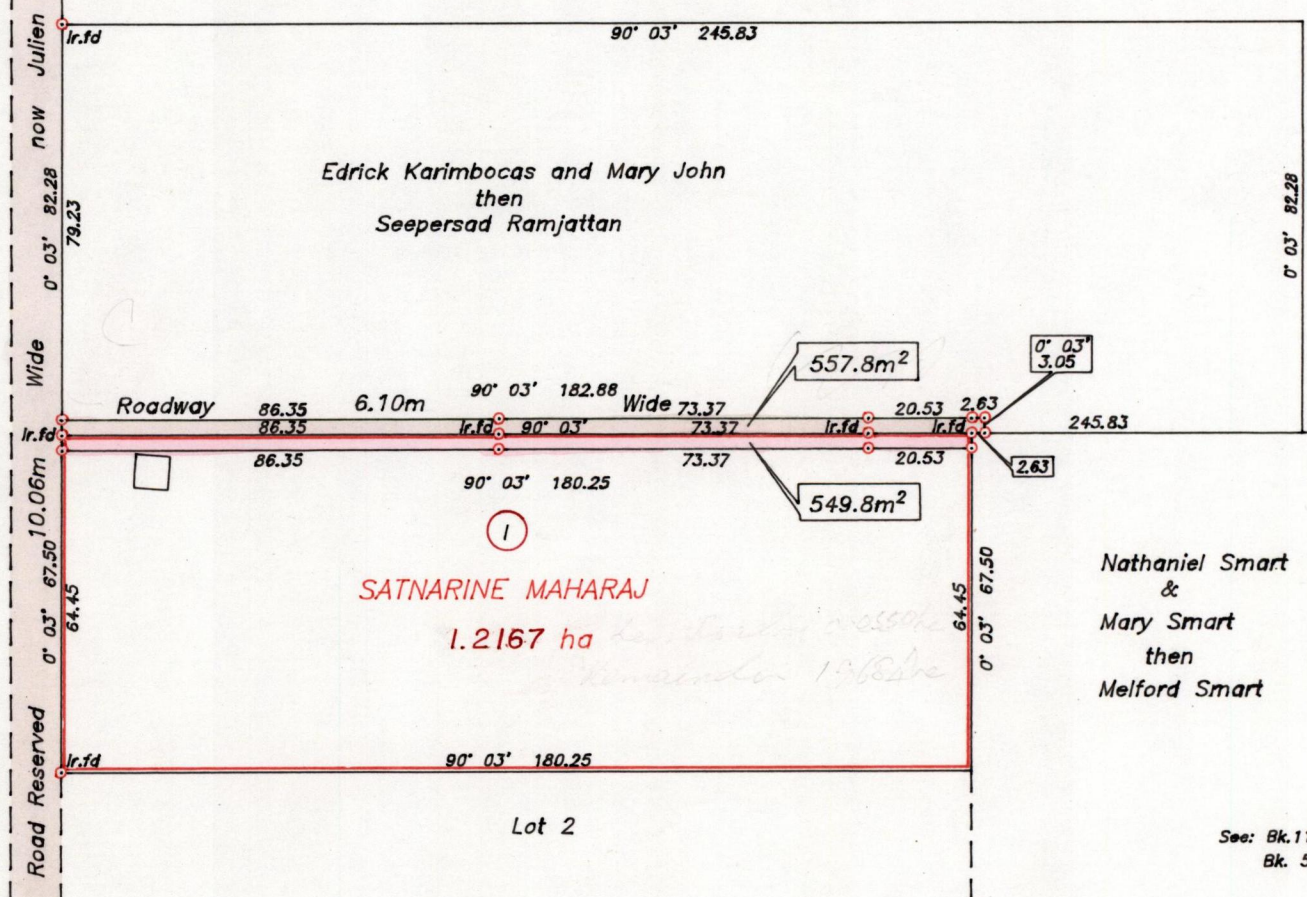
CT. Vol: 3358

Fol: 135

Ward of Siparia

County of St. Patrick

Karimbocas and Naseban



Approved

*[Signature]*  
 Director of Surveys  
 25.07.03



o Denotes Iron put except where otherwise indicated.

SCALE 1/1500

Note: To obtain compass bearings subtract 3 minutes.

Distances are in metres

PLAN of a Parcel of land coloured pink in the Ward of Siparia

Containing five hundred and forty nine point eight square metres

Surveyed by me with due authority in October 2000

In accordance with reg. 25 (1) of the Land Surveyors' Regulation: 1998,

I certify that this plan is correct.

Checked by *[Signature]*

*[Signature]*

Entered.....

Trinidad & Tobago, Land Surveyor ... 2<sup>nd</sup> November 2000



10

1751

- 9 NOV 2000  
Lands and  
Surveys  
Division