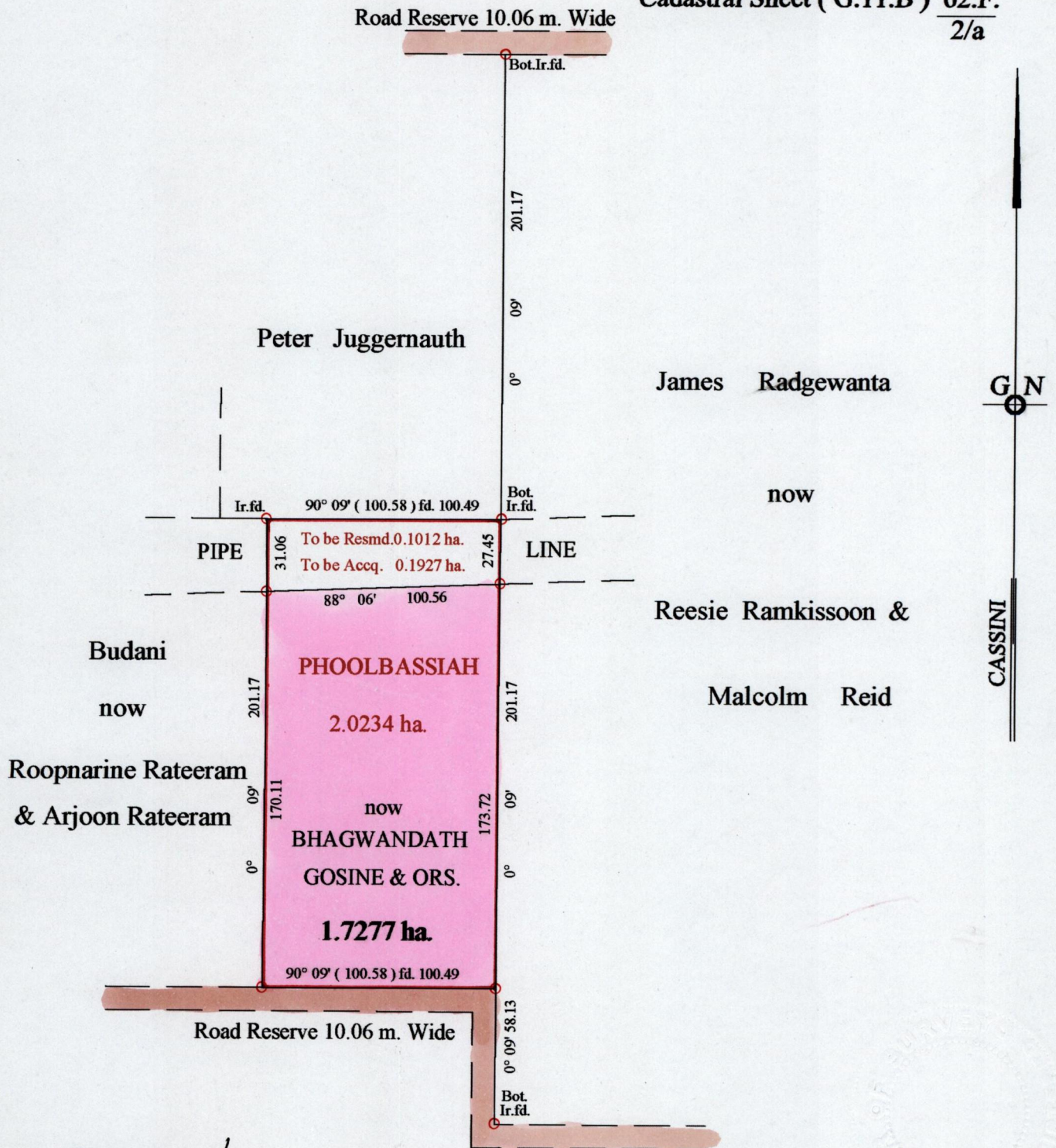


BR 1267

93

R.P.O. Vol. 119 Fol. 645
C.T. Vol. 1424 Fol. 85

Ward of La Brea
County of St. Patrick
Cadastral Sheet (G.11.B) 62.F.
2/a



Approved *[Signature]*
Director of Surveys
2001-9-4

Vide Bk. 471 fol. 24
Plan J.B.216

○ Denotes Iron put except stated otherwise.

SCALE : 1:2500

Note: Bearings are cassini grid based on solar observations

Distances are in metres

PLAN of a Parcel of land coloured pink in the Ward of La Brea

Containing one point seven two seven seven hectares

Surveyed by me, with due authority, in November 2000

In accordance with Rule 25 (1) of the Land Surveyors Regulations 1998,

I certify that this plan is correct.

Checked by *[Signature]* 2001-8-27

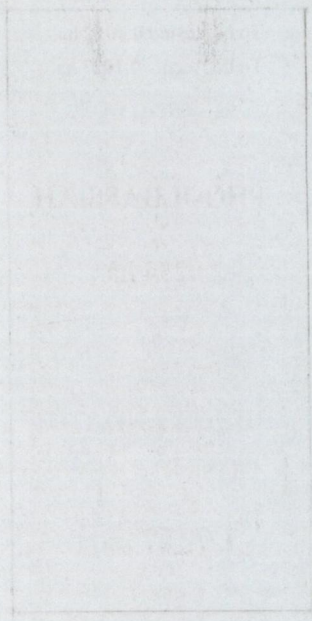
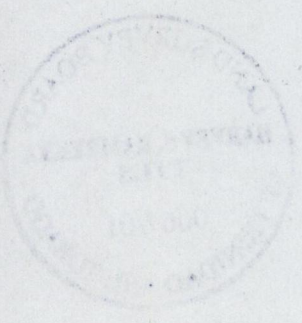


Entered on Trinidad & Tobago Land Surveyor 15. 08. 2000'

28

1951

THE UNIVERSITY OF CHICAGO
LIBRARY



W. H. ...

...