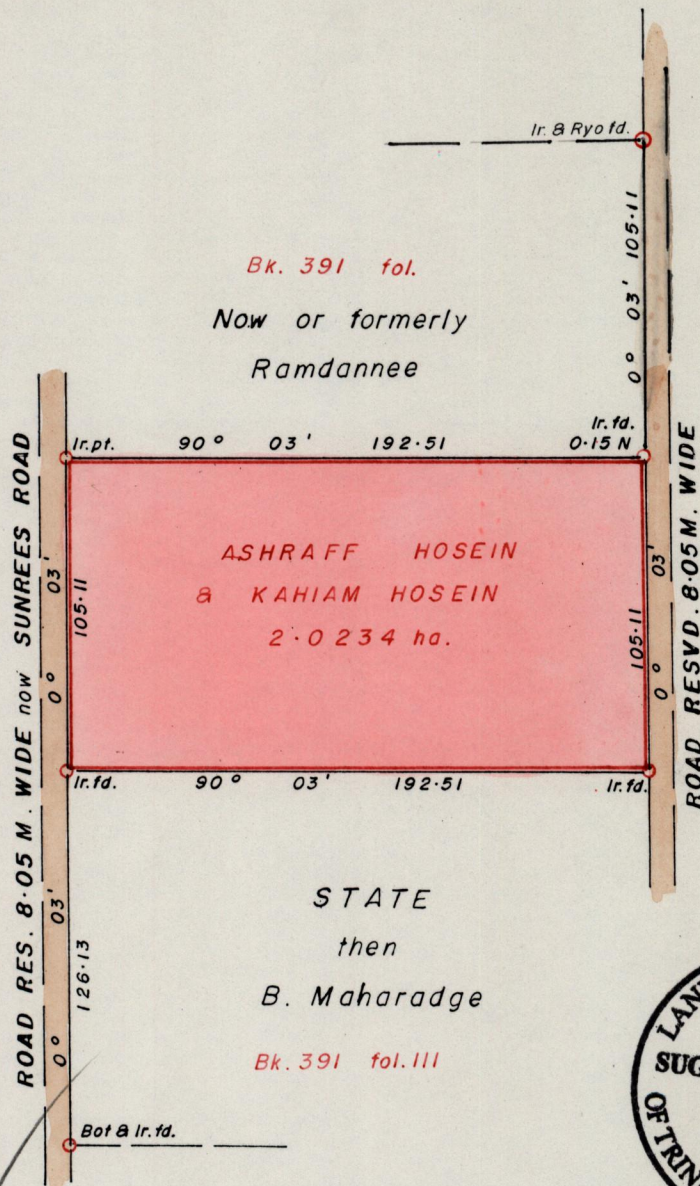


R.P.O. Vol. 98
C.T. Vol 4058

Fol. 9
Fol. 505

Ward of Siparia
County of St. Patrick
Cadastral Sheet G. 13. M. 63E
4/d.

Bk. 391 fol. 96



Bk. 391 fol.

Now or formerly
Ramdanee

ASHRAFF HOSEIN
& KAHIAM HOSEIN
2.0234 ha.

STATE

then

B. Maharadge

Bk. 391 fol. 111



Approved
00-06-13

[Signature]
Director of Surveys
2007.8.15

SCALE 1 : 2500

Distances are in metres

Note: To obtain compass bearings add/subtract minutes

PLAN of a Parcel of land coloured pink in the Ward of Siparia

Containing two point zero two three four hectares

Surveyed by me, with due authority, in May 2000

In accordance with rule (25) (1) of the Land Surveyors Regulations 1998 I certify that this plan is correct.

Checked by *[Signature]*

[Signature]
21st May

Entered on , Trinidad and Tobago Land Surveyor 2000.

