

1267

77

R. P. O. Vol. 217.

Fol. 571.

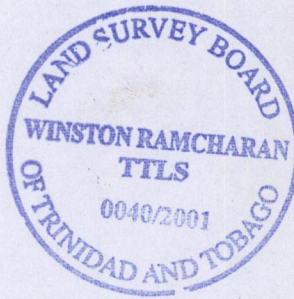
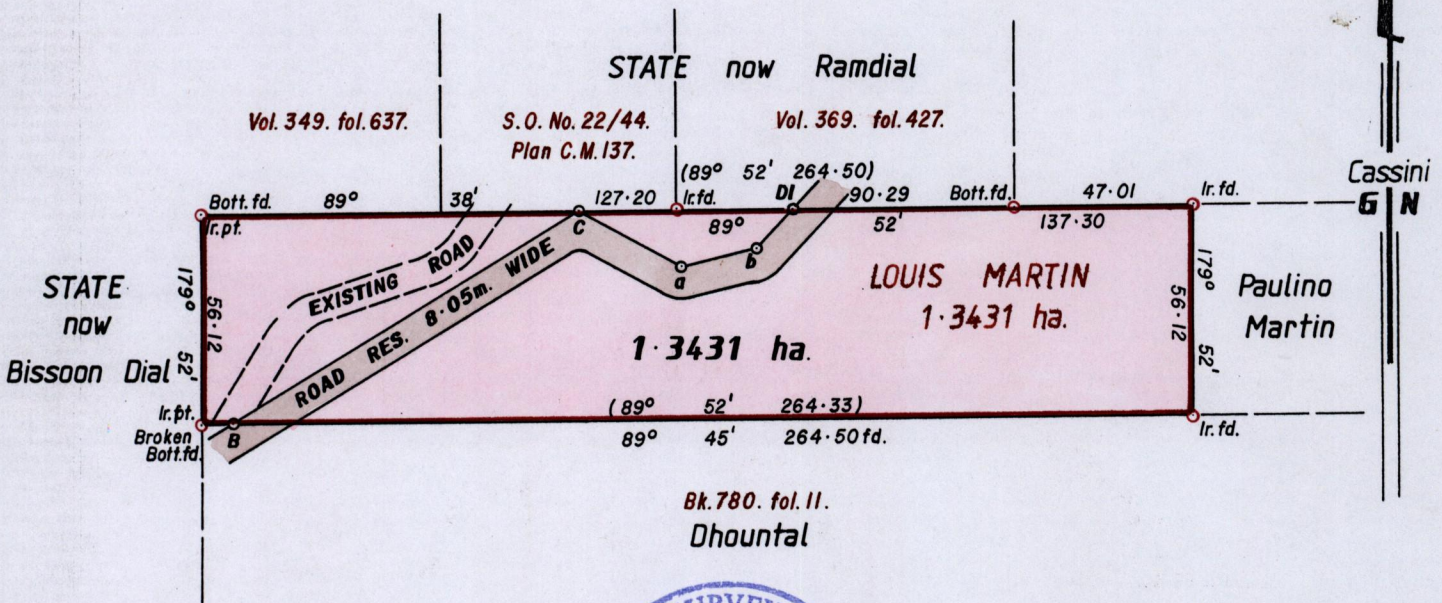
C. T. Vol. 923.

Fol. 429.

Cadastral Sheet D. 10. N. $\frac{34F}{27d}$

Ward of San. Rafael.

County of St. George.



LEGEND	
B - C	239° 42' 111.65
C - a	112° 48' 28.57
a - b	80° 49' 19.51
b - DI	34° 28' 14.08

Approved

Director of Surveys 2007.8.4

o Denotes iron put except otherwise stated.

SCALE 1 : 2000.

Cassini Grid bearings based on Solar Observations.

Note: To obtain compass bearing ~~subtract~~ add 08 minutes Distances are in metres.

PLAN of a Parcel of land coloured pink in the Ward of San Rafael.

Containing one point three four three one hectares.

Surveyed by me, with due authority, in July 1998.

In Accordance with Rule 25 (1) of the Land Surveyors' Regulations 1998, I certify that this plan is correct.

Checked by 24.01.08.03

Trinidad & Tobago.

Entered on

Land Surveyor,

2nd October

1998

10

