

12657

54

REMAINING PORTION

C. of T. Vol 6 fol 539

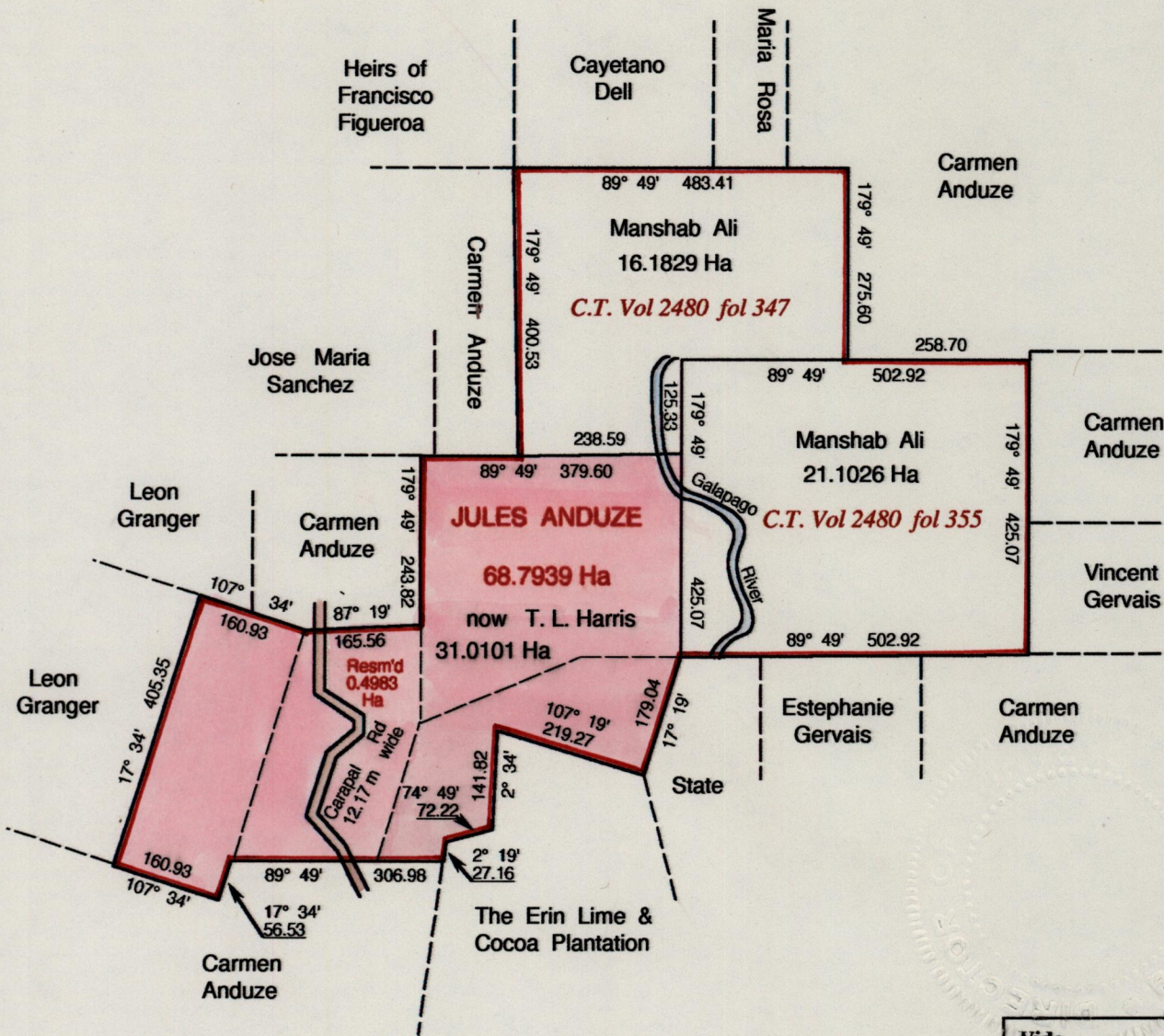
Cadastral Sheet 72 E, F.20.N, F.25.B
1/b

C. of T. Vol 1638 fol 367

Ward of Erin

County of St. Patrick

G.N.



Vide
 Bk 1110 : 70, 71
 Bk 439 : 167
 Bk 438 : 50, 84

Approved

[Signature]
 Director of Surveys
 2001-06-28



SCALE 1 : 10,000

Distances are in metres

Note : To obtain compass bearings add 11 minutes

This is a true copy of a diagram of **sixty-eight point seven nine three nine hectares** originally granted to **JULES ANDUZE**, shewing a portion coloured pink and containing **thirty-one point zero one zero one hectares** being the remainder after **two (2) previous transfers & one (1) resumption** of other portions of land

I hereby certify, that in accordance with Rule 25 (1) of the Lands Surveyors Regulations of 1998, this plan is correct.

Checked by *[Signature]*

[Signature]

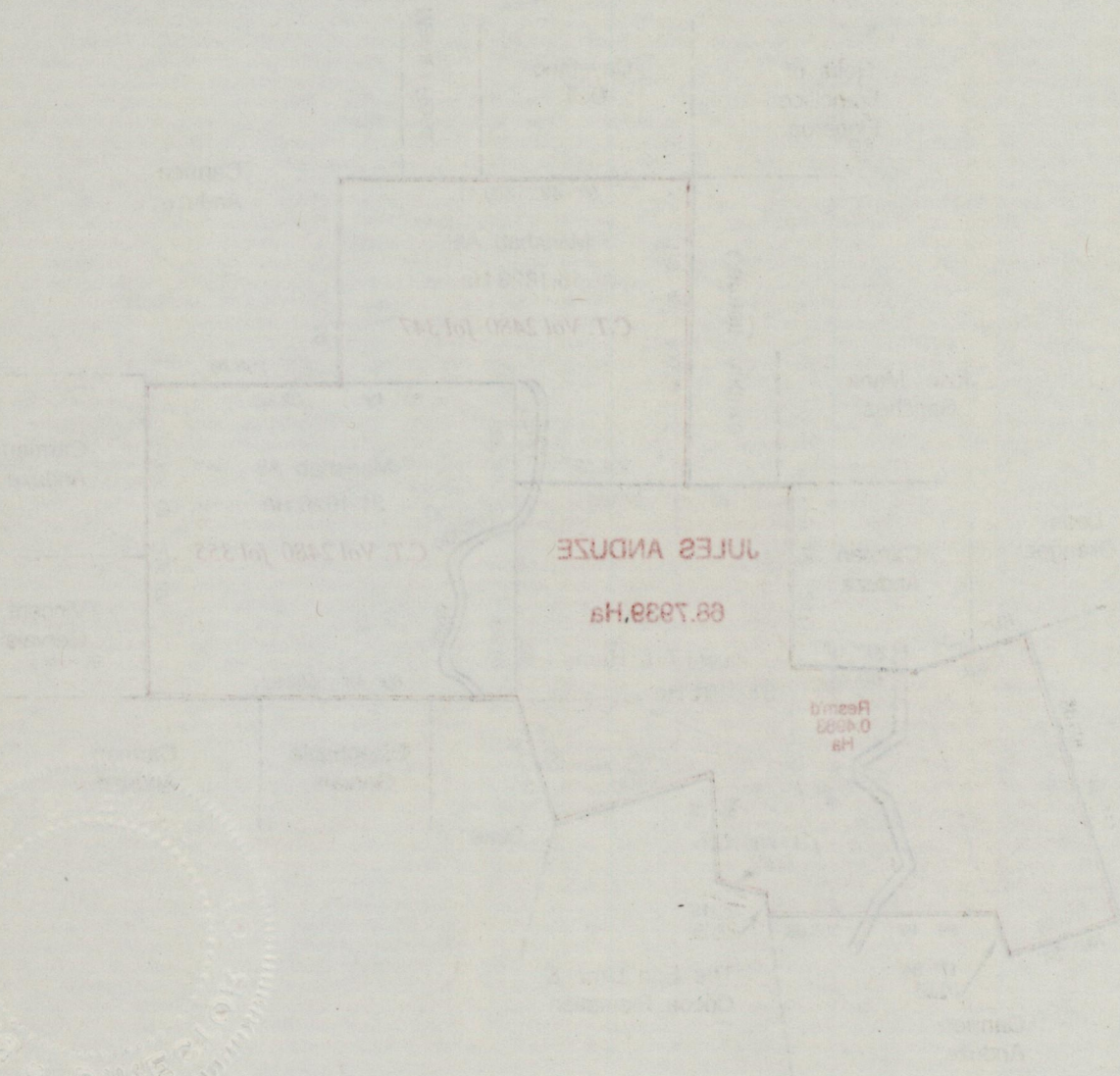
Entered on

T. T. L. S. 11th June 2001

Case No. 1032 of 307

Case No. 1032 of 307

Case No. 1032 of 307



13 JUN 2001
 Lands and
 Surveys
 Division