

R.P.O. Vol. 34

Fol. 381

C.T. Vol. 4151

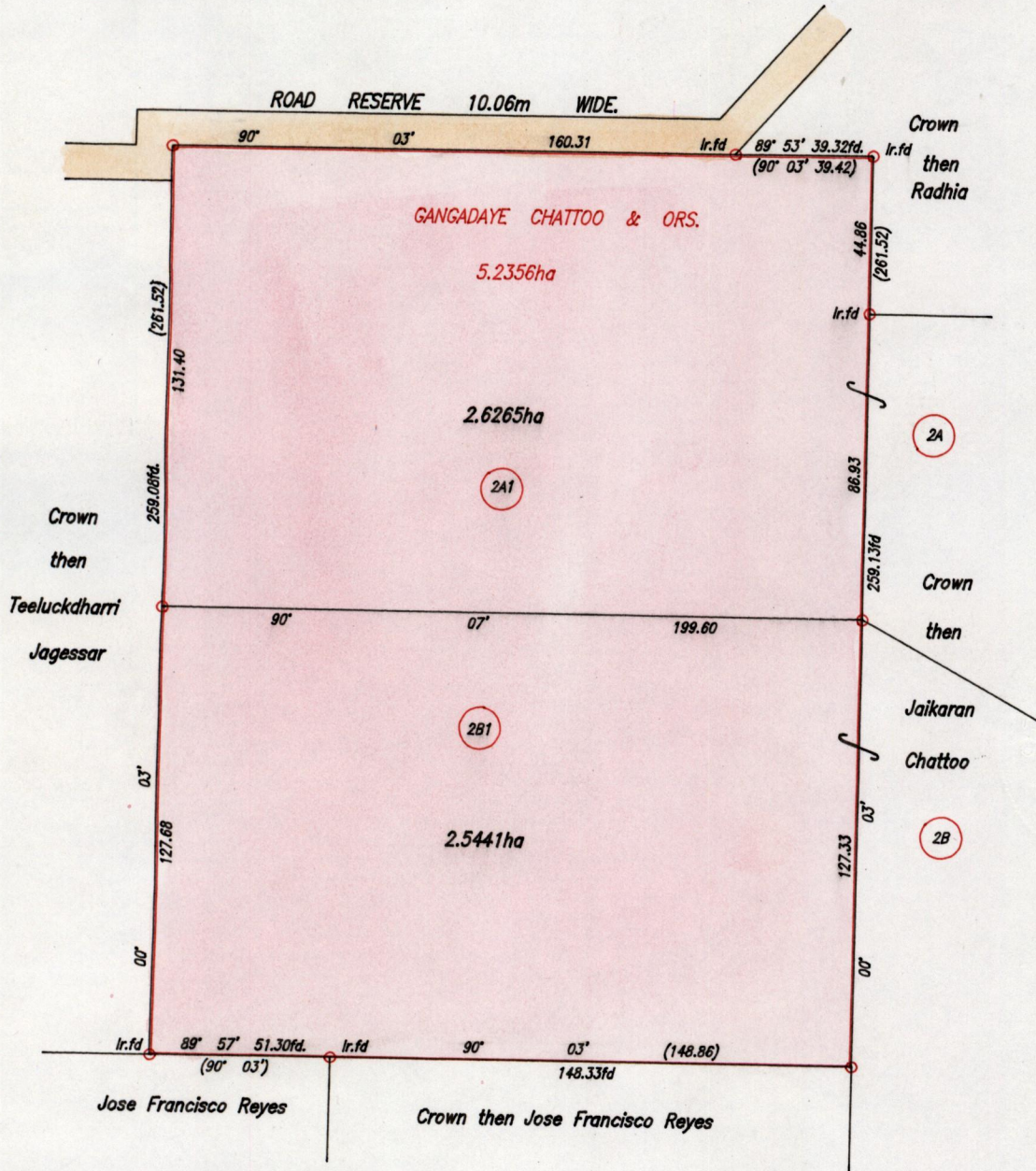
Fol. 319

Vide Bk.461 fol 158

Ward of Siparia

County of St.Patrick

Cadastral Sheet G.13.I. 63E
4/a



Cassini
G I W

NOTE: Plot 2A1 to be amalgamated to Plot 2A
Plot 2B1 to be amalgamated to Plot 2B

Approved *[Signature]*
Director of Surveys

○ Denotes Iron put except otherwise stated.

SCALE 1:2000

Bearings are based on solar Observations

Distances are in Metres.

PLAN of 2 Parcels of land coloured pink in the Ward of Siparia.

Containing together five point one seven zero six hectares.

Surveyed by me, with due authority, in April, 2000

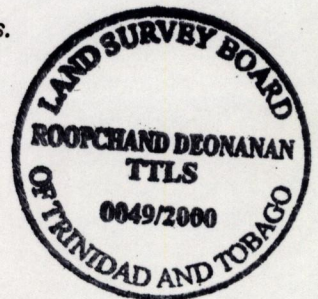
In accordance with Rule 25(1) of the Land Surveyors Regulations 1998,

I certify that this plan is correct.

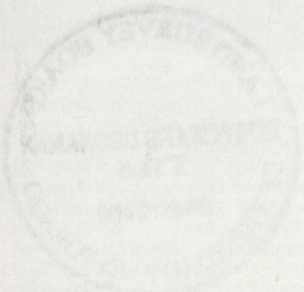
Checked by *[Signature]*

Entered on

[Signature]
Trinidad & Tobago Land Surveyor *12th September 2000*
PATH = EV700 C:\Drawings\Chattoo1.dwg



1581



15 SEP 2000
Lands and
Surveys
Division