

1267

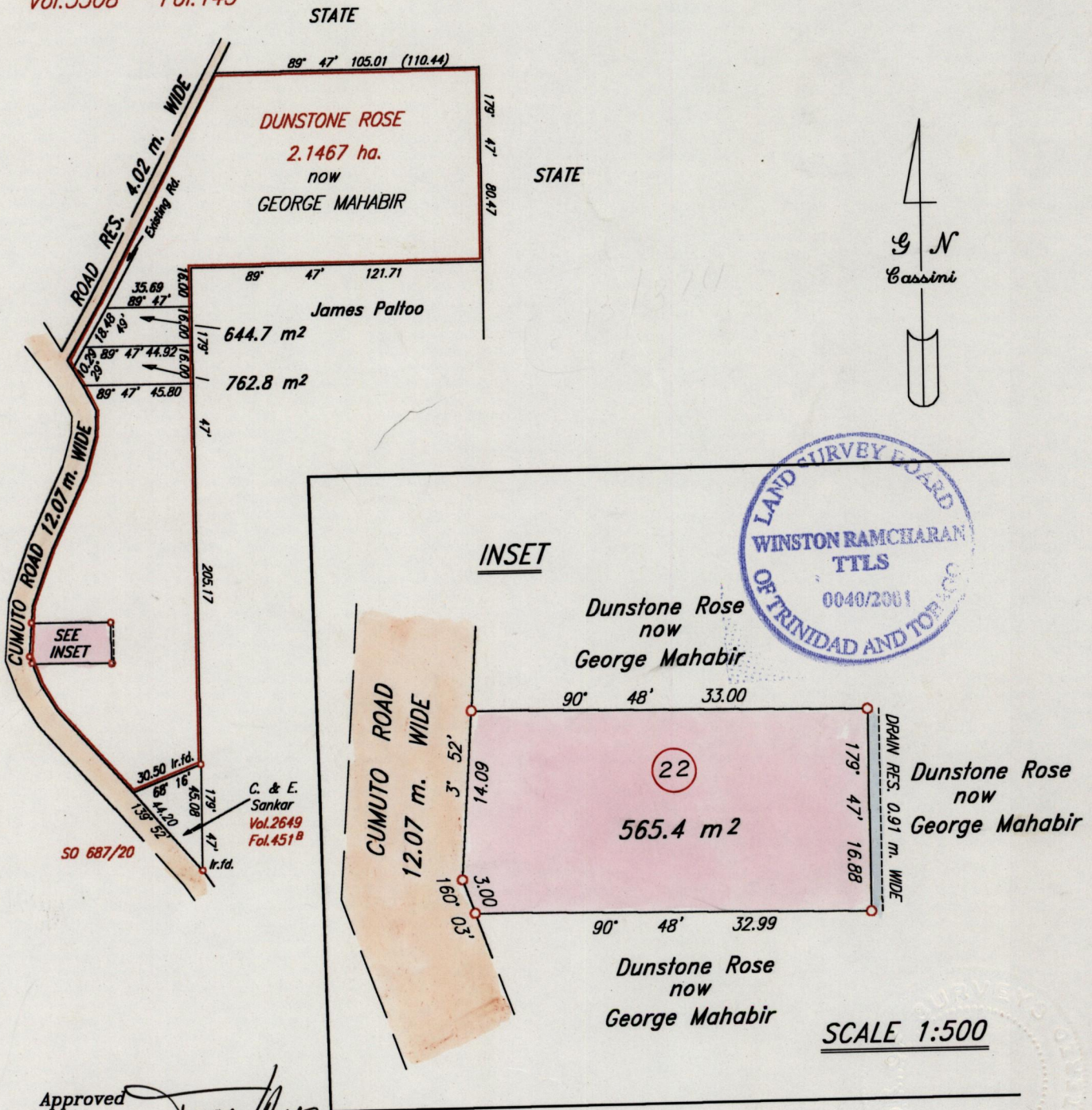
29

R.P.O. Vol. 500
C.T. Vol. 3146
U.P.R.N.

Fol. 263
Fol. 395

Ward of Tamana
County of St. Andrew
Cadastral Sheet E.1.A. 25D
2/d

Remaining Portion Plan in Vol. 3063 Fol. 23
Vol. 3508 Fol. 145



Approved *[Signature]*
Director of surveys

○ Denotes Iron put, except otherwise stated.
Bearings are based on Solar Observations
Note: To obtain compass bearing add 13 minutes
PLAN of a Parcel of land coloured pink
Containing five hundred and sixty five point four sq. metres.
Surveyed by me, with due authority, in June 1999.
In accordance with rule 25 (1) of the Land Surveyors' Regulations 1998,
I certify that this plan is correct.
Checked by *[Signature]* 31/06/01

SCALE:- 1:2500

Distances are in metres
in the Ward of Tamana

Entered..... Trinidad and Tobago Land Surveyor..... *[Signature]* 22nd August 2000

05

Orig Survey BK 213 Fol 374

Remaining Partition Plan in Vol. 3063 Fol. 53
Vol. 3808 Fol. 148



16 MAY 2001
Lands and
Surveys
Division