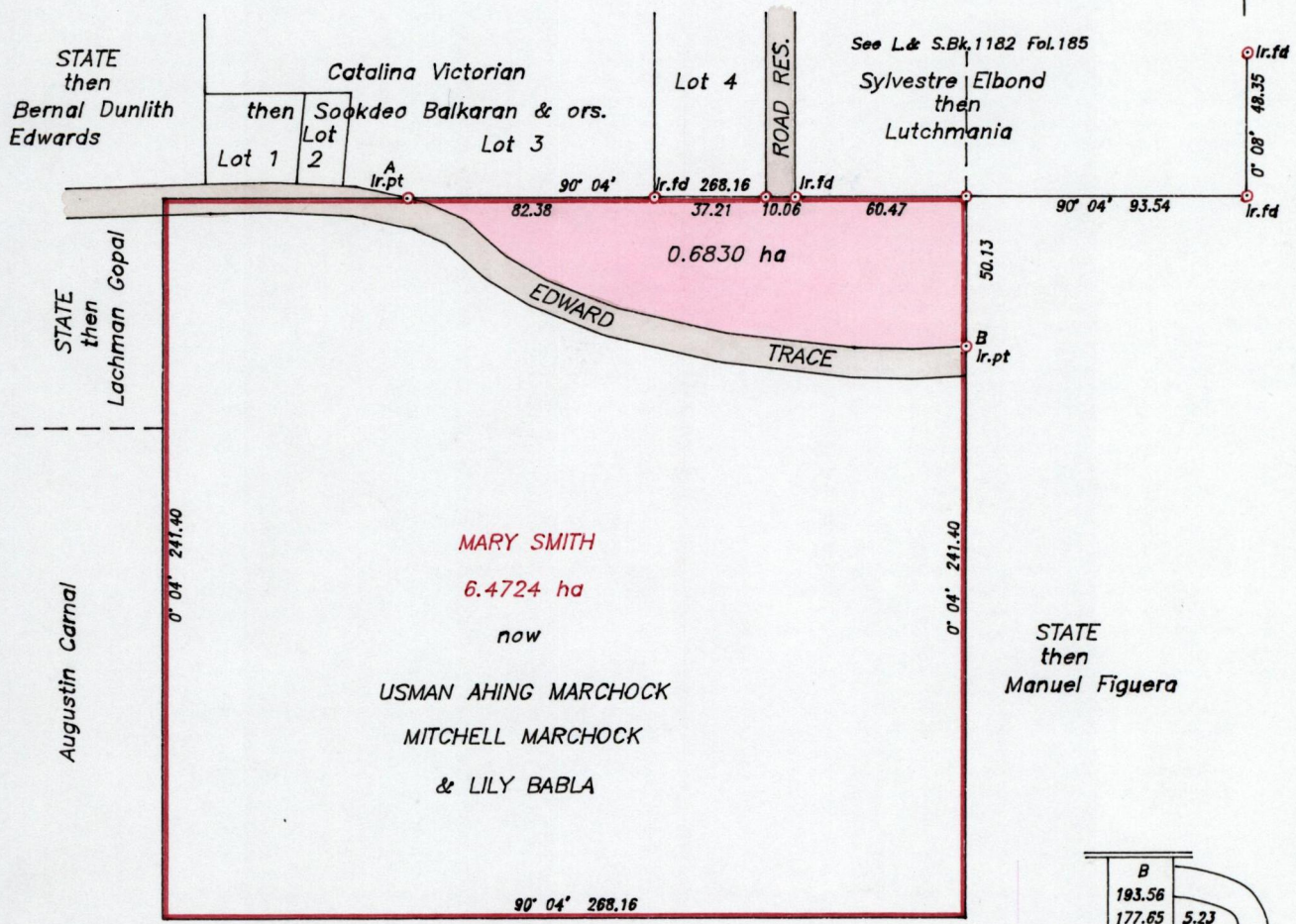


R.P.O. Vol. 22 Fol. 25
C.T. Vol. 808 Fol. 199

Ward of Siparia
County of St. Patrick
Cadastral Sheet G.17.C.

73B
1/a&1/c

G N
cassini



B	
193.56	
177.65	5.23
157.74	10.12
150.54	11.18
114.74	16.45
76.69	17.76
51.21	14.73
36.27	10.36
20.43	2.15
6.97	
0.24	
Tie Line	5.44
0	
A	105° 08'

Approved
[Signature]
 Director of Surveys
 2002.06.05

SCALE 1/2500

Note: To obtain compass bearings subtract 4 minutes. Distances are in metres

PLAN of a Parcel of land coloured pink in the Ward of Siparia
 Containing zero point six eight three zero hectares
 Surveyed by me with due authority in June 2001

In accordance with rule 25 (1) of the Land Surveyors' Regulations 1998,
 I certify that this plan is correct.

Checked by *[Signature]*

Entered.....

[Signature]
 Trinidad & Tobago Land Surveyor 19 July 2001



25 JUL 2001
Lands and
Surveys
Division

1267/278