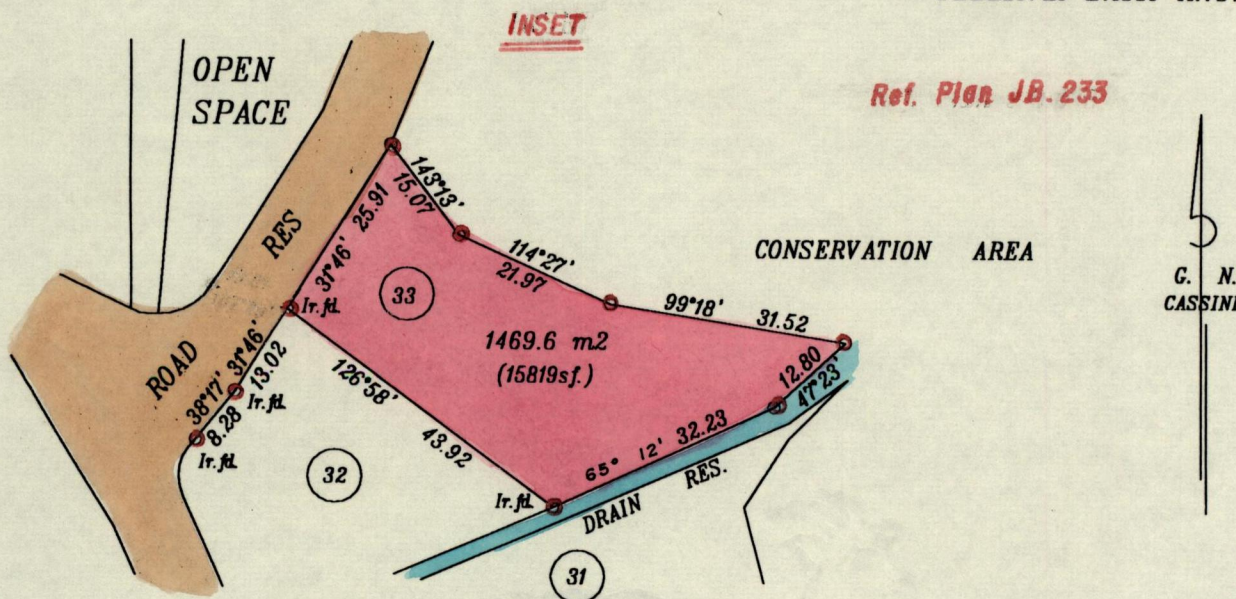
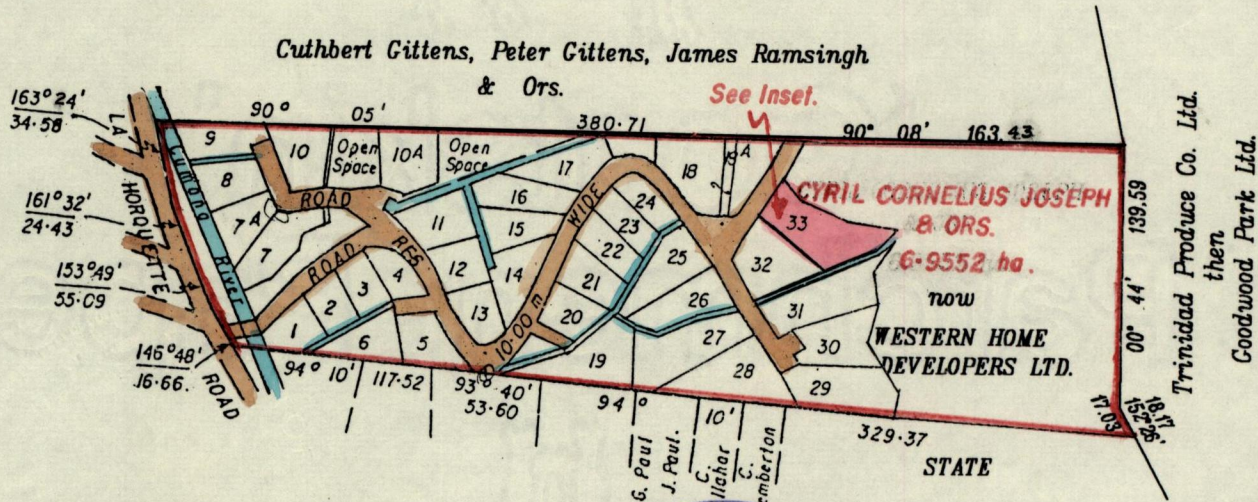


R.P.O. Vol. Fol.
C.T. Vol. 3778 Fol. 485

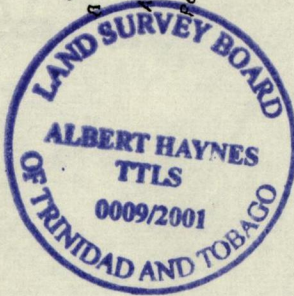
Ward of Diego Martin
County of St. George
Cadastral Sheet A.19.C. 12F
2/c



SCALE 1: 1000
Distances are in metres
○ Denotes Ir. put except otherwise stated



Approved.....
Director of Surveys
2002.05.17



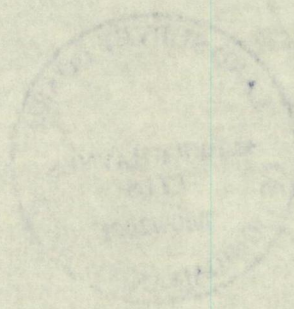
Bearings based on Solar Obs.
○ Denotes Iron put except otherwise stated.

SCALE 1: 4000
Distances are in metres

Bearings are based on Solar Obs.
Note : To obtain compass bearings add/~~subtract~~ 3 minutes.
PLAN of a Parcel of land coloured pink in the Ward of Diego Martin
Containing one thousand four hundred and sixty nine point six square metres.
Surveyed by me, with due authority, on 22nd June 2001.
In accordance with Rule 25(1) of the Land Surveyors Regulations 1998,
I certify that this plan is correct.

Checked by.....
Entered.....
Albert Haynes TTLS.
27 November 2001.

TO THE ATTORNEY GENERAL
STATE OF TEXAS



8 APR 2002
Lands and
Surveys
Division