

R.P.O. Vol. 310 Fol. 321

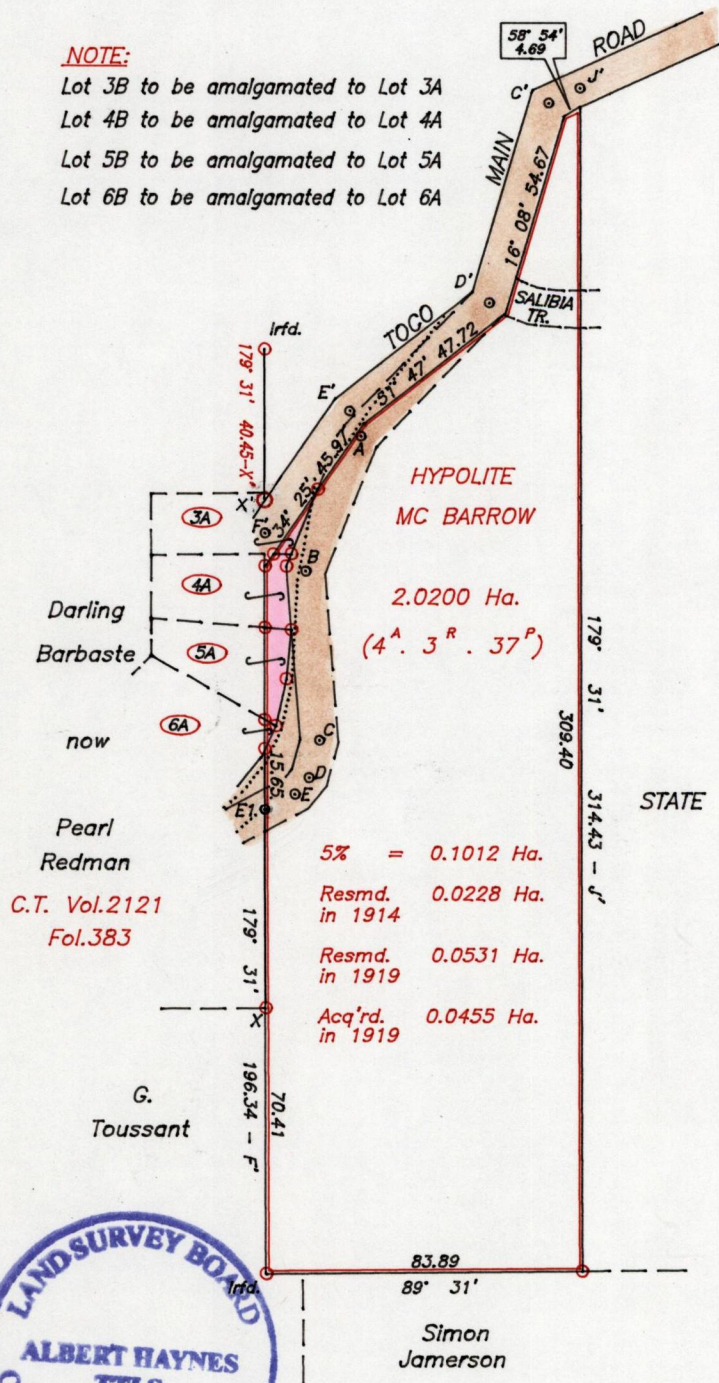
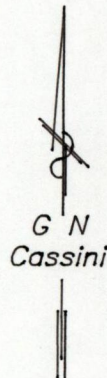
C.T. Vol. Fol.

**NOTE:**

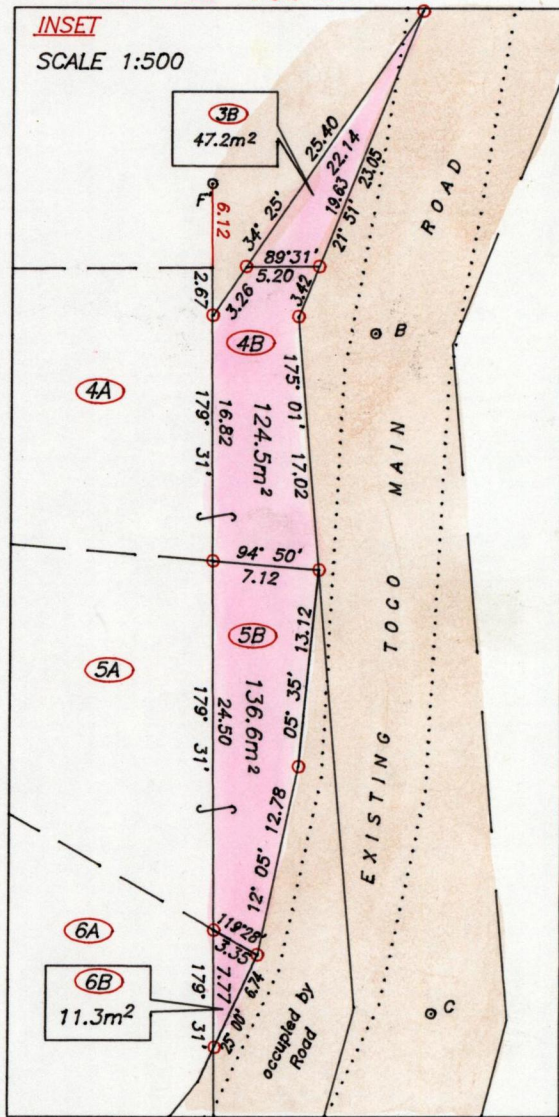
- Lot 3B to be amalgamated to Lot 3A
- Lot 4B to be amalgamated to Lot 4A
- Lot 5B to be amalgamated to Lot 5A
- Lot 6B to be amalgamated to Lot 6A

**LEGEND**

J' - C'	244° 37'	9.05
C' - D'	196° 08'	55.32
D' - A	223° 26'	49.19
A - B	201° 51'	38.64
D' - E'	231° 47'	46.87
E' - F'	214° 25'	39.53
F' - X'	359° 31'	8.65
B - C	175° 01'	45.26
C - D	195° 01'	10.26
D - E	220° 36'	5.77
E - E1	242° 06'	8.90



Ref. Bk.137 Fol.130



Approved *[Signature]*  
Director of Surveys

- Denotes Iron put unless otherwise stated
- Denotes centreline of Toco Rd. by PLAN B.B.31, S.O. 1/1919  
To obtain compass bearing add 29 minutes.  
Bearings are Cassini Grid based on Solar observations

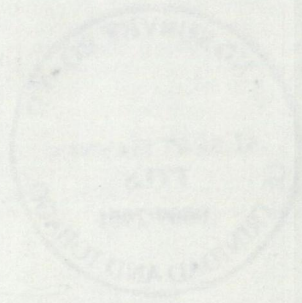
SCALE 1:2000  
Distances are in METRES

PLAN of 4 Parcels of land coloured pink in the Ward of Toco  
Containing together three hundred and nineteen point six square metres  
Surveyed by me, with due authority, in August 2001  
In accordance with Rule 25 (1) of the Land Surveyors' Regulations 1998,  
I certify that this Plan is correct.

Checked by *[Signature]* T.T.L.S.

Entered on ..... Trinidad & Tobago Land Surveyor *[Signature]* 24 November 2001





22 NOV 2001  
Lands and  
Surveys  
Division