

1367

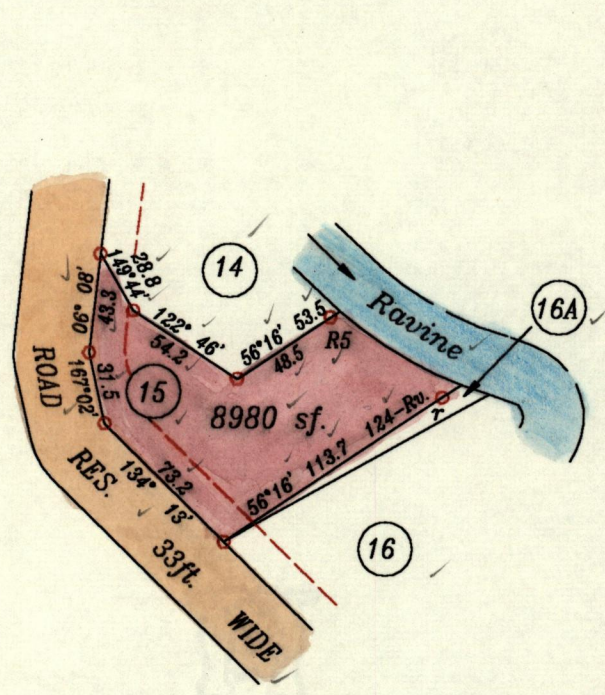
165

1267

165

RPO. Vol. 199 ✓ Fol. 33 ✓  
CT. Vol. 2242 ✓ Fol. 371 ✓

Ward of Tacarigua ✓  
County of St. George ✓  
Cadastral Sheet B.18.I ✓



$R5 - r \ 125^{\circ}14' \ 60.0$

Approved *[Signature]*  
Director of Surveys  
2007.12.20

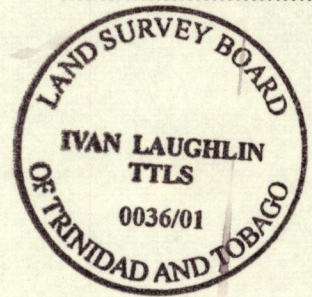
Building Line 15' .....  
○ Denotes Iron pit, except where otherwise stated. ✓

SCALE 1 : 1000  
Distances are in Feet ✓

Note : To obtain compass bearings add 3 minutes ✓  
PLAN of a Parcel of land coloured pink in the Ward of Tacarigua ✓  
Containing eight thousand nine hundred and eighty square feet. ✓  
Surveyed by me, with due authority, in September 1978. ✓  
In accordance with Rule 25(1) of the Land Surveyors' Regulations 1998,  
I certify that this plan is correct. ✓

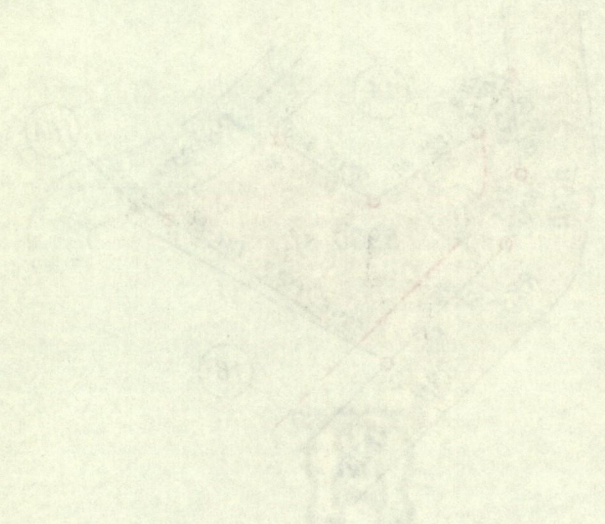
Checked by *[Signature]* 19/12/01  
Entered.....

*[Signature]* TTLS.  
27 November 2001.



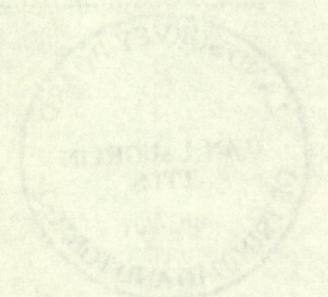
NOTE of Information  
County of St. George  
Exhibit A of 1871

490 Vol. 100  
CT Vol. 100



# DEPARTMENT OF LANDS AND SURVEYS

... of the ...  
... of the ...  
... of the ...  
... of the ...  
... of the ...  
... of the ...  
... of the ...  
... of the ...  
... of the ...  
... of the ...



30 NOV 2001  
Lands and  
Surveys  
Division

1267165