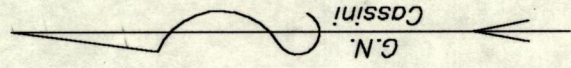


Cadastral Sheet 14D / b (B.13.N.)
Ward of Tacarigua
County of St. George

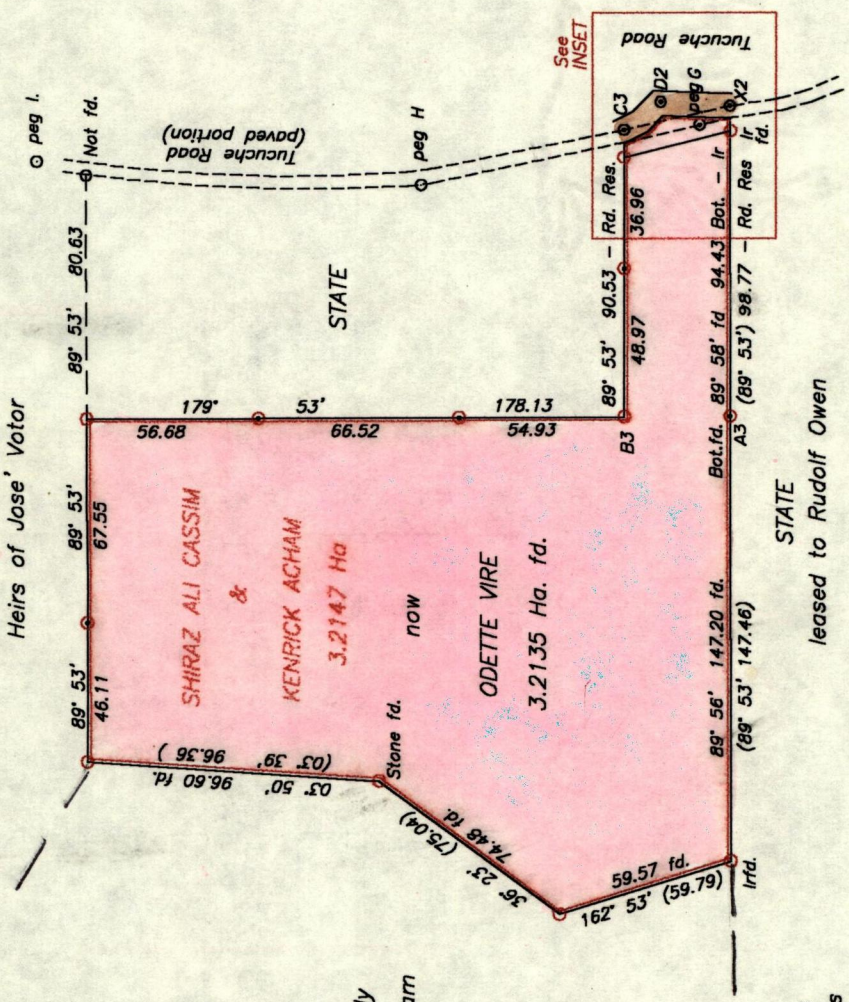
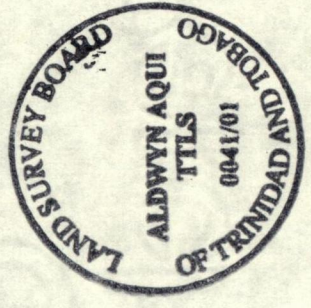
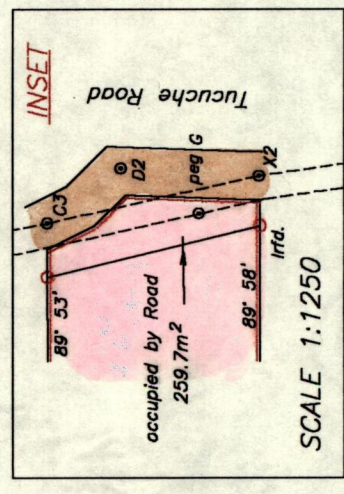
R.P.O. Vol. 514 Fol. 535
C.T. Vol. 3196 Fol. 261

Ref: Bk.1180:140
S.O. 136/1921



LEGEND 58'

Bot. fd.	- X2	89° 53'	102.80
X2	- D2	03° 08'	23.01
D2	- C3	322° 53'	15.29
C3	- B3	269° 53'	94.95
G	- H	347° 59'	94.58
H	- I.	03° 37'	127.24
G	- Irfd.	191° 41'	10.39



SCALE 1:2500
Distances are in METRES

Approved
Director of Surveys
2007.12.10

Bearings are based on Solar observations
To obtain compass bearing add 7 minutes

○ Denotes Iron put unless otherwise stated

PLAN of a Parcel of land coloured pink in the Ward of Tacarigua
Originally containing three point two one four seven hectares
now found to contain three point two one three five hectares

Surveyed by me, with due authority, November 1999 for Rodney Vire

In accordance with Rule 25 (1) of the Land Surveyors' Regulations 1998, I certify that this plan is correct.

Checked by A. J. T.T.L.S.
Entered on
Trinidad & Tobago Land Surveyor 07 2000

S.O. 139/1921
Tucuche Road

Traverse Notes

29 JUN 2001
Lands and
Surveys
Division

4.02		X2 23.03		4.02
	Road	0	Road	
		D2	183 08'	
4.02	Tucuche	D2		4.02
		15.29		
3.02		6.04		5.03
		0		
		C3	142 53'	
		C3		
		94.95		
Tucuche		90.53	Road	
		85.93	lrpt	
		48.97	lrpt	
		0		
		B3	89 53'	
		X2		
		102.8	Centre Tucuche Road	
		98.77		
		94.43	0.14 \circ lrfd.	
Old		18.91	Tucuche Road	
		0		
Bot fd.		A3	89 53'	