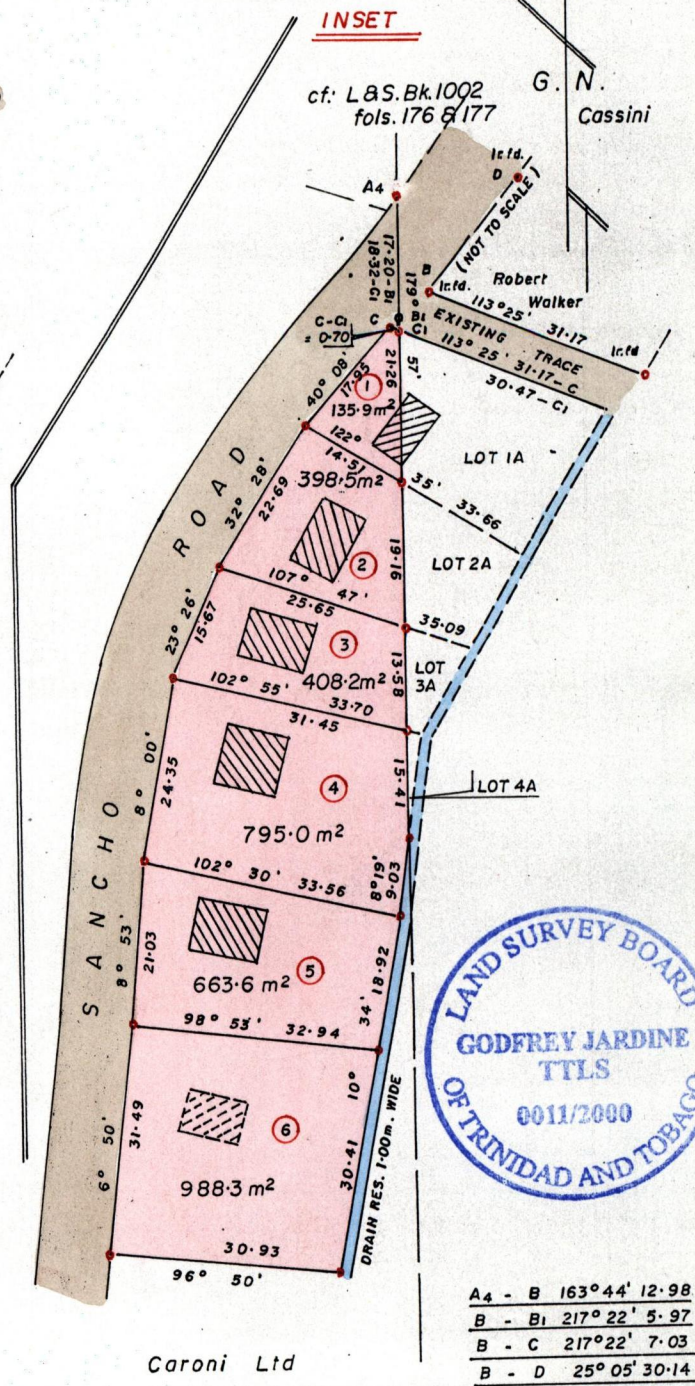
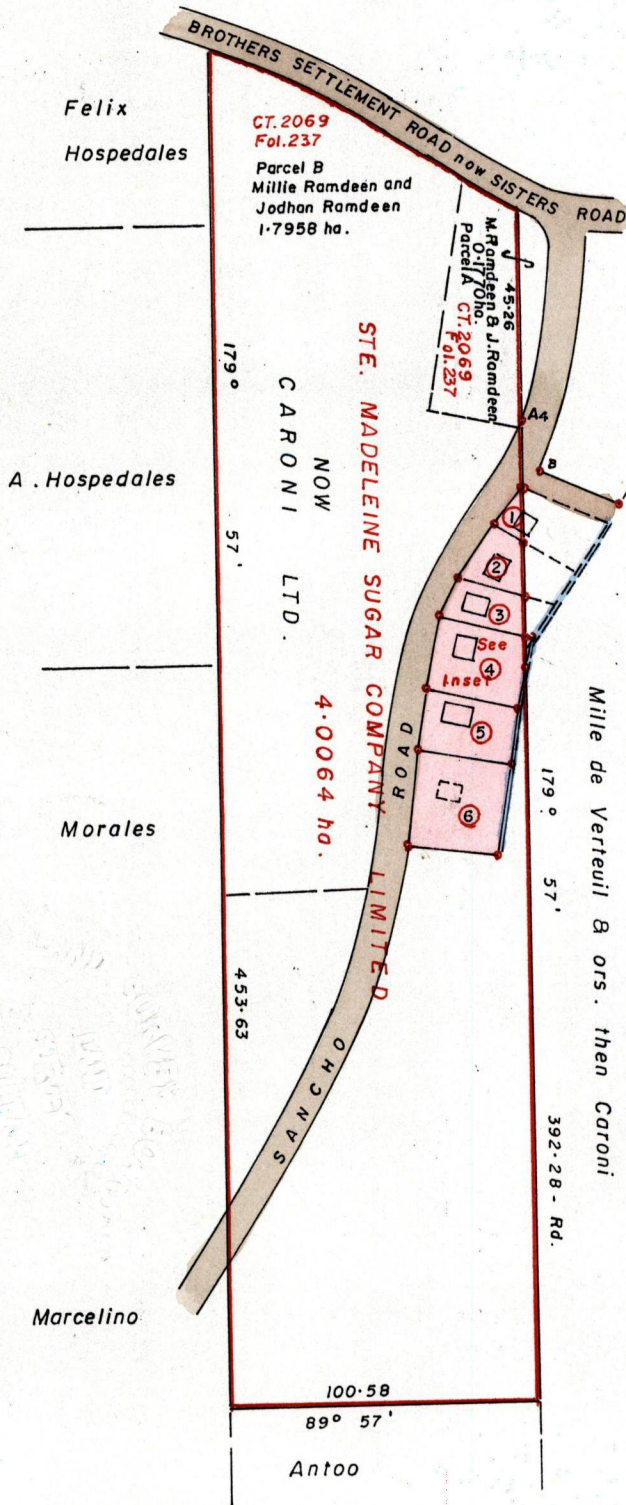


12657

142

R.P.O. Vol. 6 Fol. 147
C.T. Vol. 1495 Fol. 55

Cadastral Sheet D.24.N. 54B
4/a
Ward of Savana Grande
County of Victoria



A4 - B	163° 44' 12.98
B - B1	217° 22' 5.97
B - C	217° 22' 7.03
B - D	25° 05' 30.14

Lot 1 to be amalgamated with Lot 1A
 Lot 2 " " " Lot 2A
 Lot 3 " " " Lot 3A
 Lot 4 " " " Lot 4A

SCALE: 1/1000
 Distances are in metres

Approved *[Signature]*
 Director of Surveys *[Signature]*

Iron put at each corner except otherwise indicated
 Note: To obtain compass bearings add/subtract 3 minutes
 PLAN of 6 Parcels of land coloured pink in the Ward of Savana Grande
 Containing together three thousand three hundred and eighty nine point five square metres
 Surveyed by me, with due authority, in August 1999

In accordance with Rule 25 (1) of the Land Surveyors' Regulations 1998
 I certify that this plan is correct.

Checked by *[Signature]*
 Entered.....

[Signature] T.F.L.S.
 9/5/2000
 Trinidad & Tobago, Land Surveyor

23 JAN 2001
Lands and
Surveys
Division